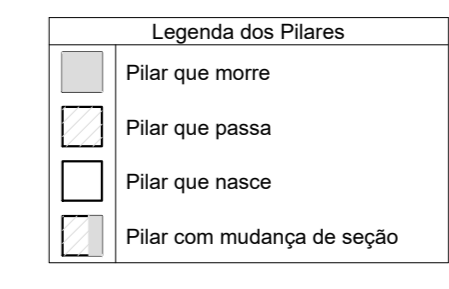


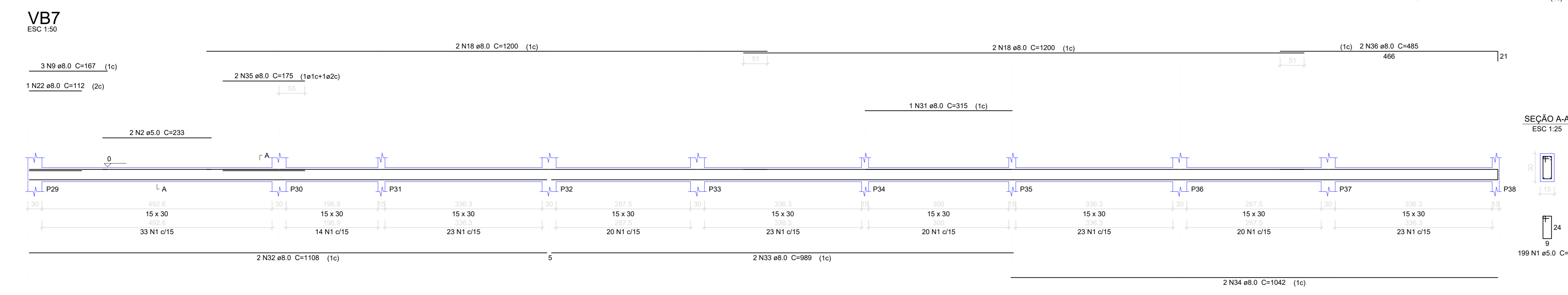
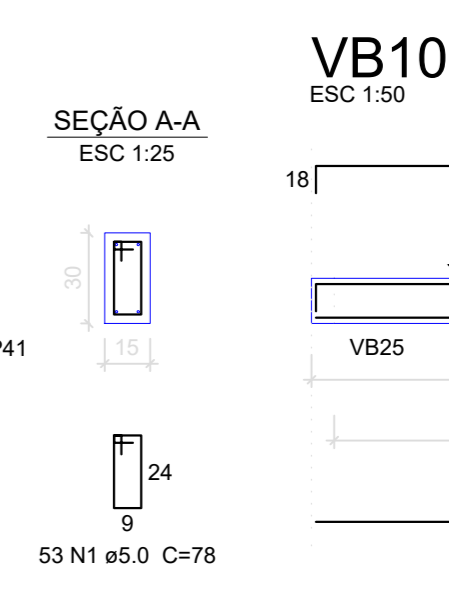
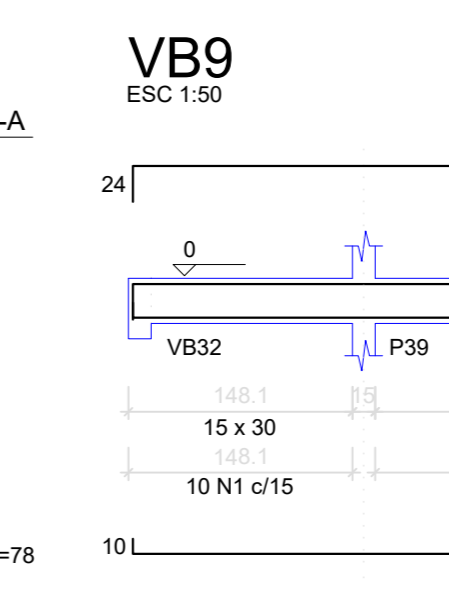
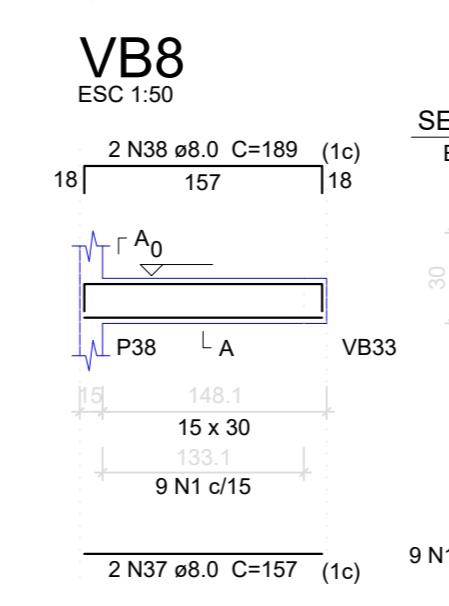
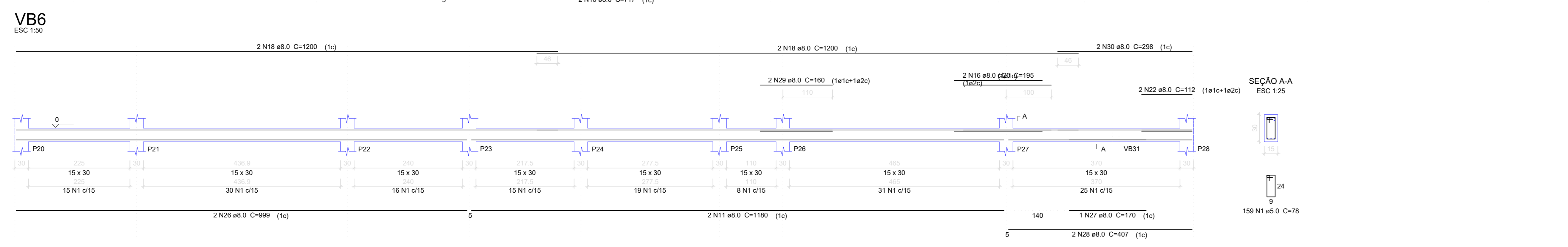
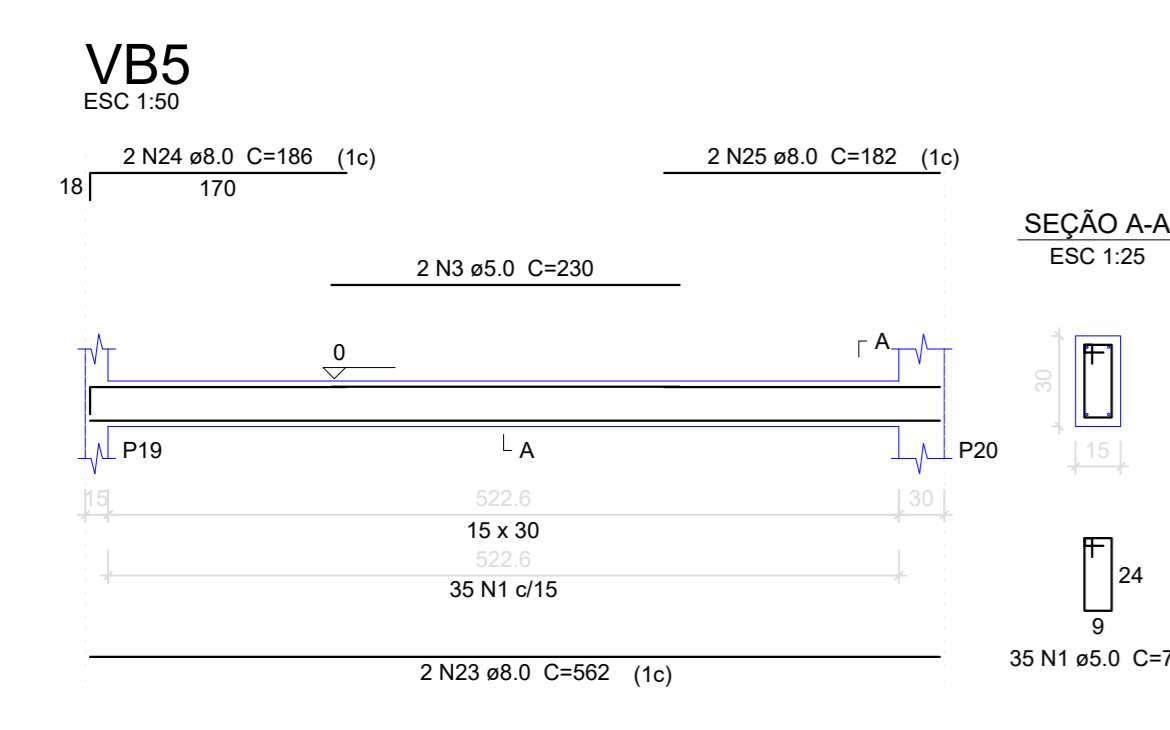
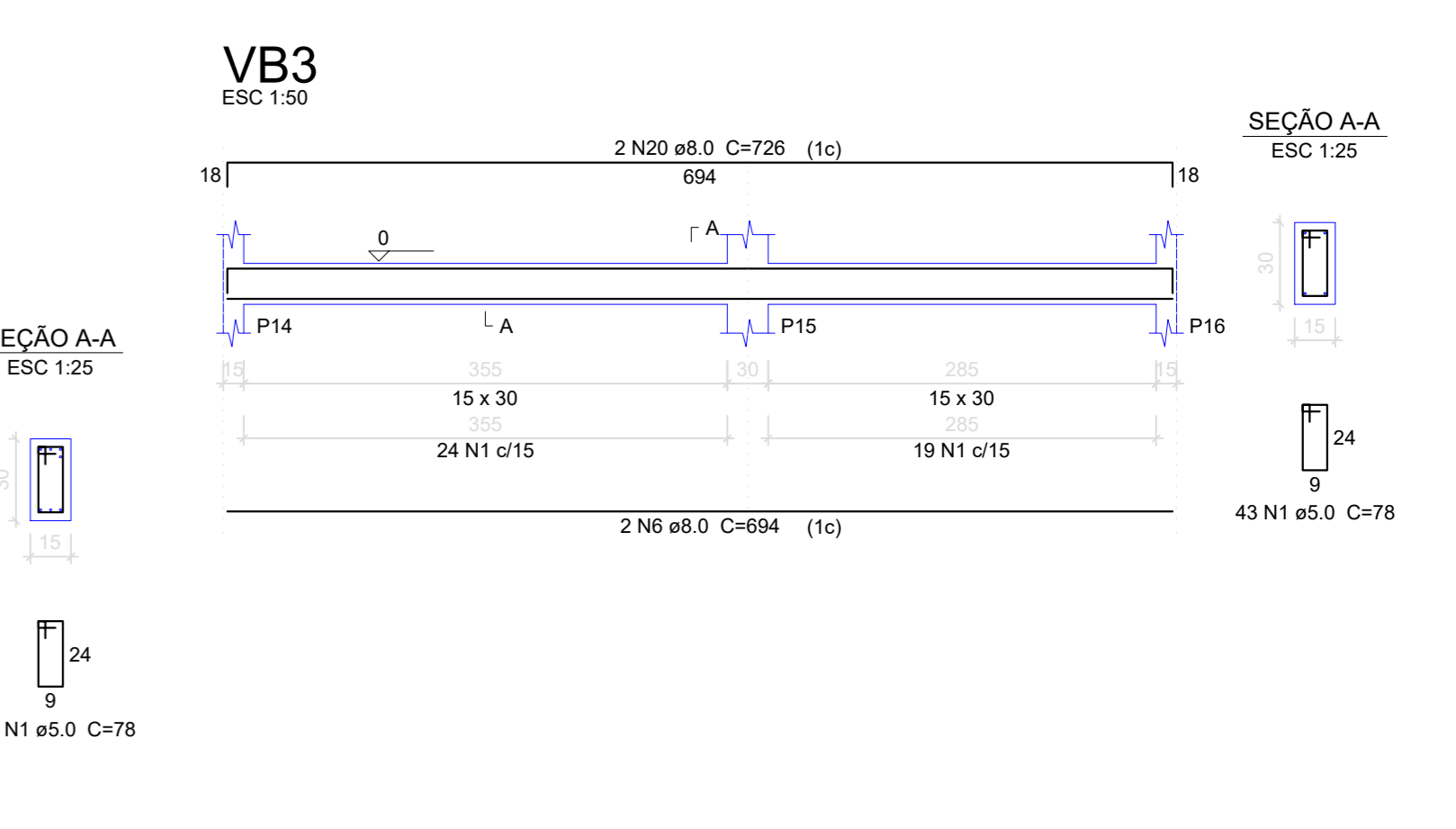
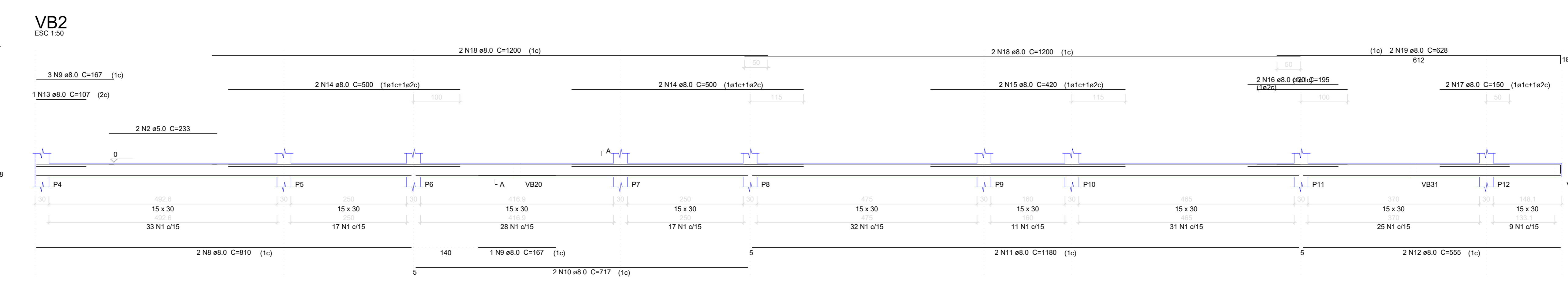
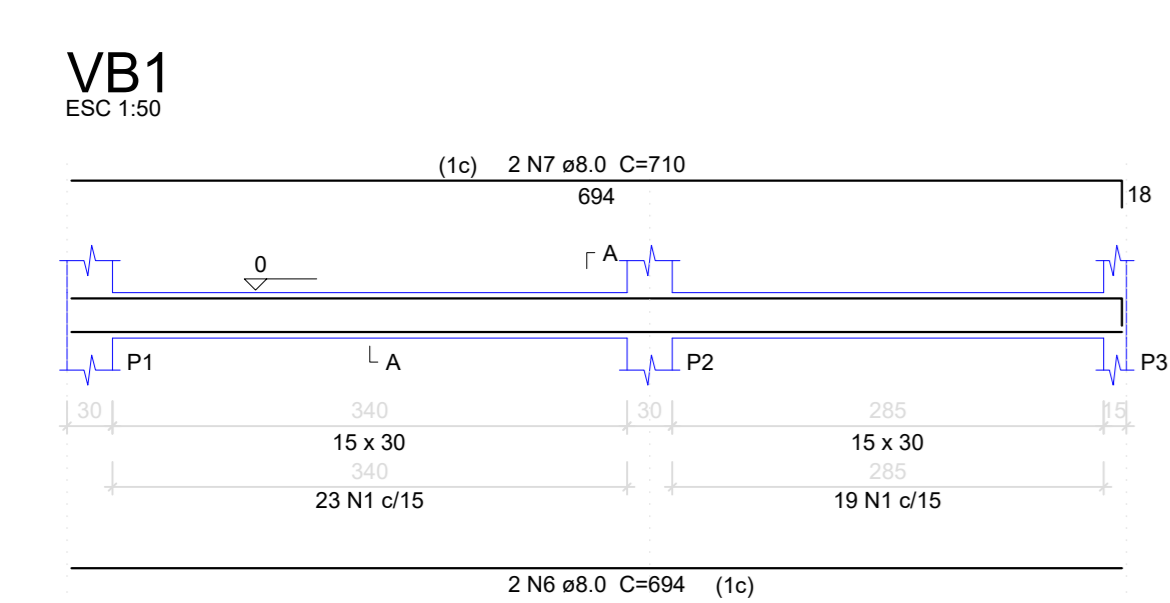
Vigas			
Nome	Seção (cm)	Eixo (cm)	Nível (cm)
VB1	15x30	0	0
VB2	15x30	0	0
VB3	15x30	0	0
VB4	15x30	0	0
VB5	15x30	0	0
VB6	15x30	0	0
VB7	15x30	0	0
VB8	15x30	0	0
VB9	15x30	0	0
VB10	15x30	0	0
VB11	15x30	0	0
VB12	15x30	0	0
VB13	15x30	0	0
VB14	15x30	0	0
VB15	15x30	0	0
VB16	15x30	0	0
VB17	15x30	0	0
VB18	15x30	0	0
VB19	15x30	0	0
VB20	15x30	0	0
VB21	15x30	0	0
VB22	15x30	0	0
VB23	15x30	0	0
VB24	15x30	0	0
VB25	15x30	0	0
VB26	15x30	0	0
VB27	15x30	0	0
VB28	15x30	0	0
VB29	15x30	0	0
VB30	15x30	0	0
VB31	15x30	0	0
VB32	15x40	0	0
VB33	15x30	0	0
VB34	15x30	0	0
VB35	15x30	0	0
VB36	15x30	0	0
VB37	15x30	0	0
VB38	15x30	0	0
VB39	15x30	0	0

Pilares			
Nome	Seção (cm)	Eixo (cm)	Nível (cm)
P1	15x30	0	0
P2	15x30	0	0
P3	15x30	0	0
P4	15x30	0	0
P5	15x30	0	0
P6	15x30	0	0
P7	15x30	0	0
P8	15x30	0	0
P9	15x30	0	0
P10	15x30	0	0
P11	15x30	0	0
P12	15x30	0	0
P13	15x30	0	0
P14	15x30	0	0
P15	15x30	0	0
P16	15x30	0	0
P17	15x30	0	0
P18	15x30	0	0
P19	15x30	0	0
P20	15x30	0	0
P21	15x30	0	0
P22	15x30	0	0
P23	15x30	0	0
P24	15x30	0	0
P25	15x30	0	0
P26	15x30	0	0
P27	15x30	0	0
P28	15x30	0	0
P29	15x30	0	0
P30	15x30	0	0
P31	15x30	0	0
P32	15x30	0	0
P33	15x30	0	0
P34	15x30	0	0
P35	15x30	0	0
P36	15x30	0	0
P37	15x30	0	0
P38	15x30	0	0
P39	15x30	0	0
P40	15x30	0	0
P41	15x30	0	0
P42	15x30	0	0
P43	15x30	0	0
P44	15x30	0	0
P45	15x30	0	0
P46	15x30	0	0
P47	15x30	0	0
P48	15x30	0	0
P49	15x30	0	0
P50	15x30	0	0
P51	15x30	0	0
P52	15x30	0	0
P53	15x30	0	0
P54	15x30	0	0

Características dos materiais		
Nome	Valor	Unidade
Esq	15	(kg/cm ³)
Esq	200716	(kg/cm ²)
Esq	300	(kg/cm ²)



Forma do pavimento BALDRAME escala 1:50



PREFEITURA MUNICIPAL DE GOVERNADOR LINDENBERG

PROJETO DE CONSTRUÇÃO DO CENTRO DE CONVIVÊNCIA

ESTRUTURAL

NOVEMBRO de 2023

PLANTA DE FORMA NÍVEL BALDRAME, DETALHAMENTO DAS VIGAS BALDRAMES

ÁREA TOTAL COM AMPLIAÇÃO: 390,95 m²

ESCALA: Indicação

ASSINADO: LEONARDO FINCO

RESP. TÉCNICO: JOSÉ CARLOS FIORINI FIOROT CREA-ES 604628/D

PROJETO: 01/08

PREFEITURA MUNICIPAL DE GOVERNADOR LINDENBERG CNPJ-04.217.786/0001-54