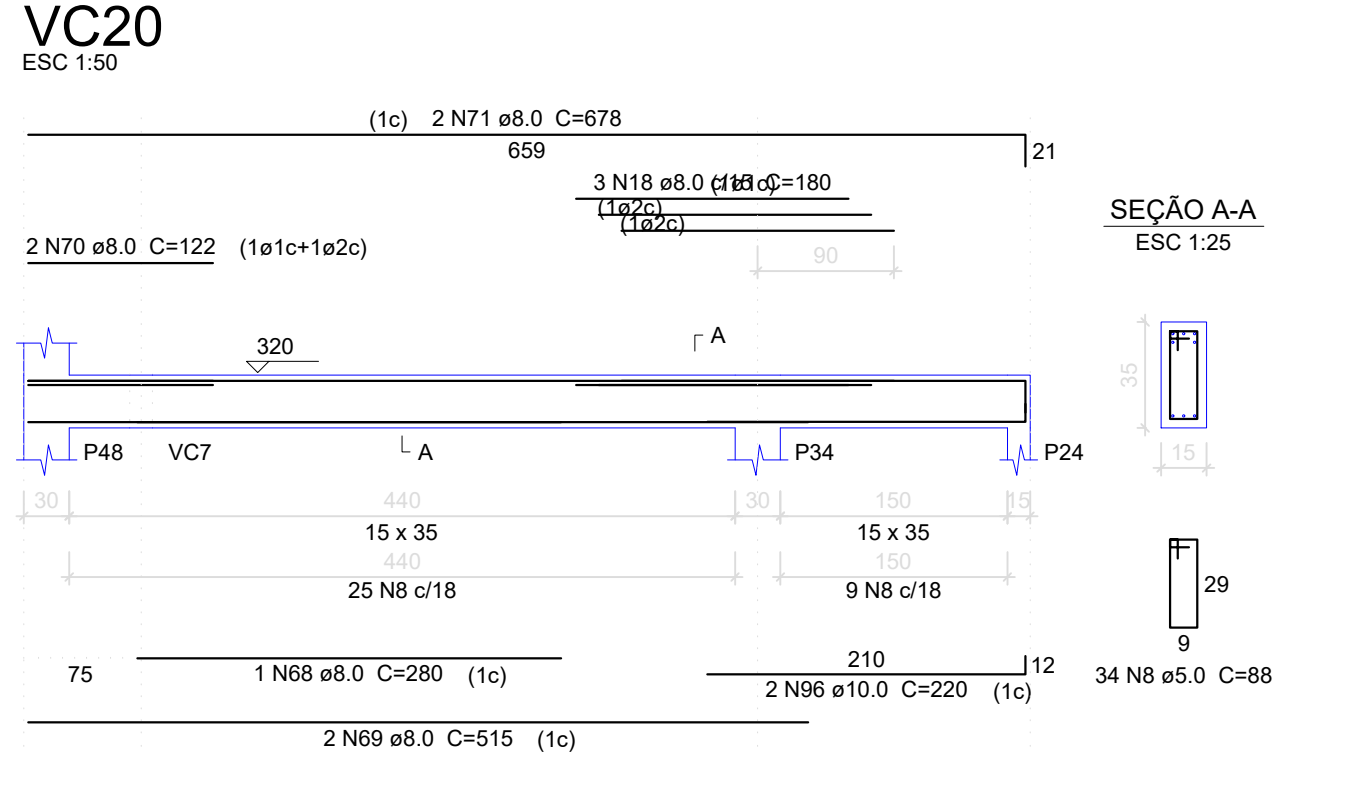
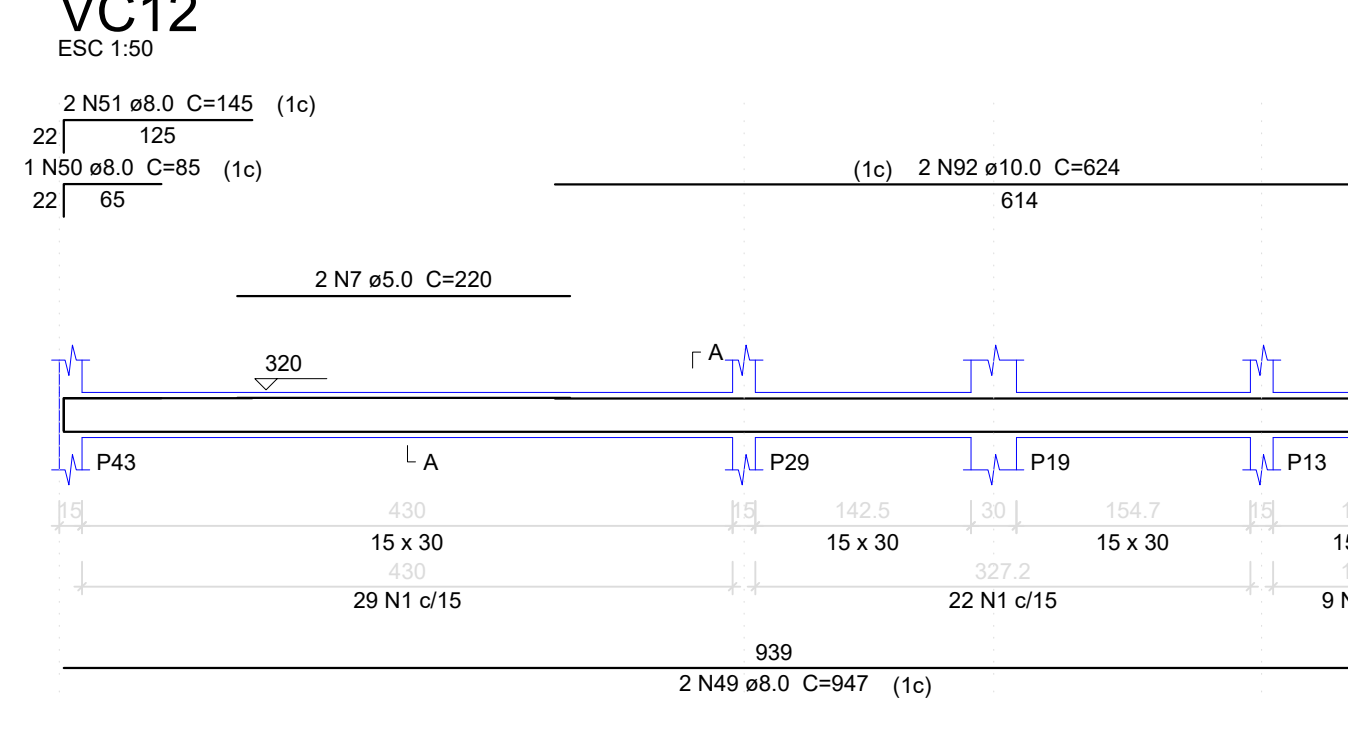
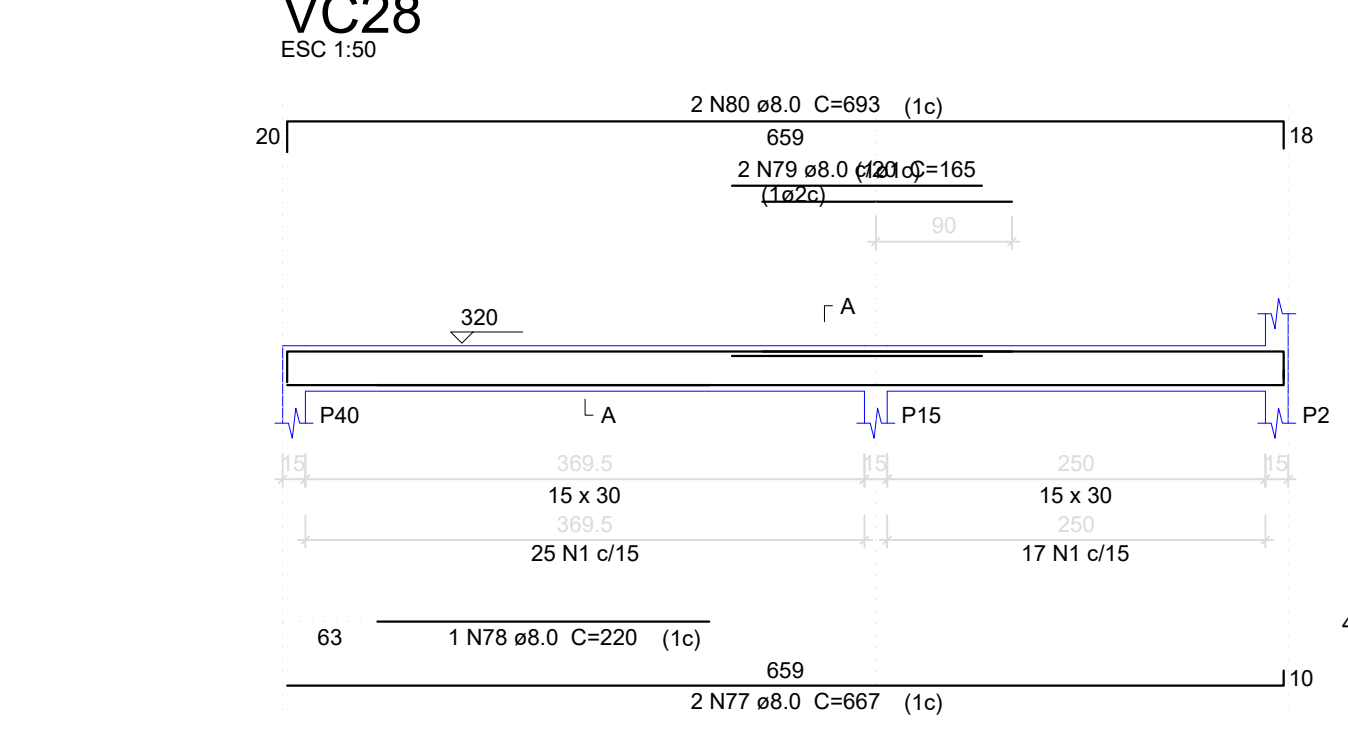
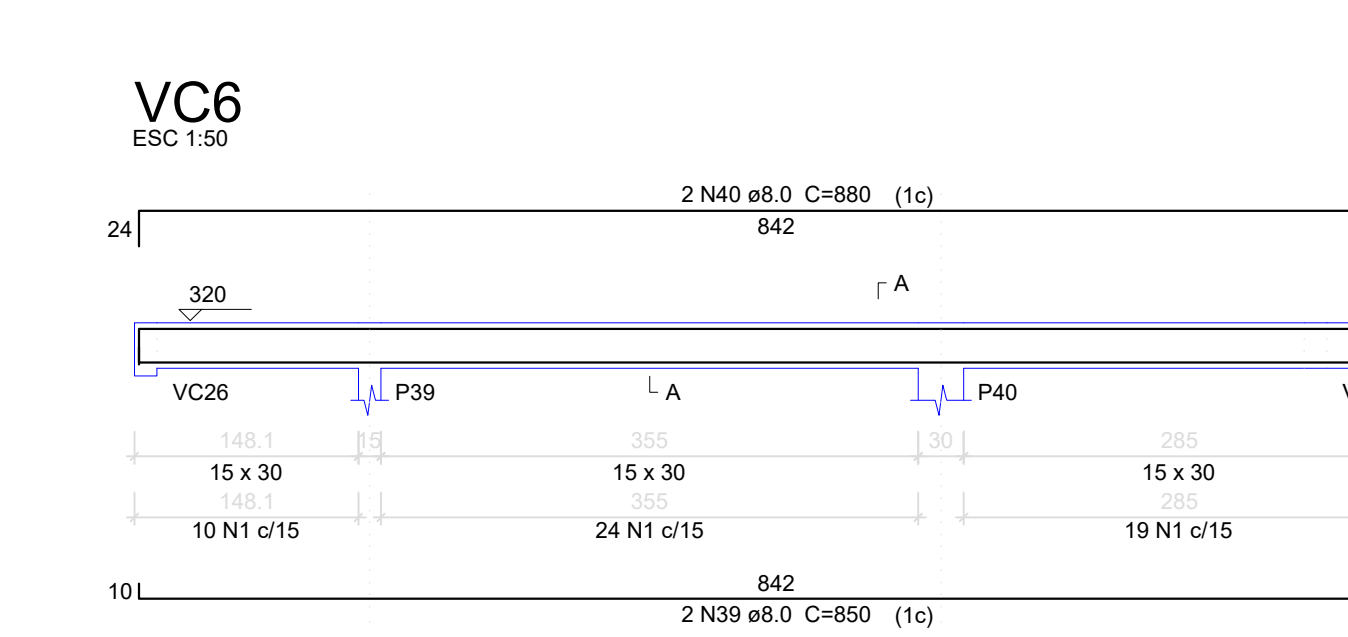
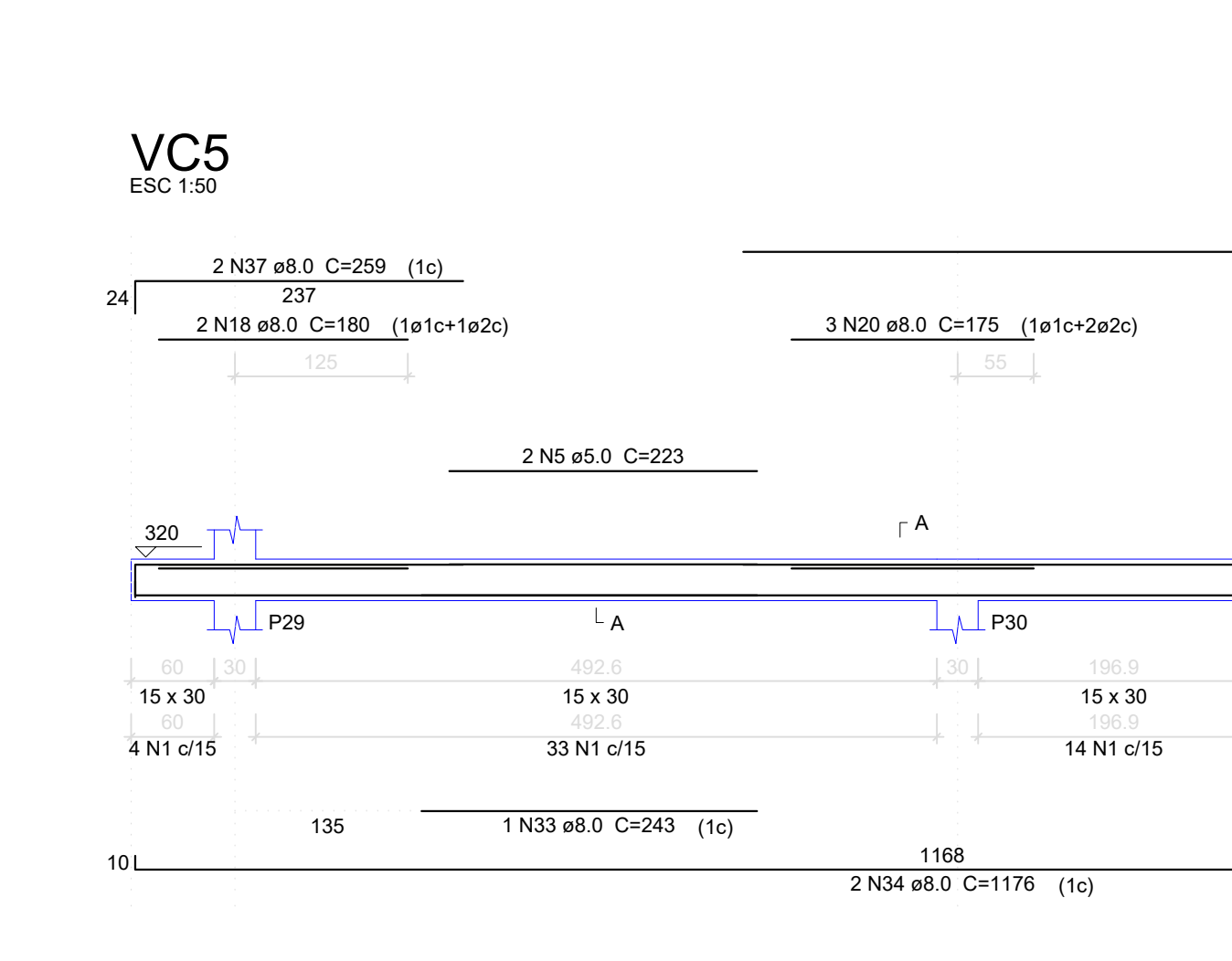
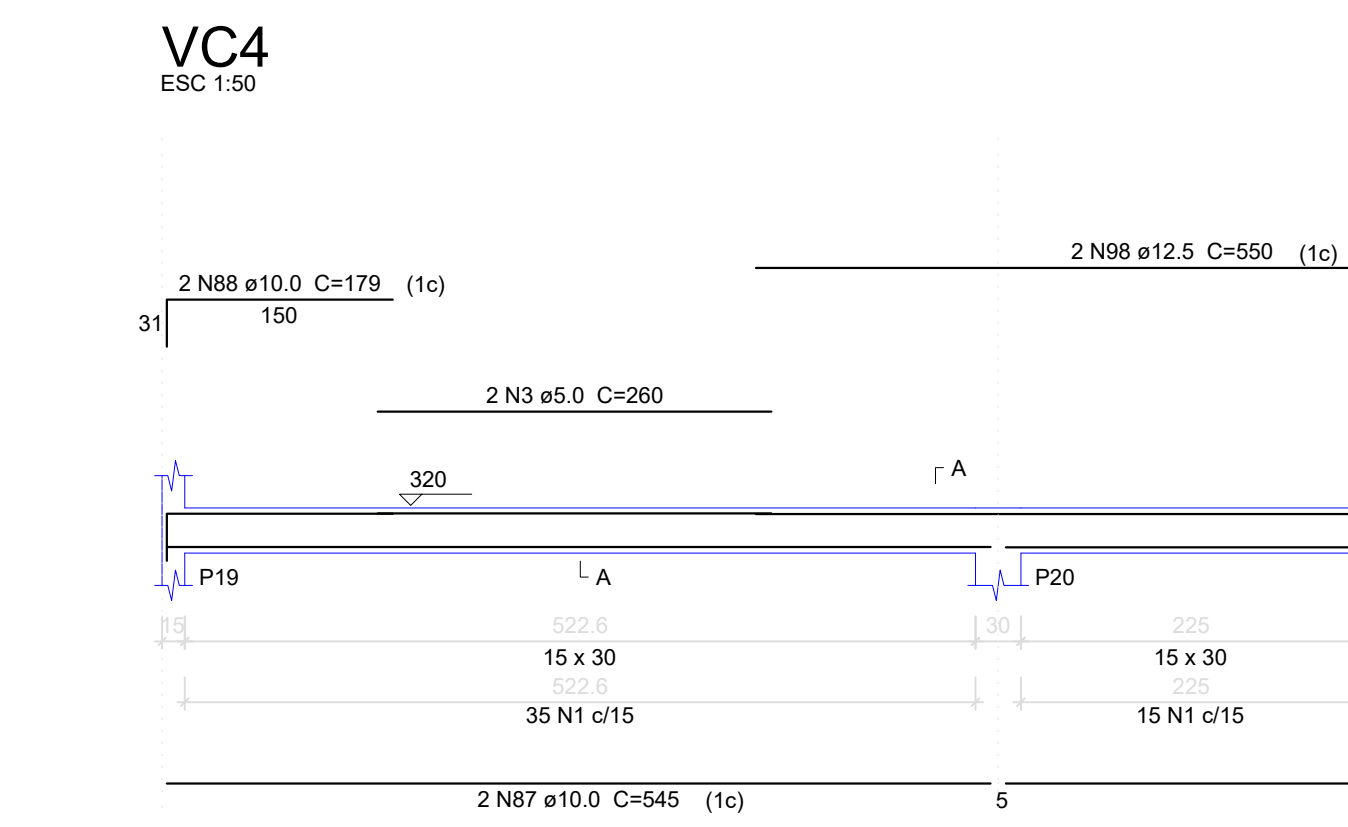
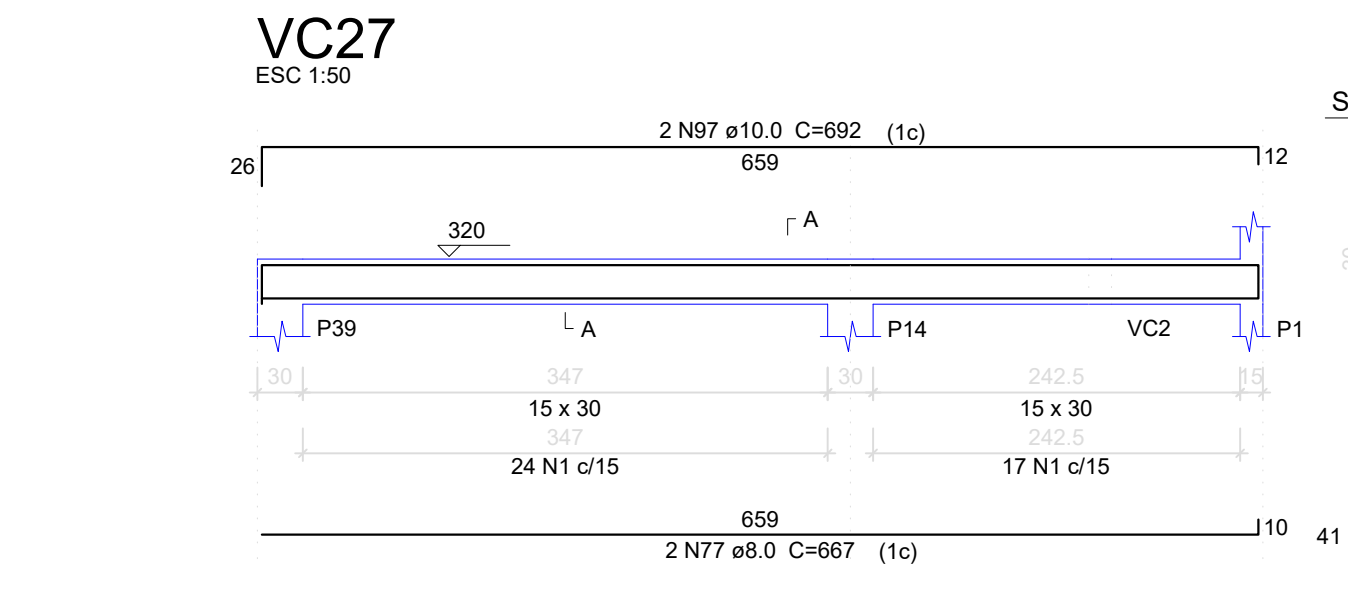
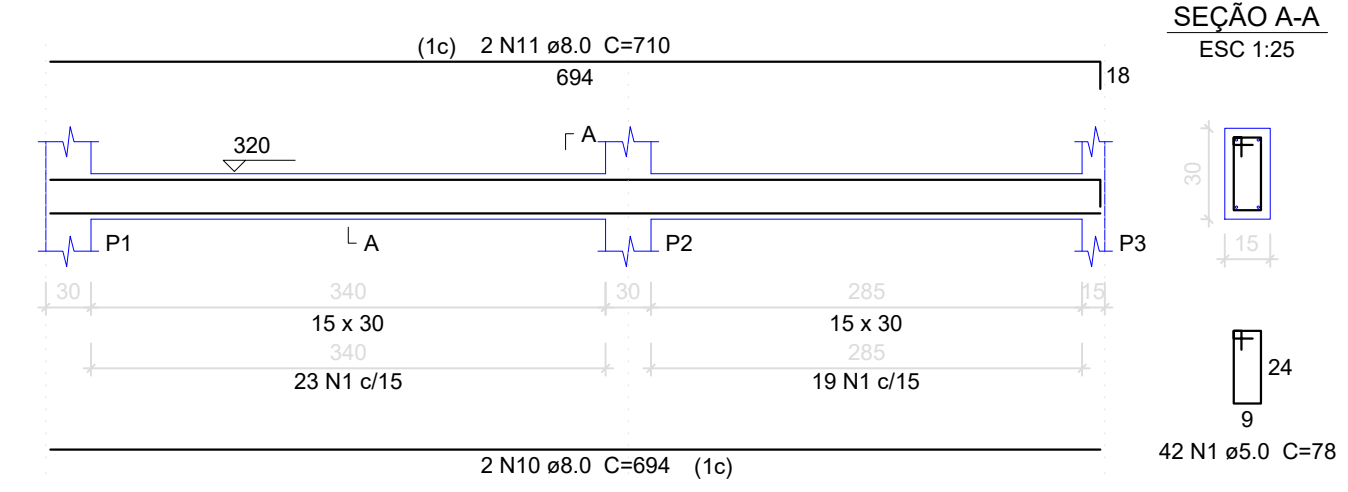
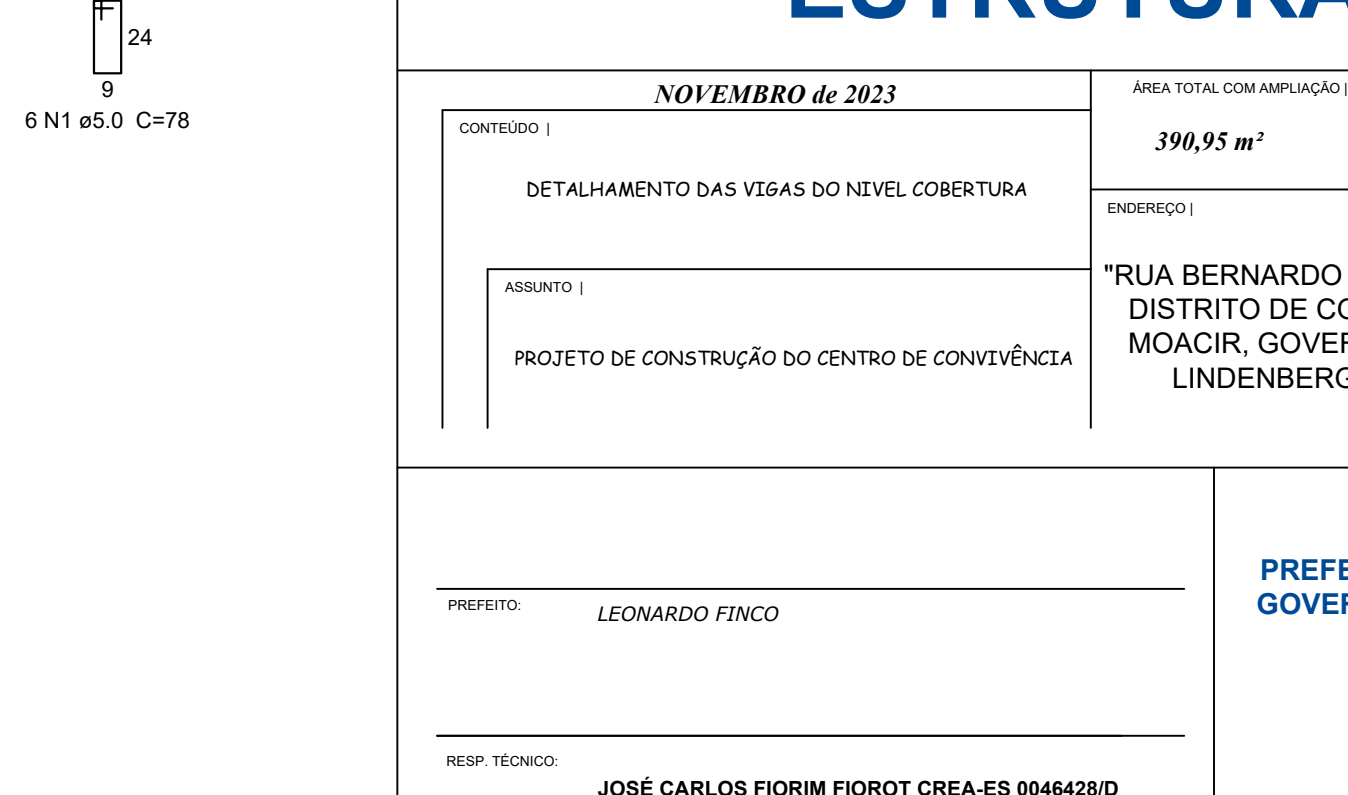
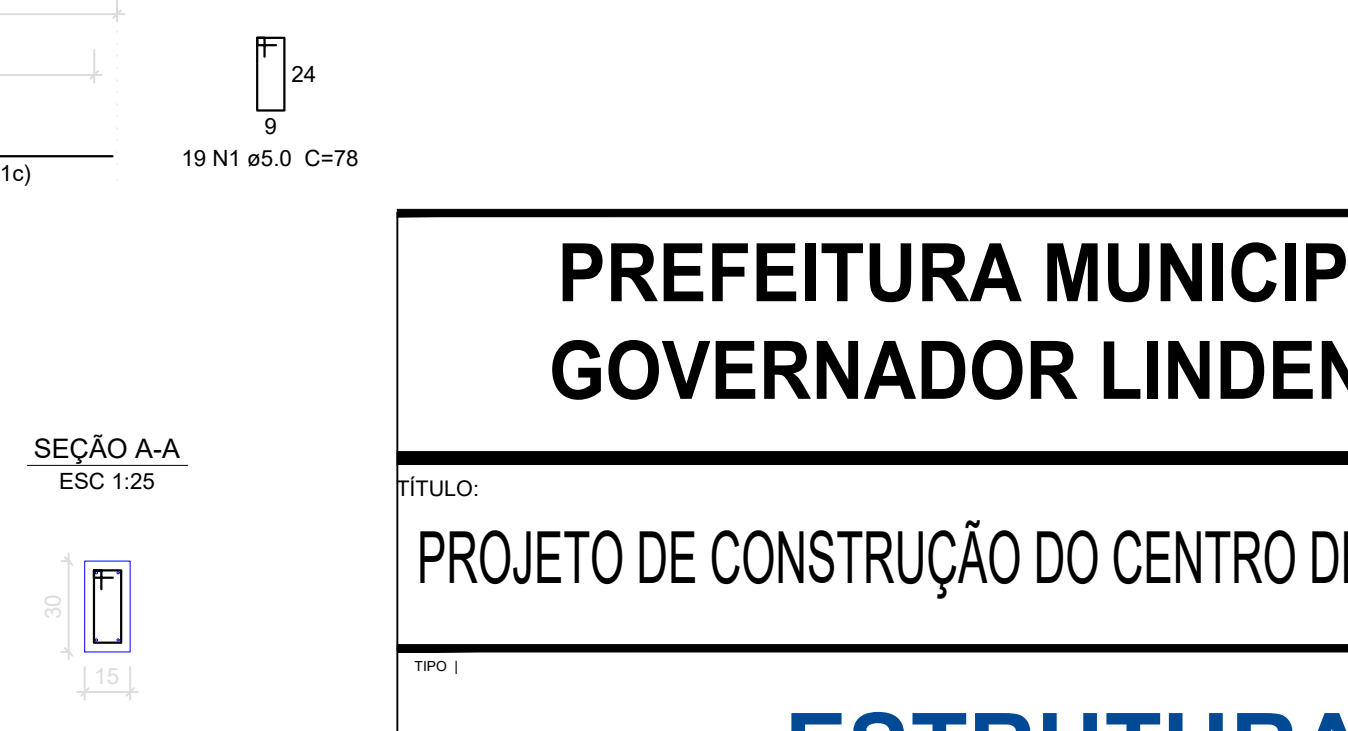
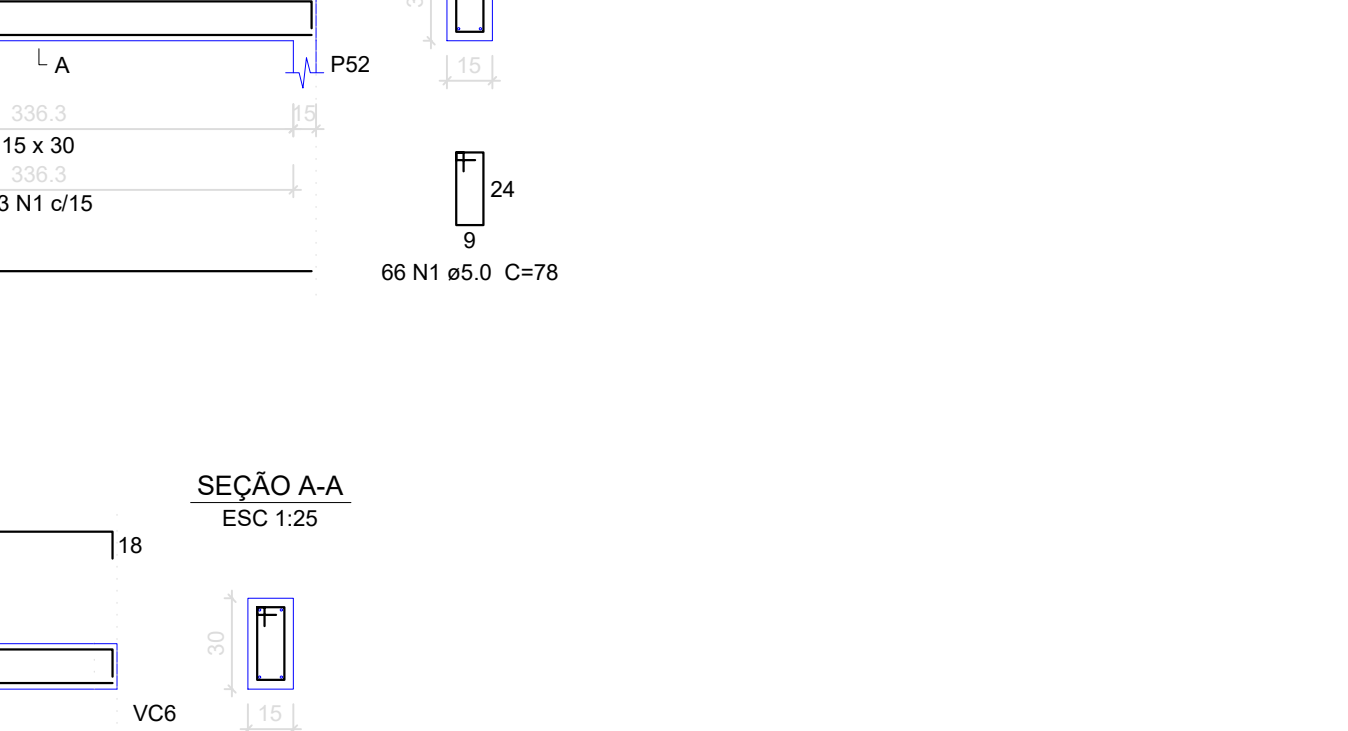
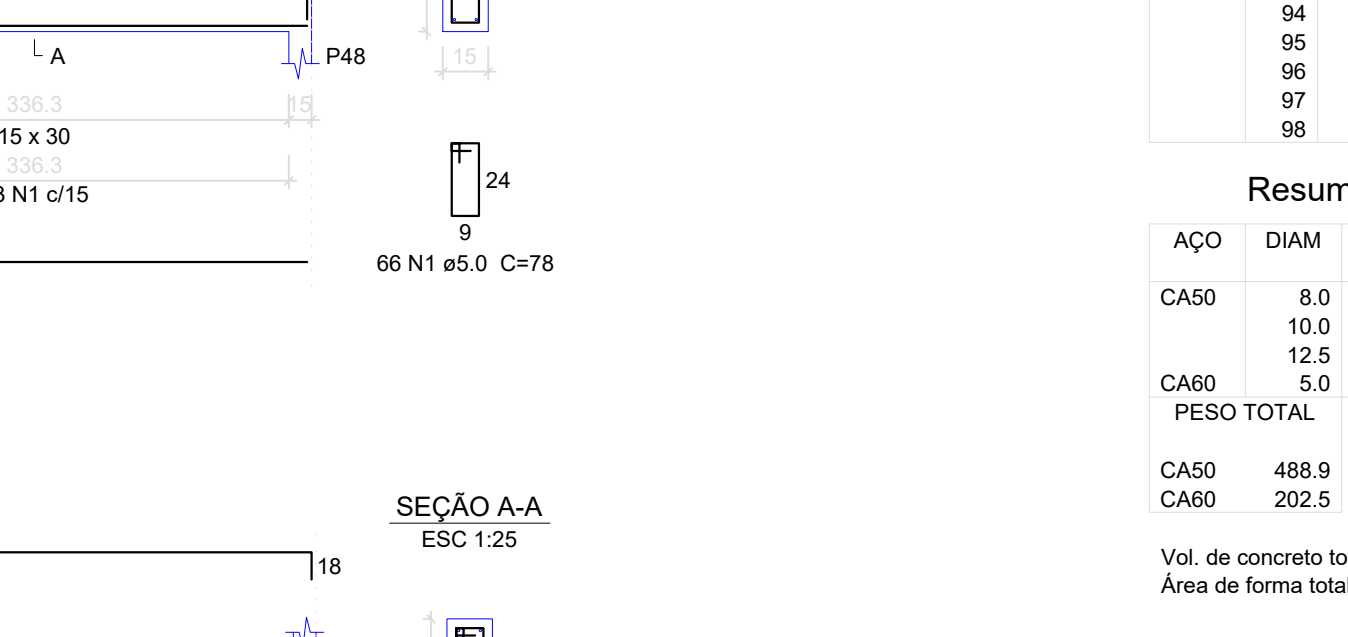
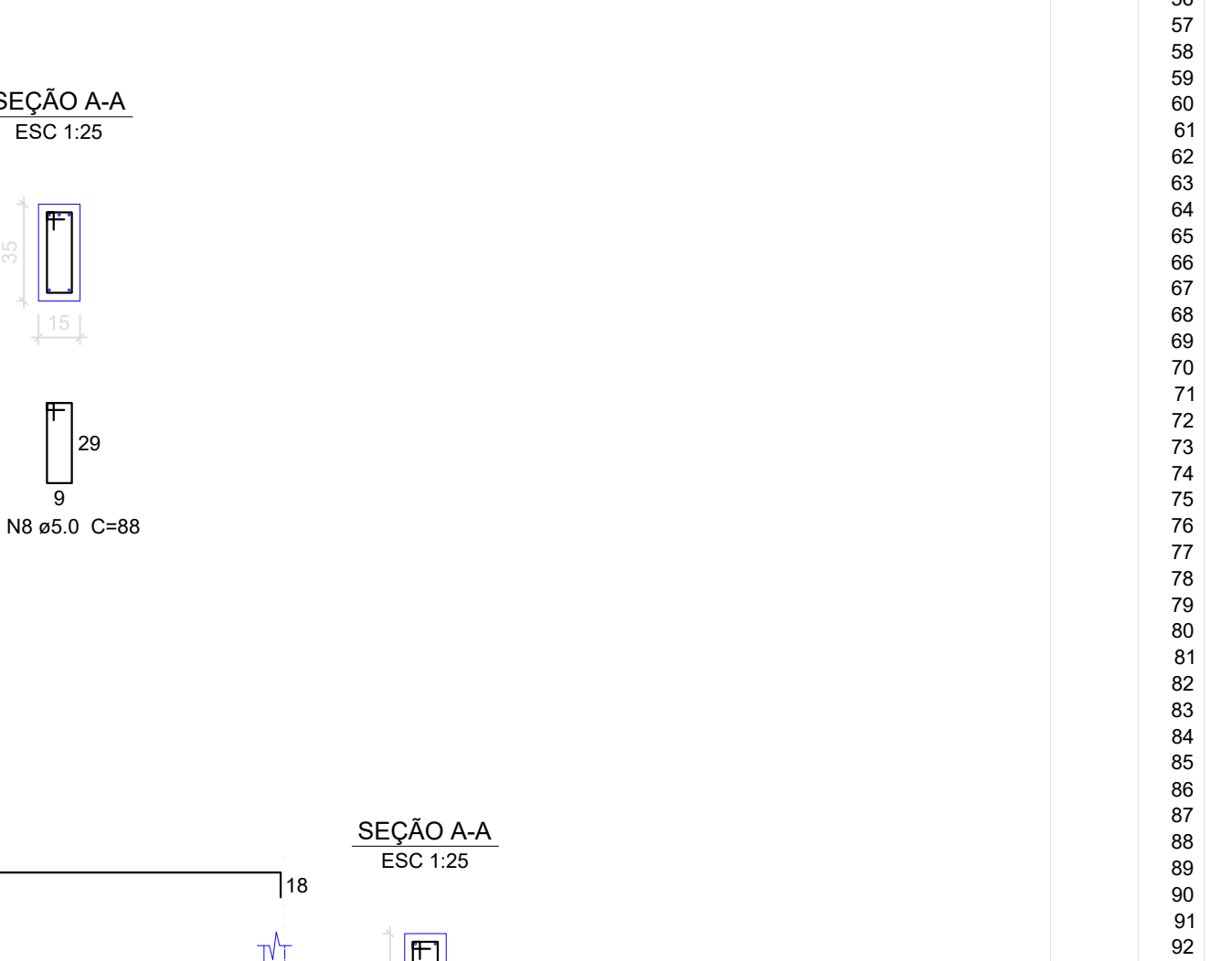
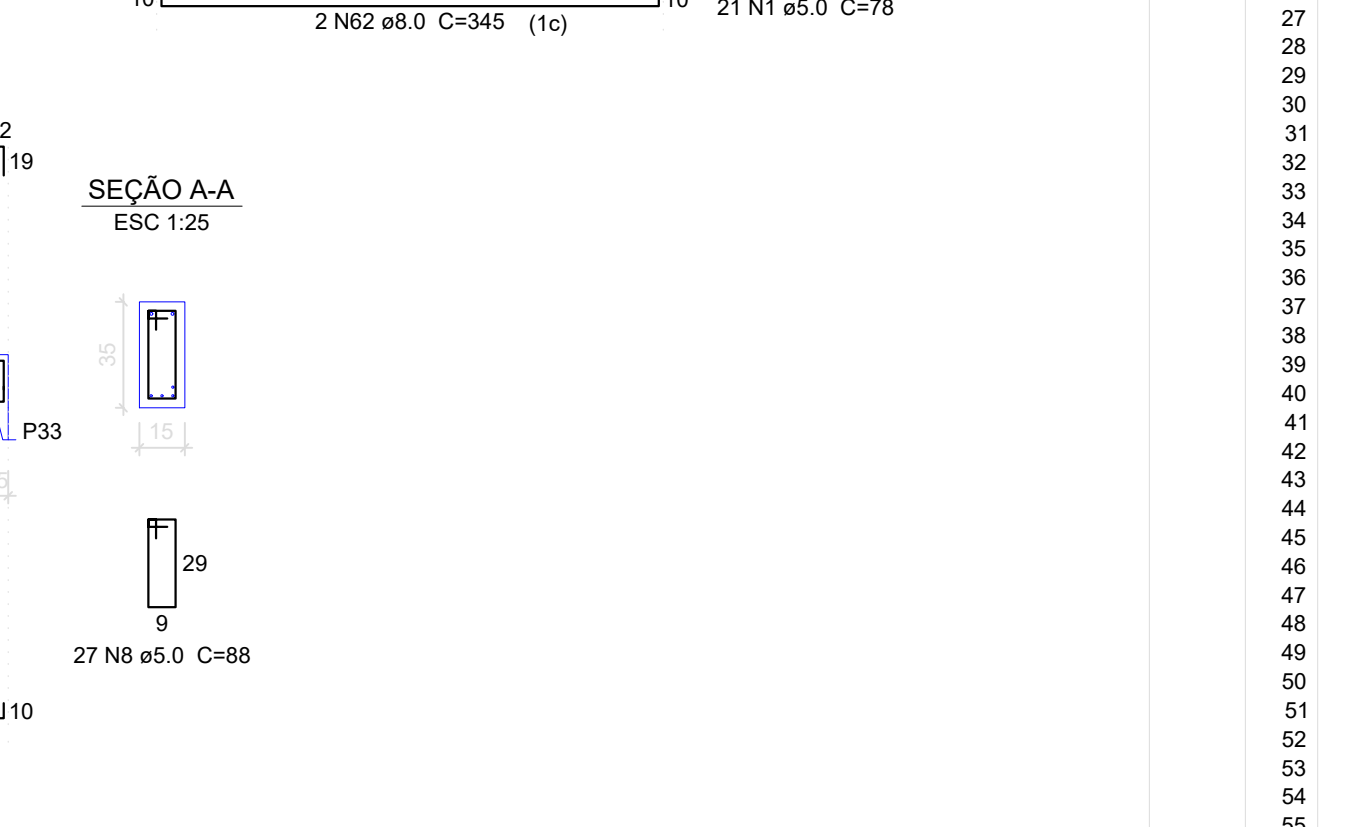
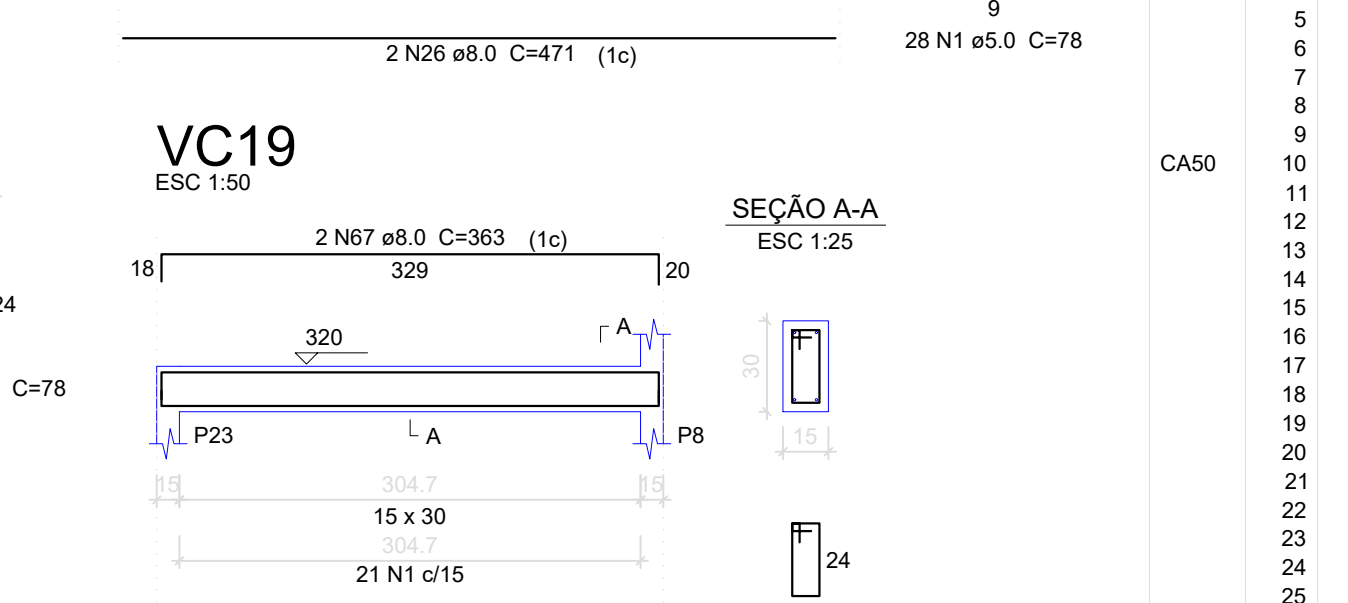
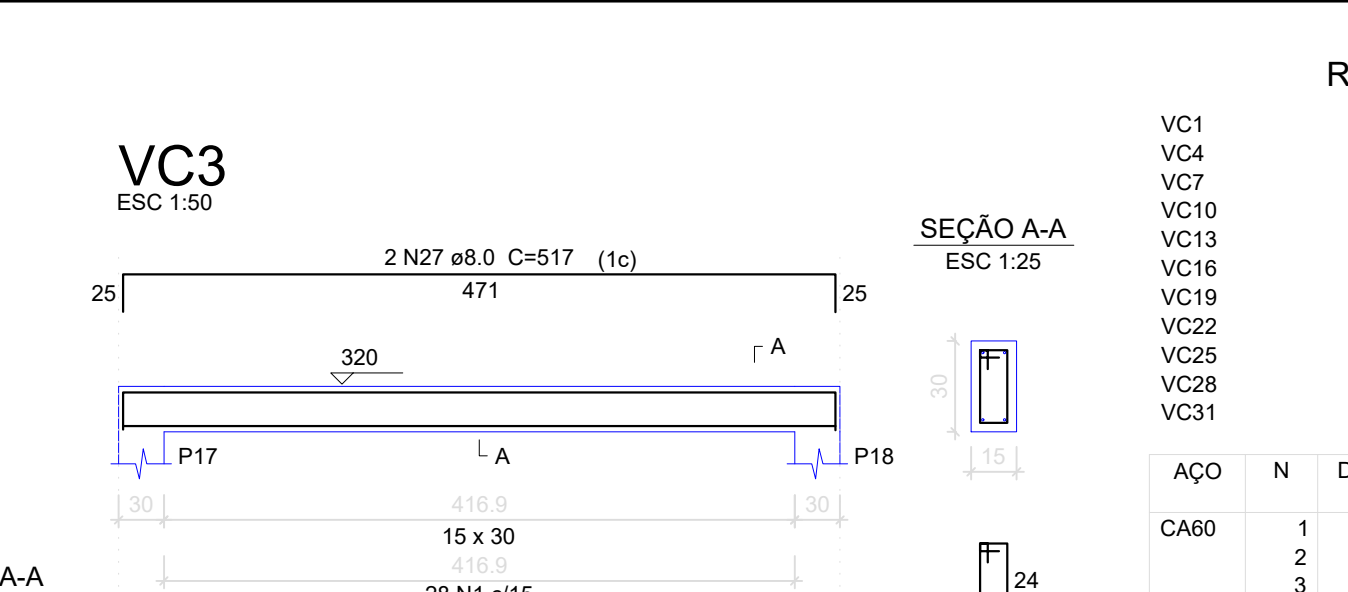
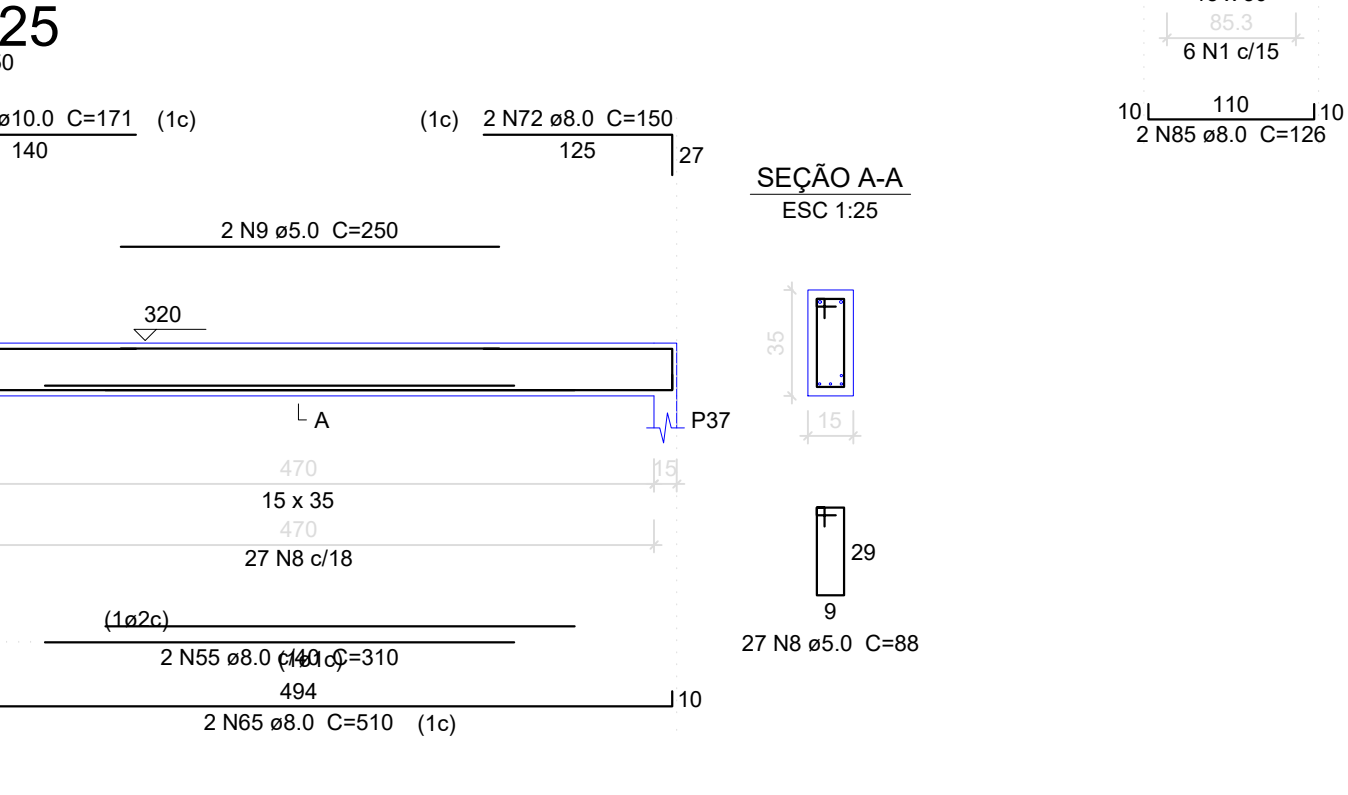
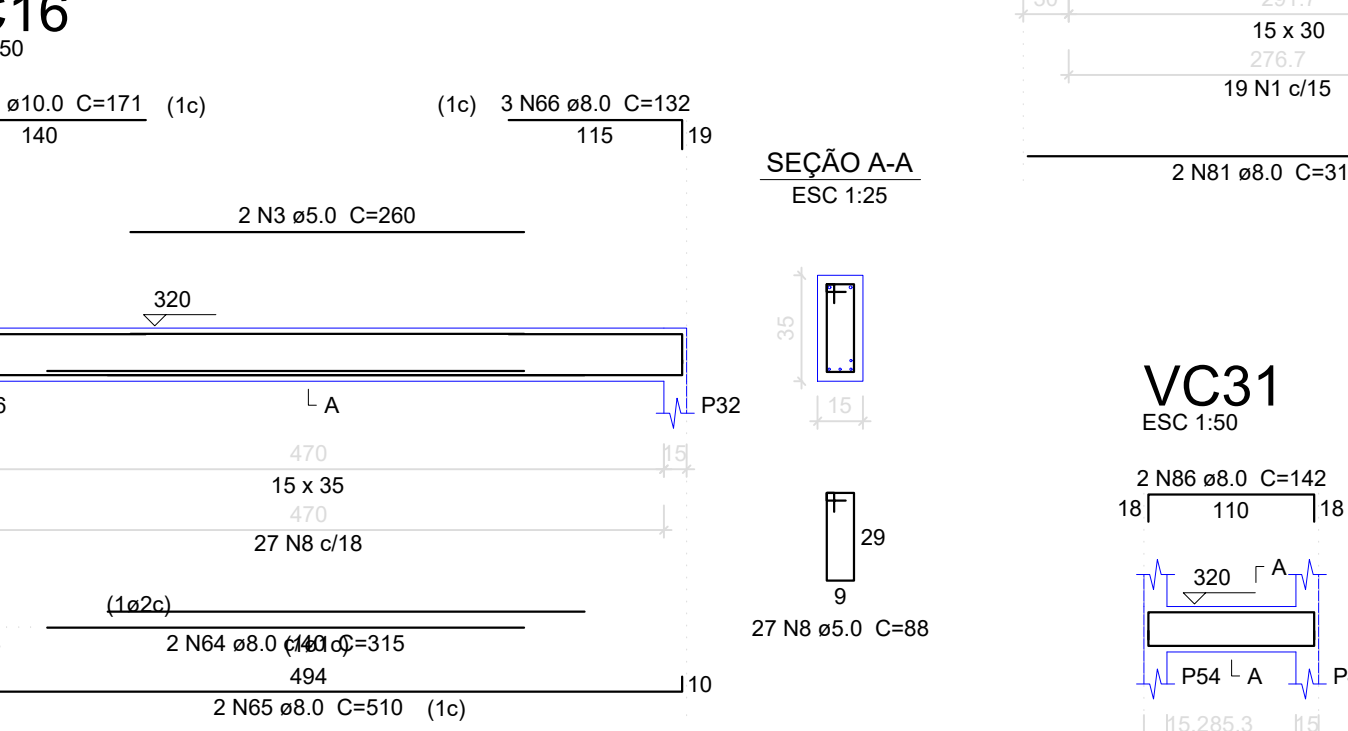
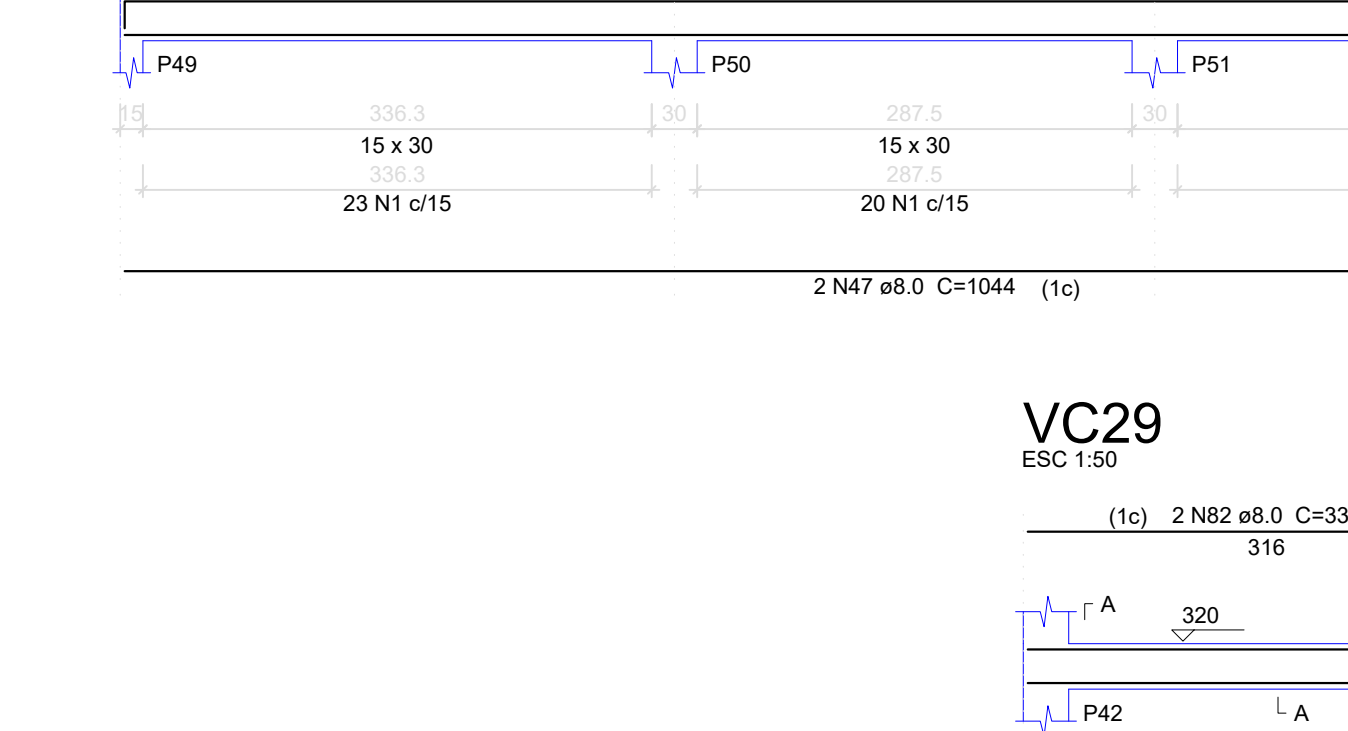
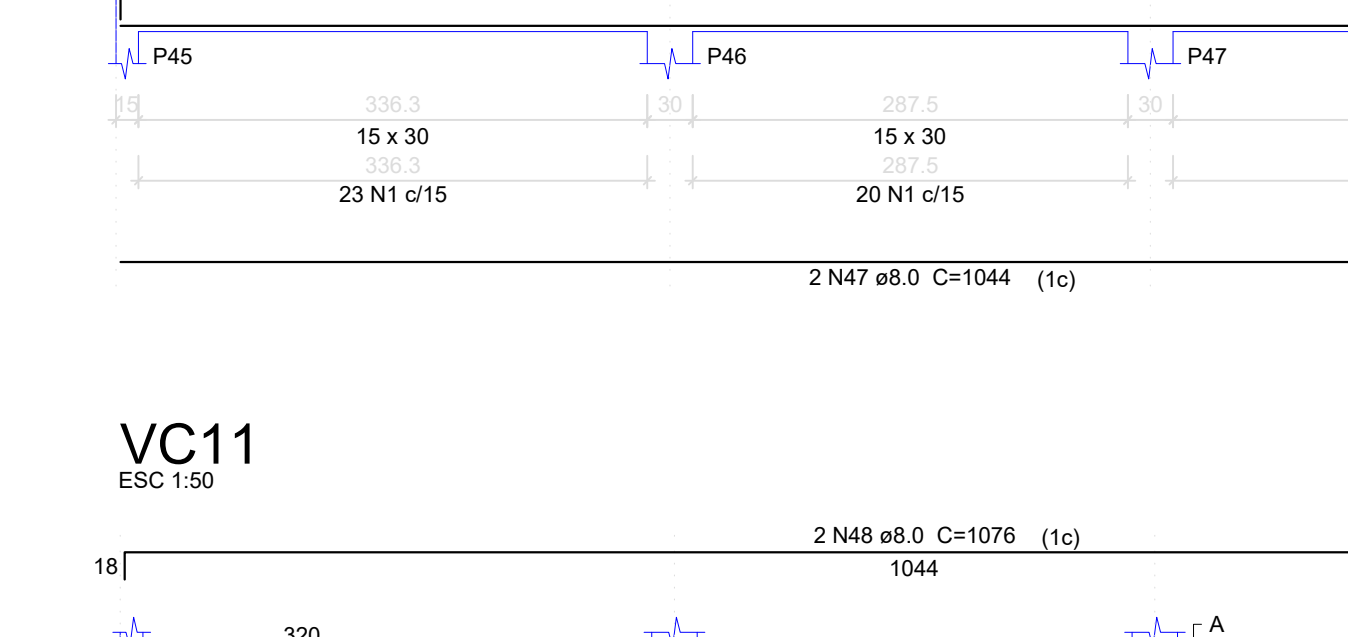
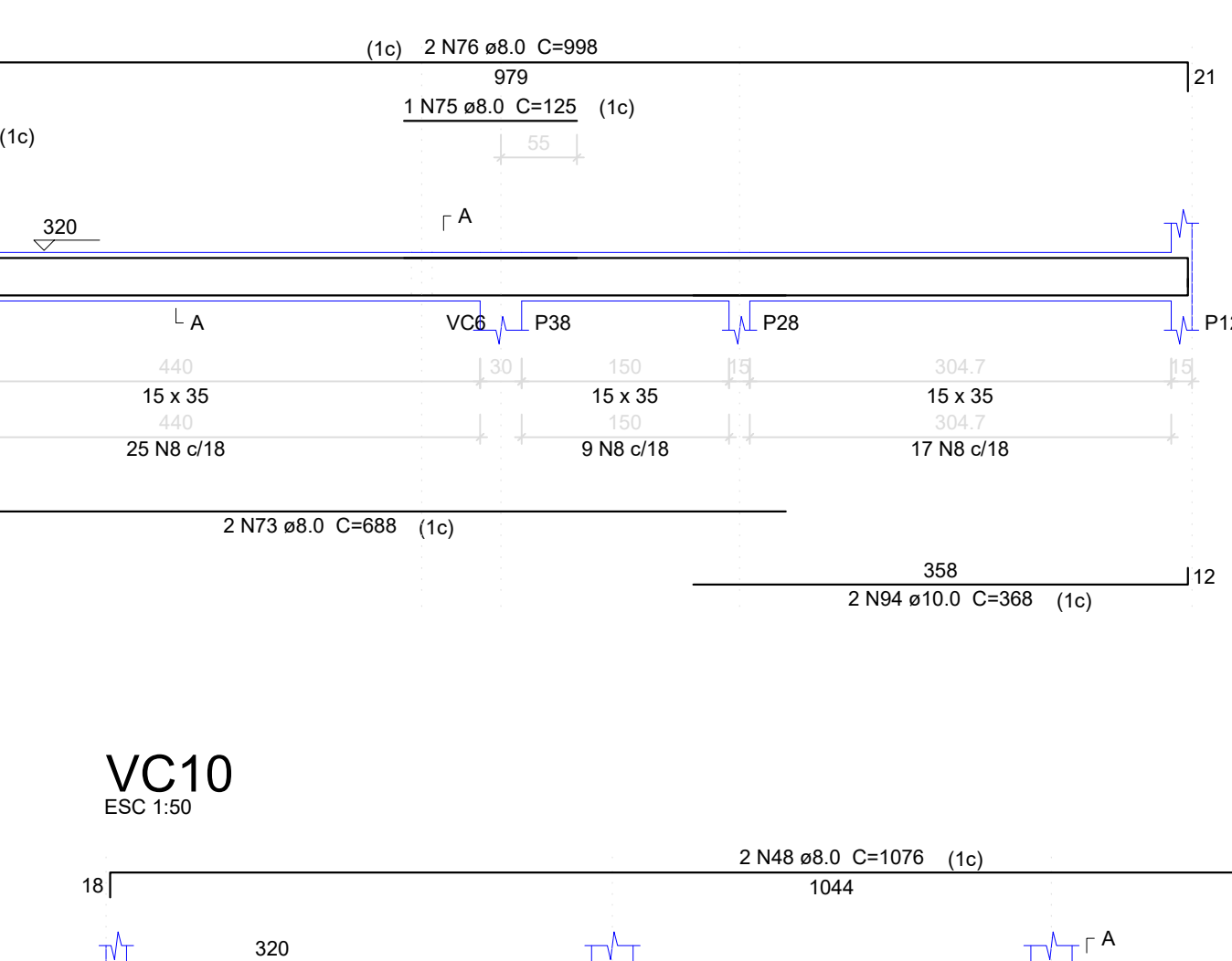
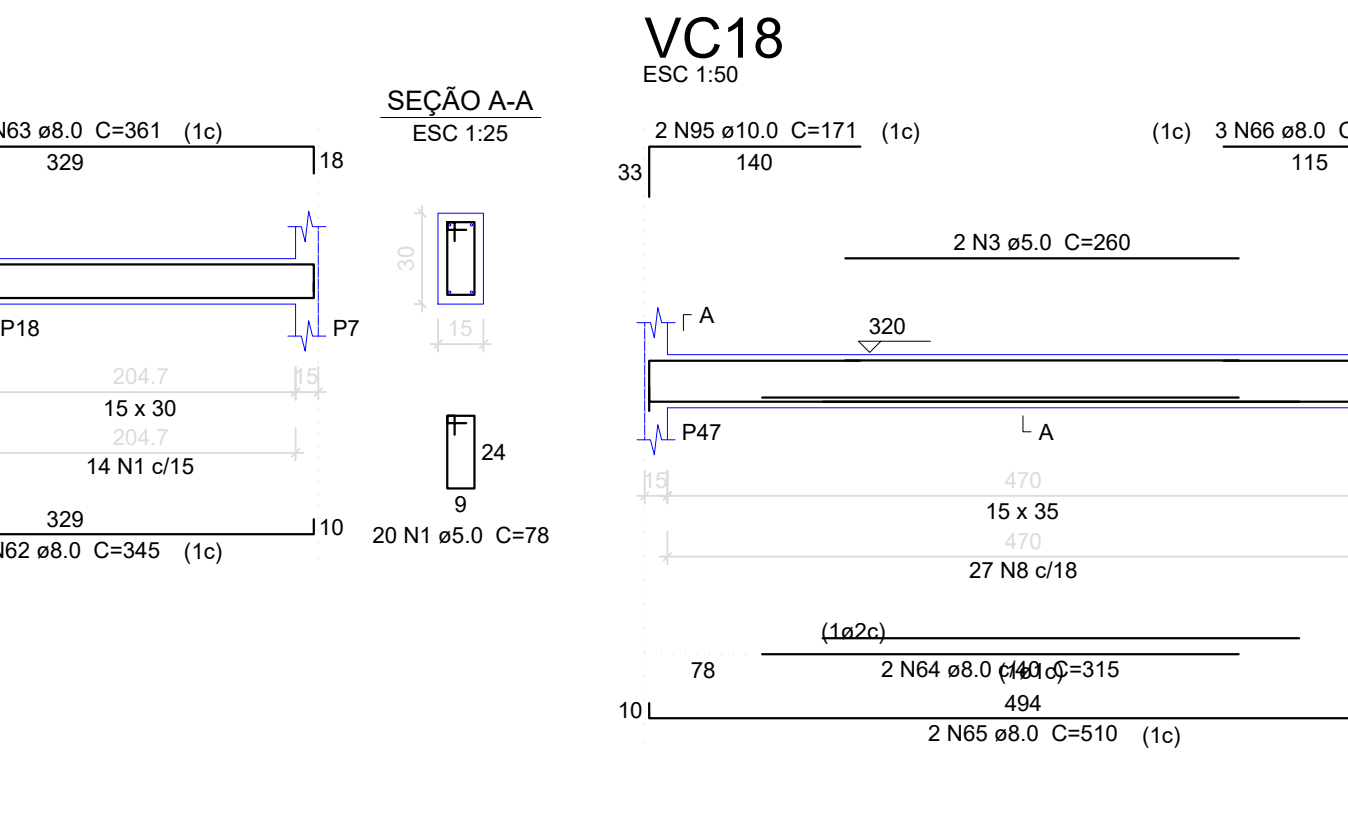
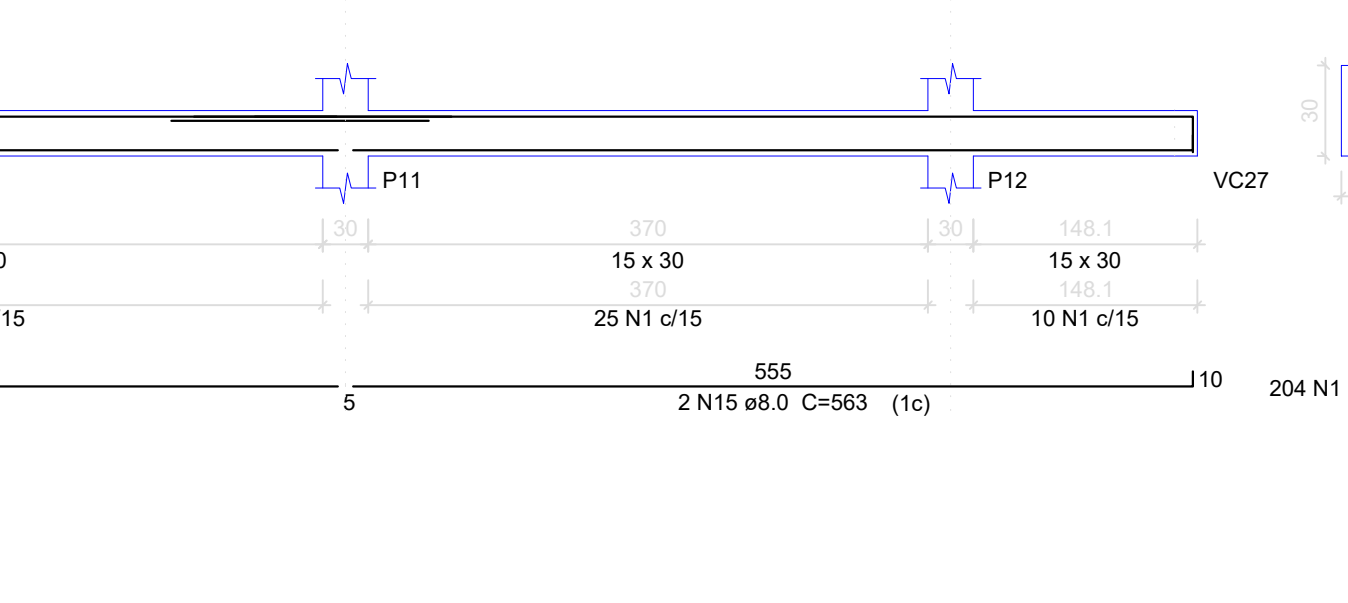
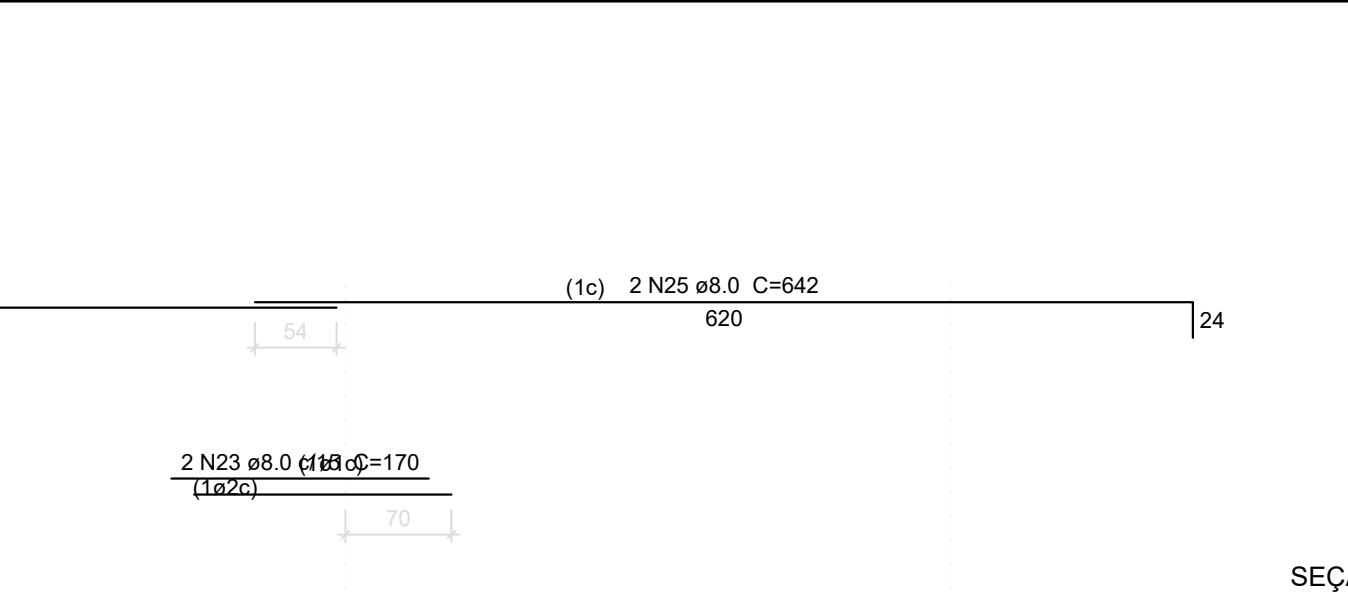
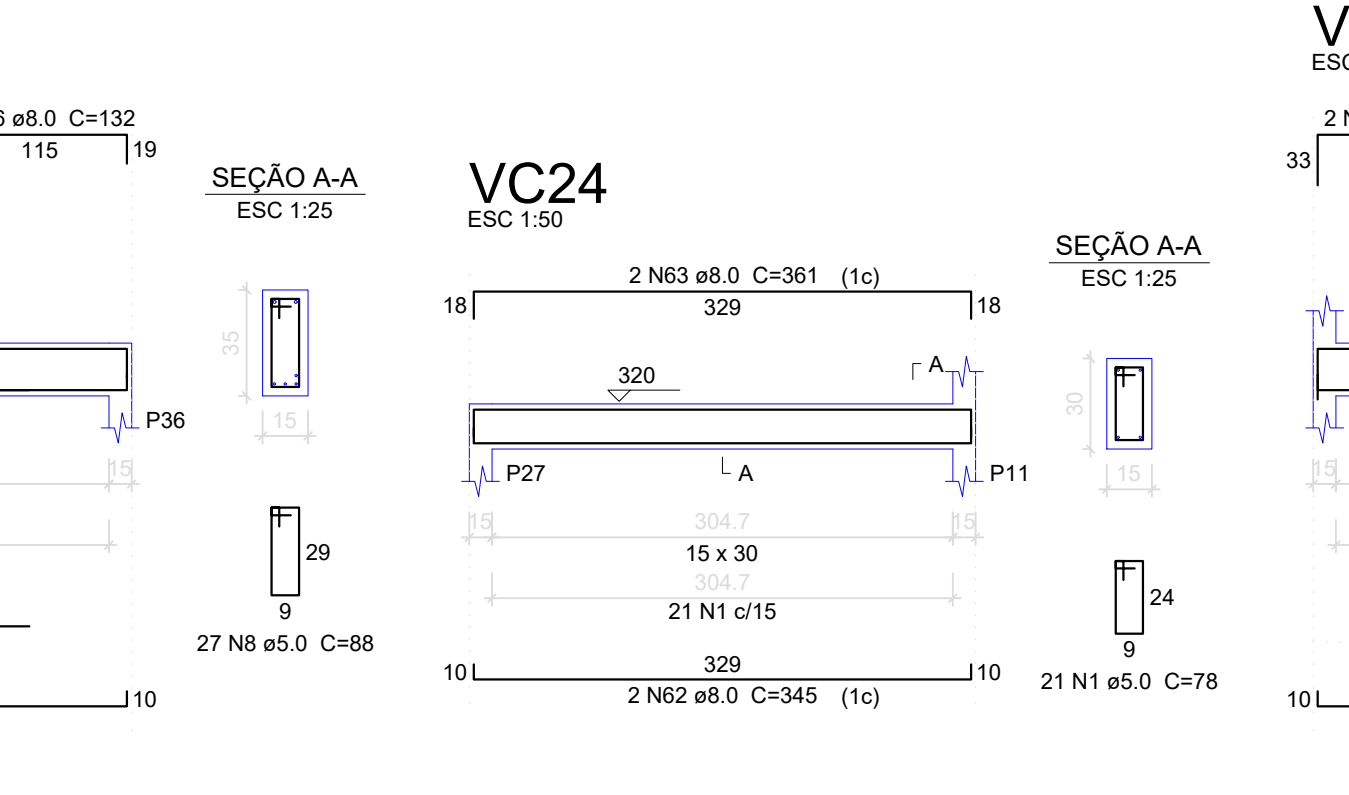
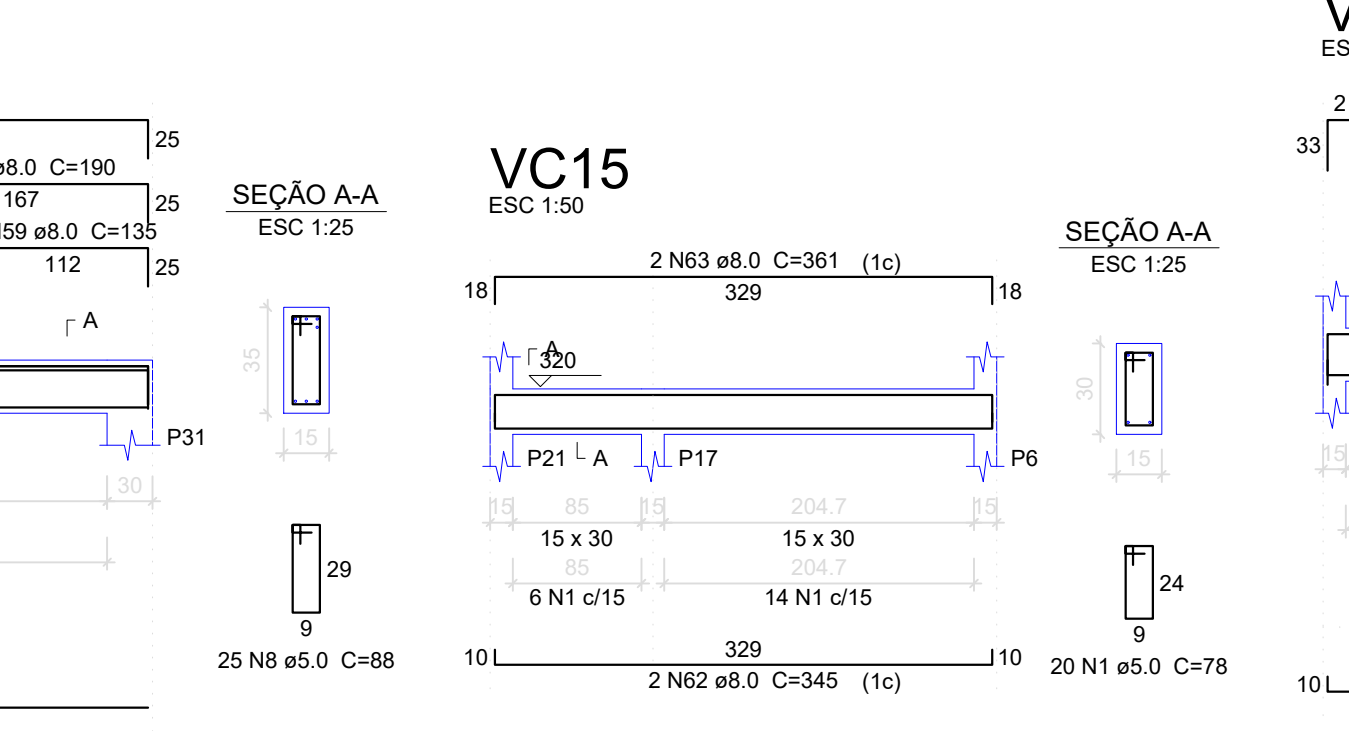
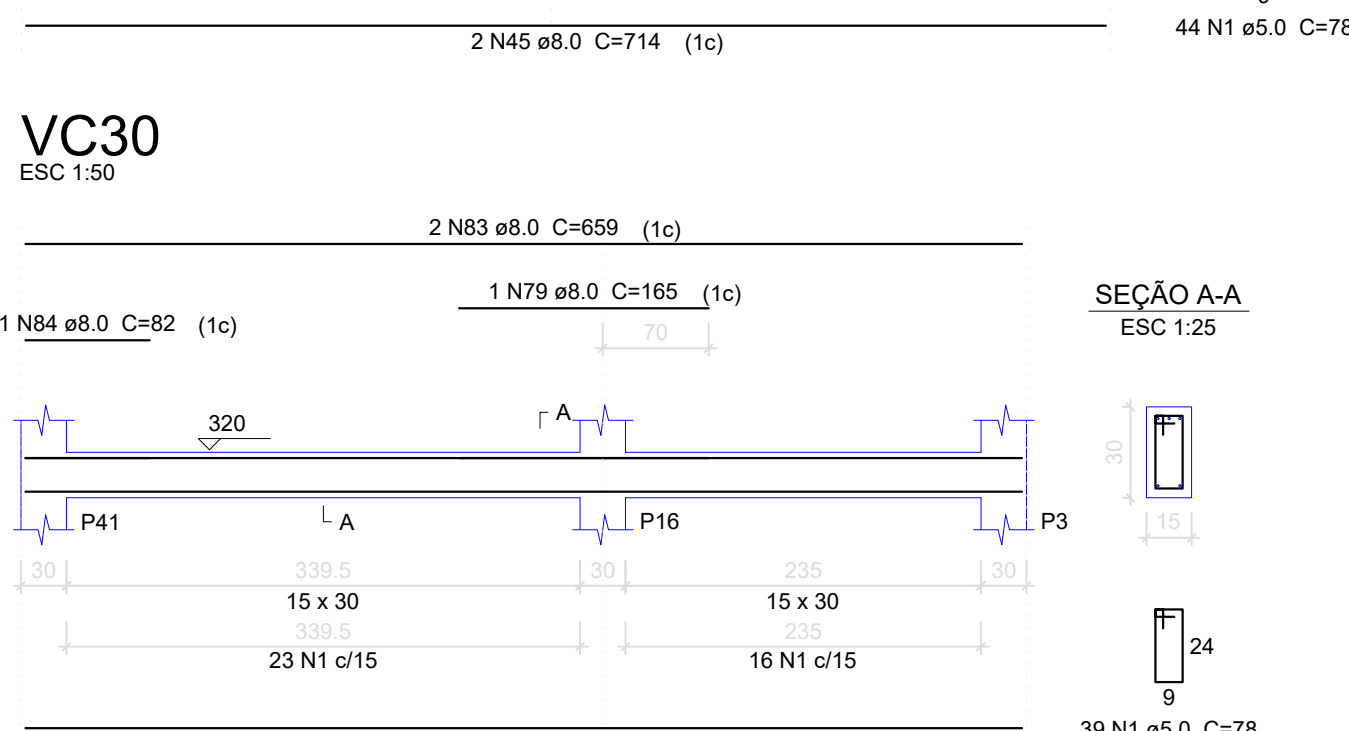
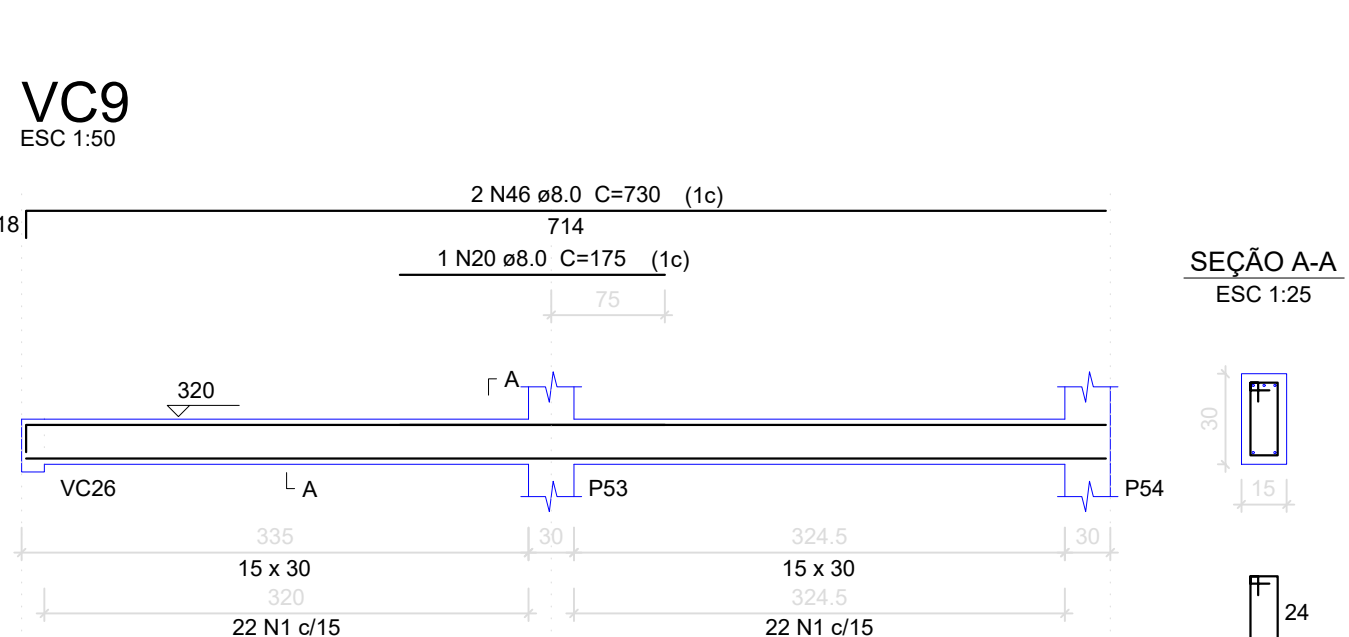
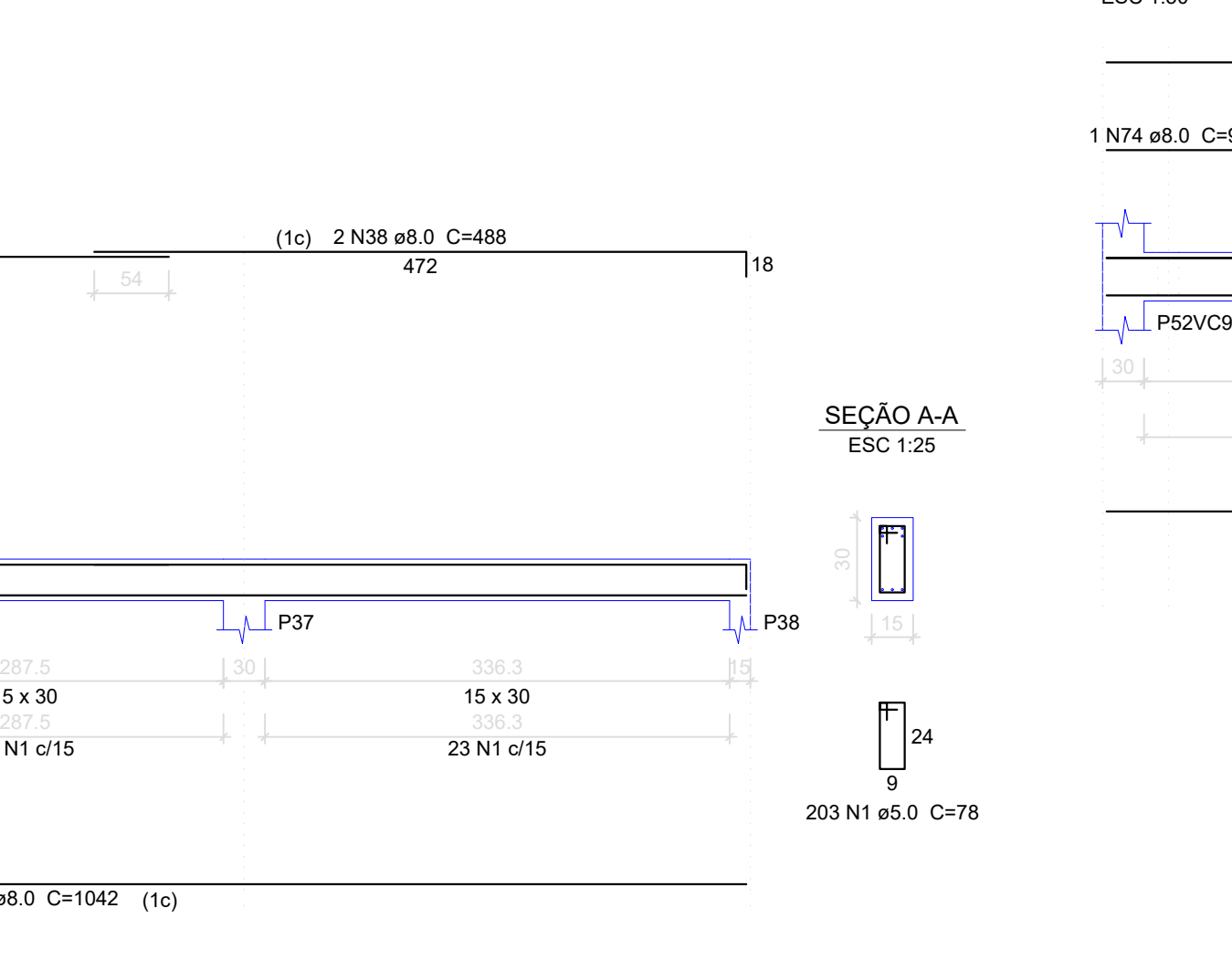
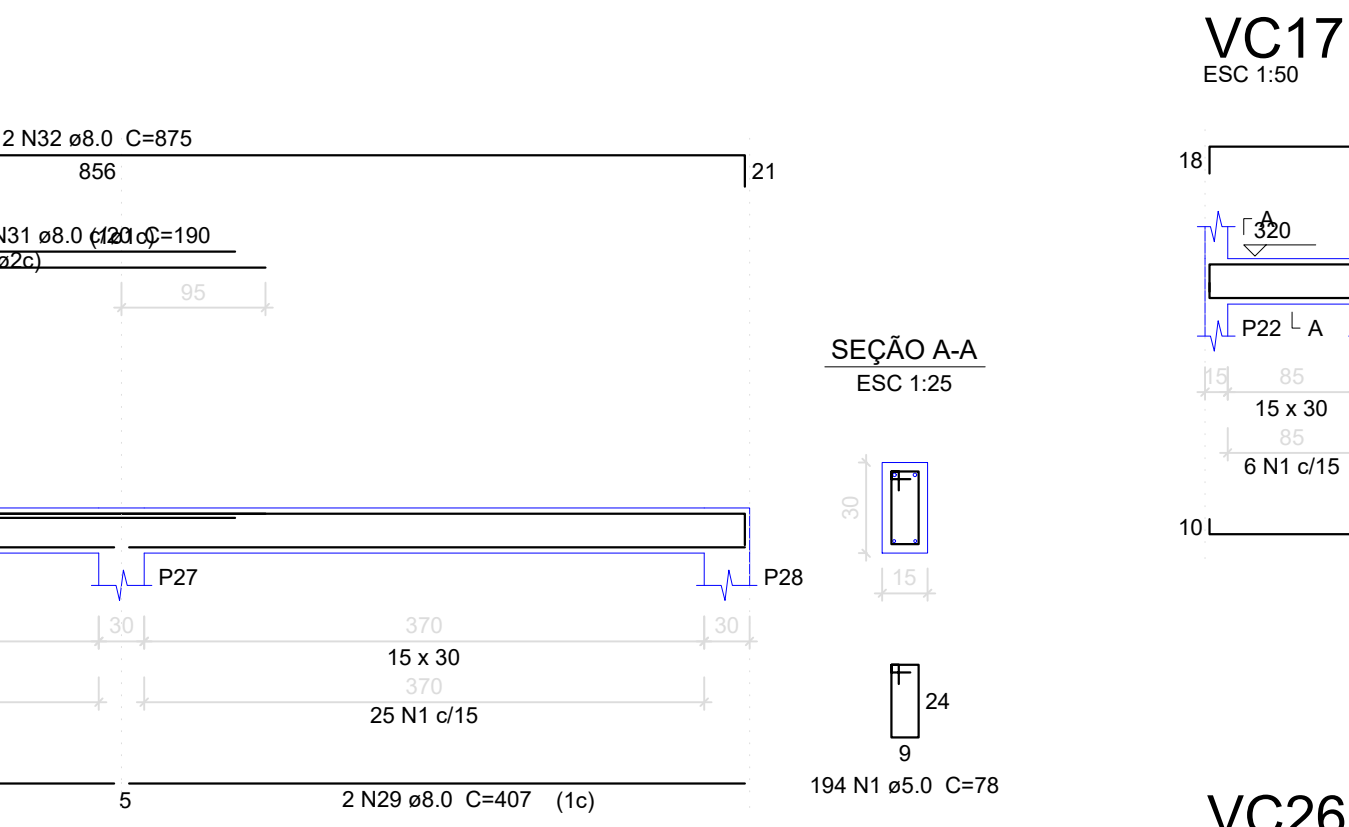
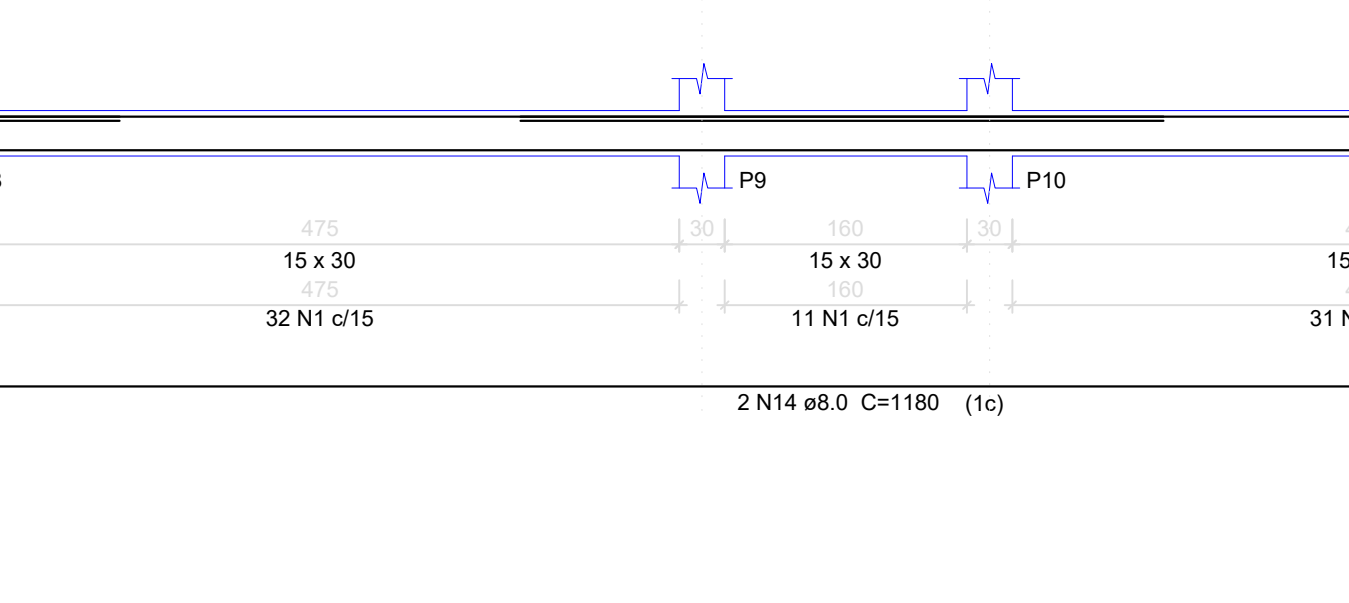
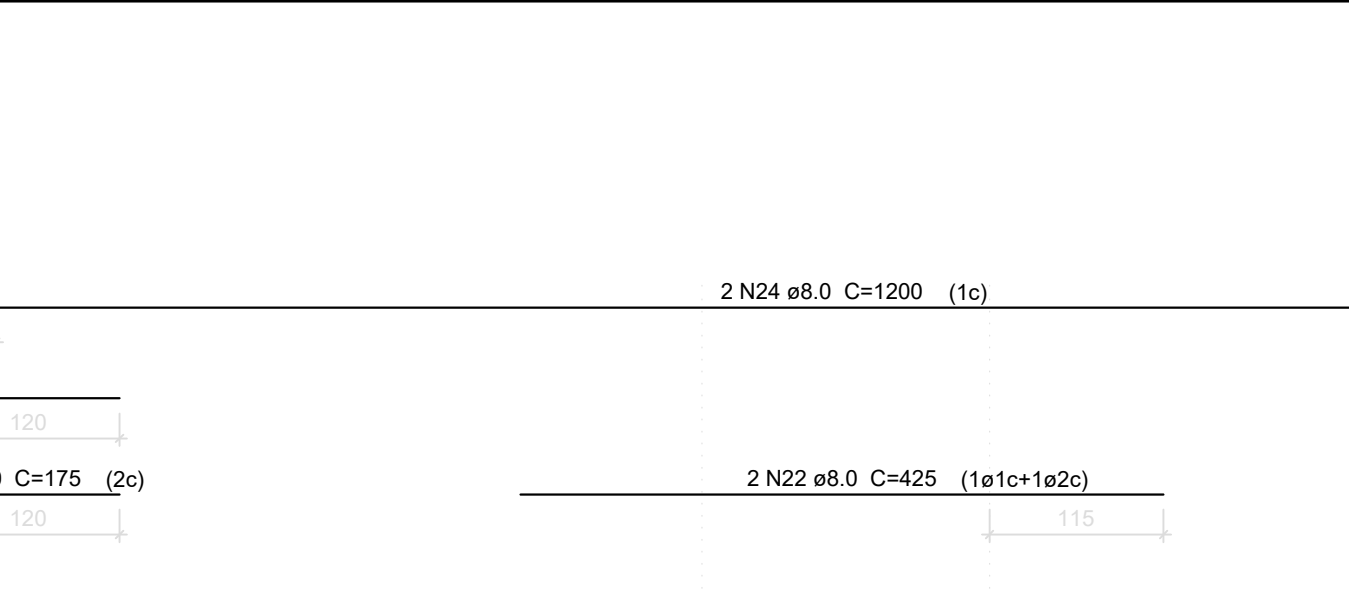
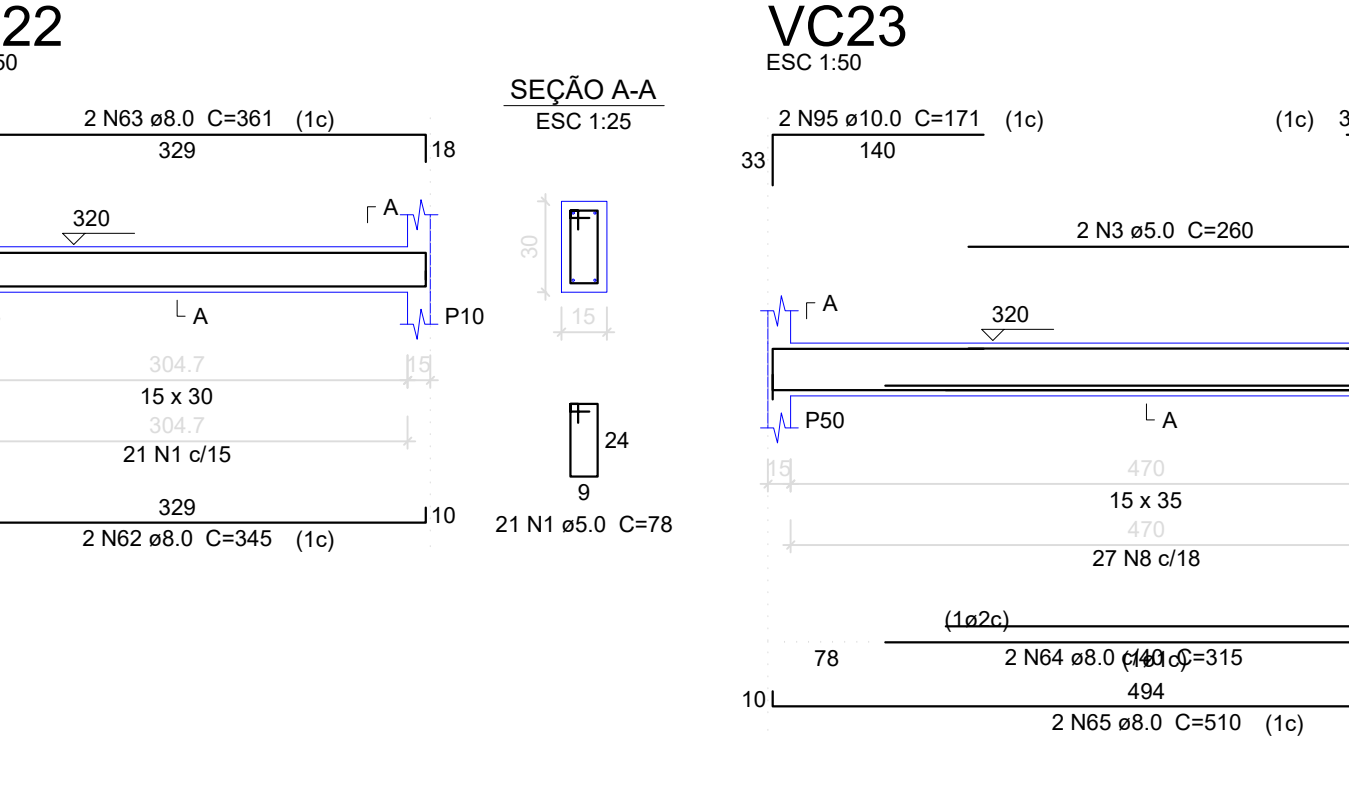
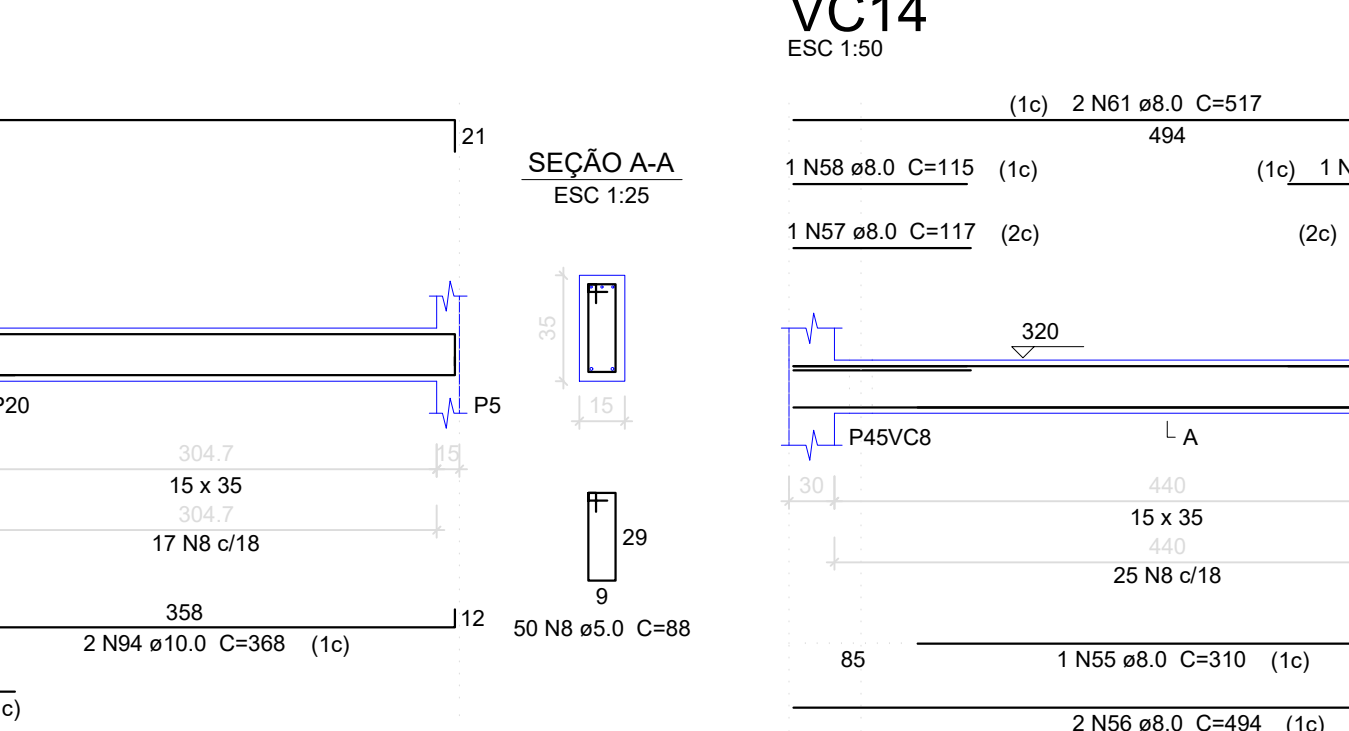
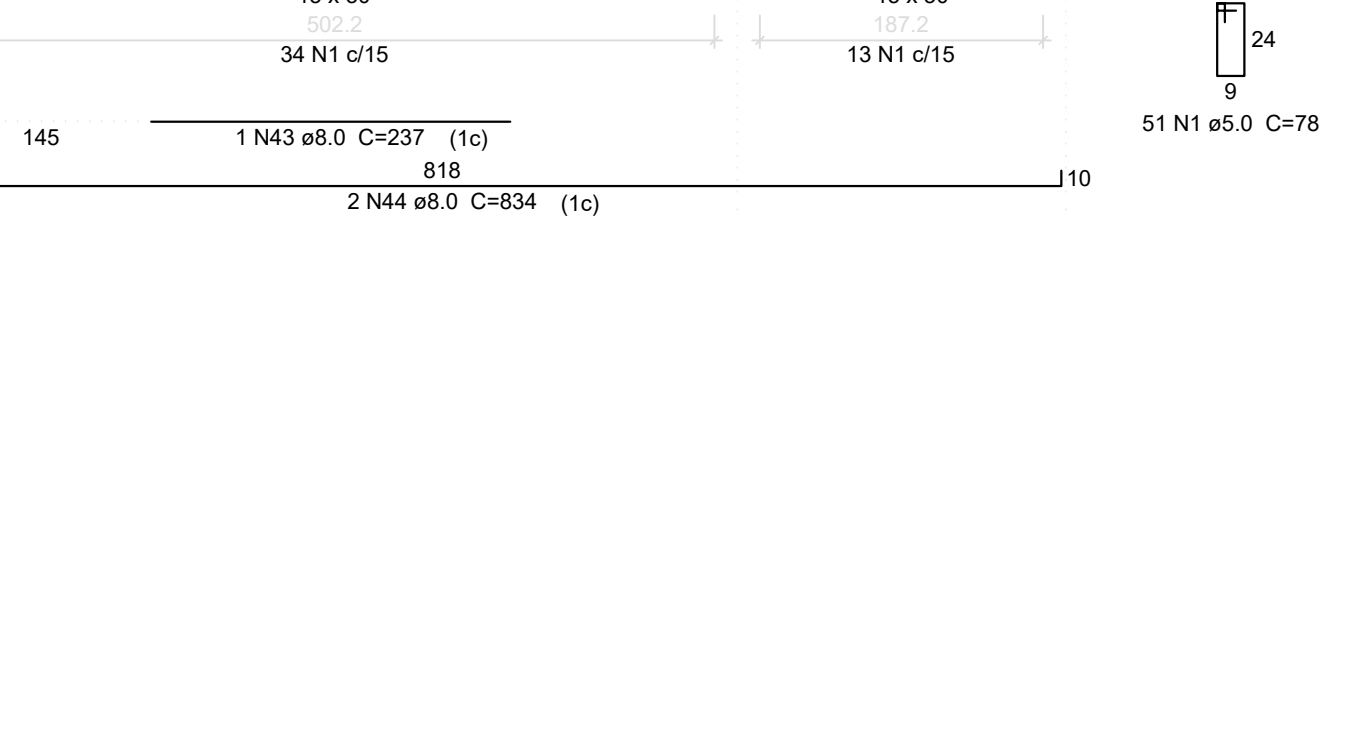
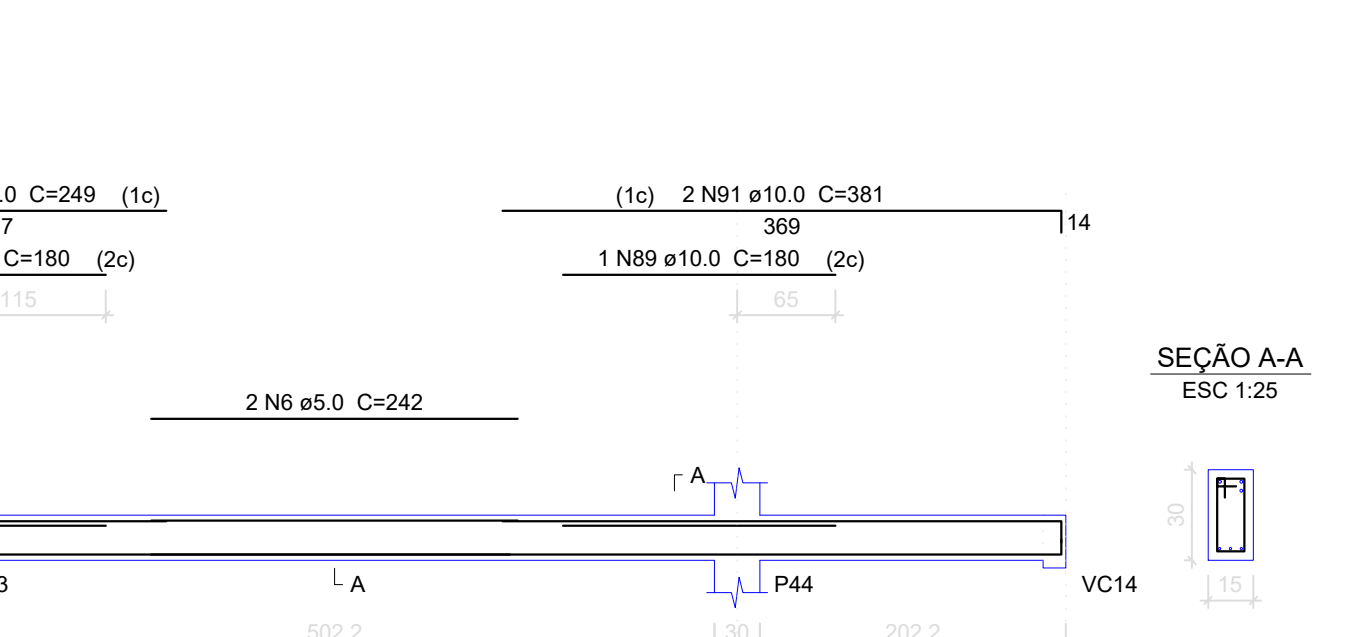
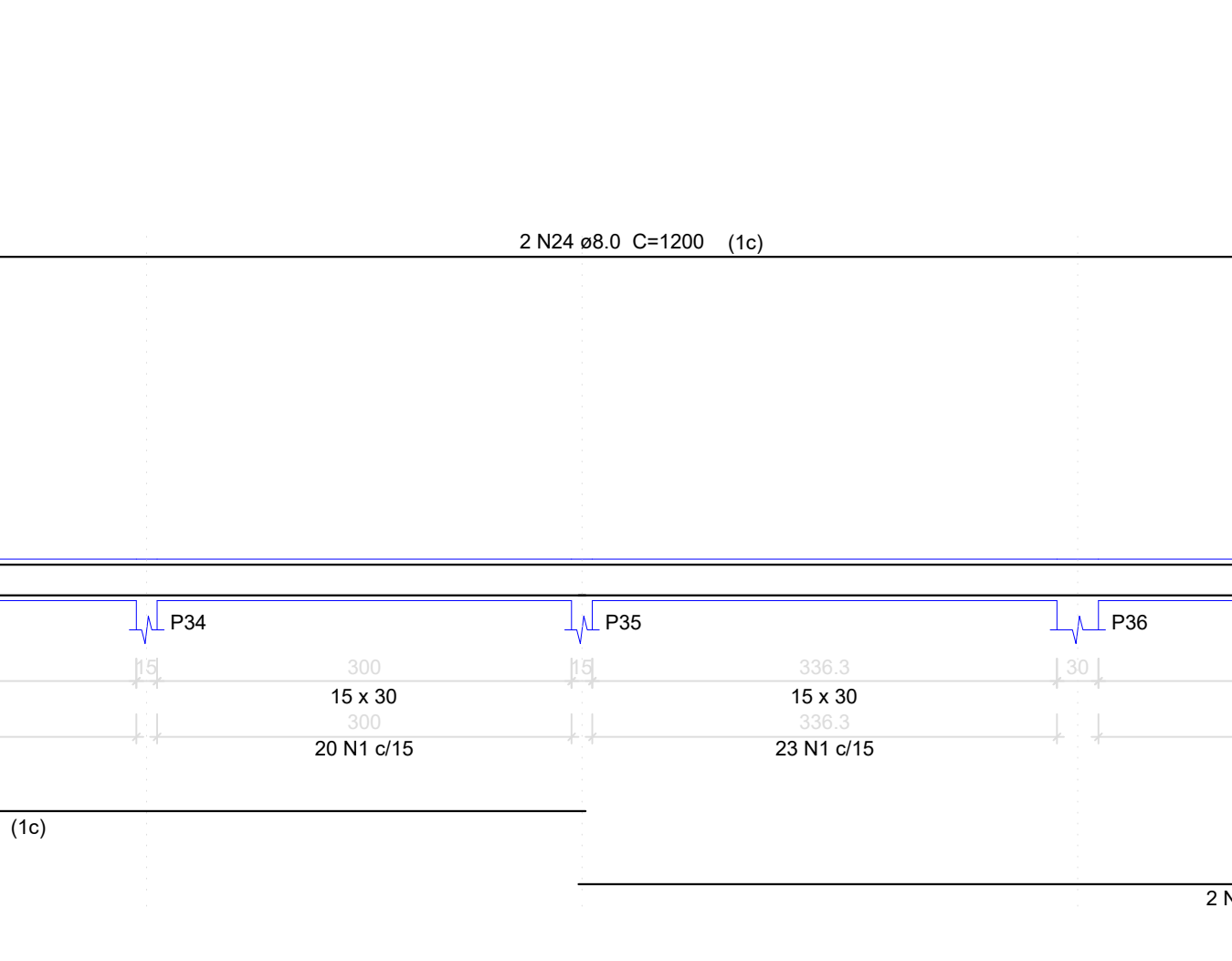
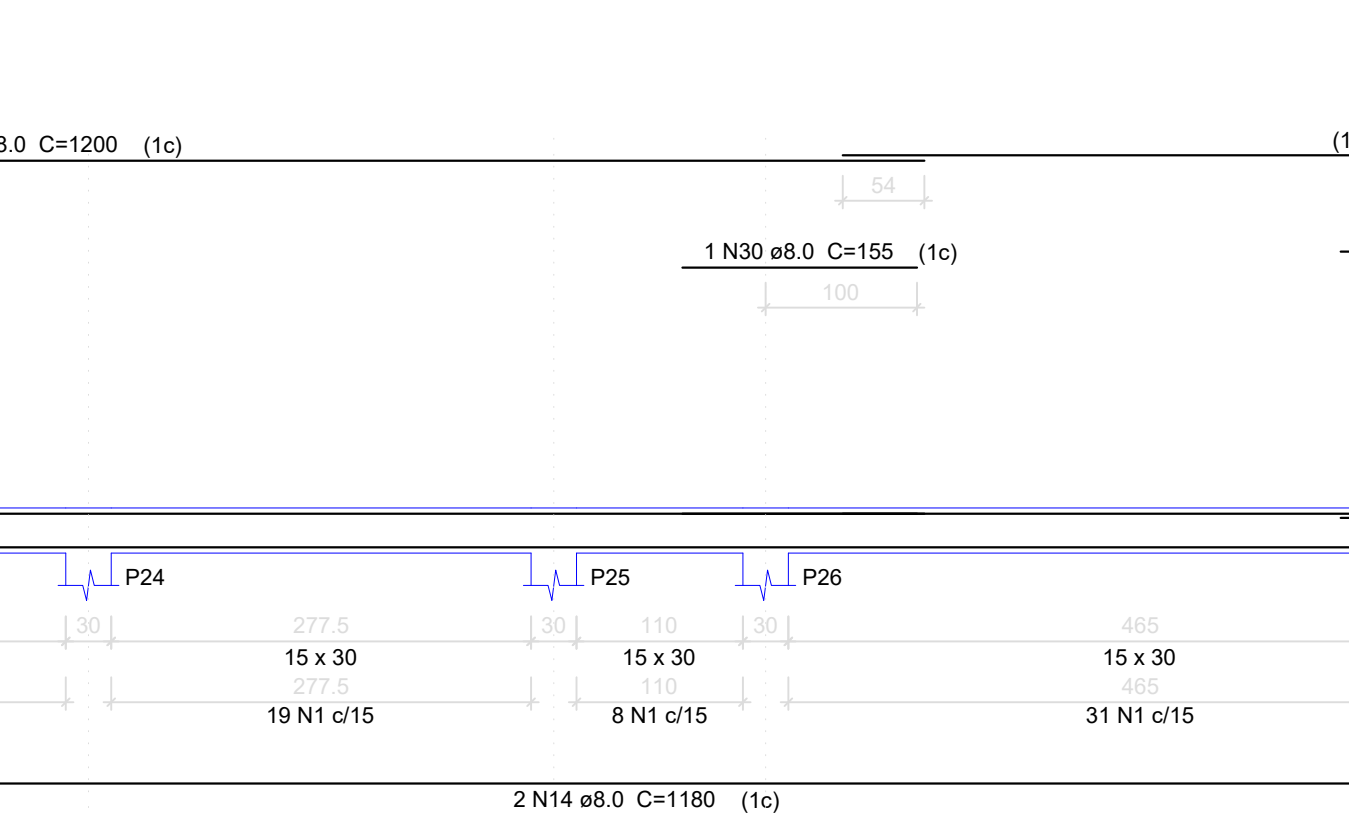
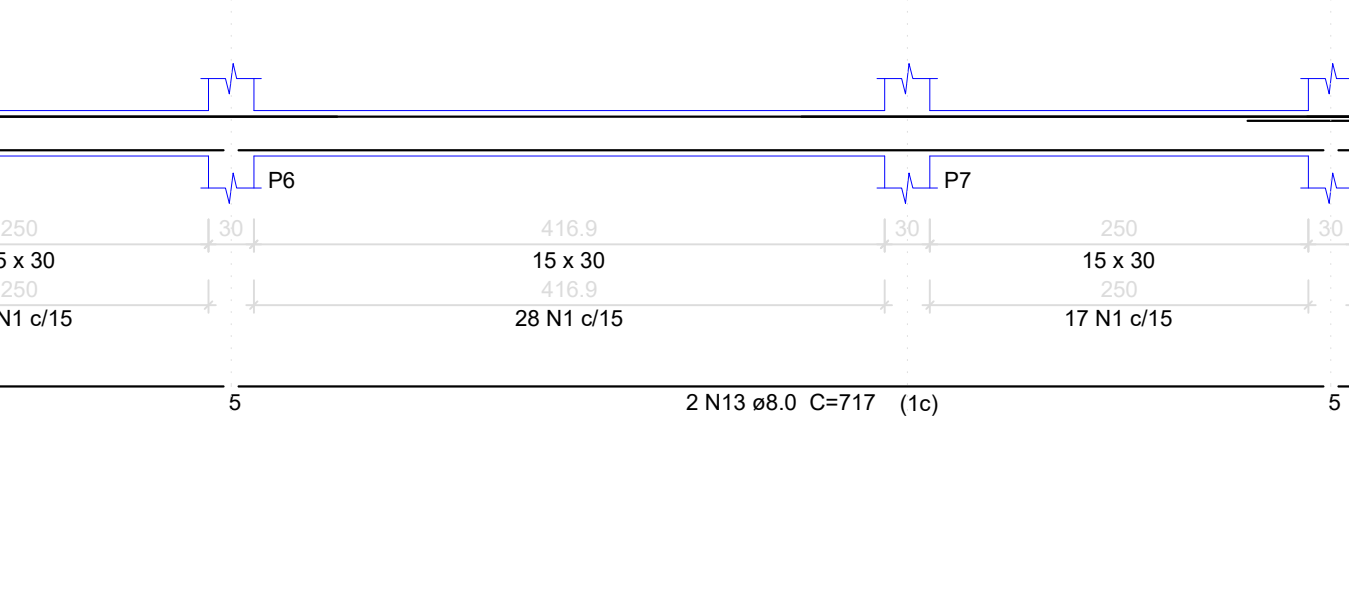
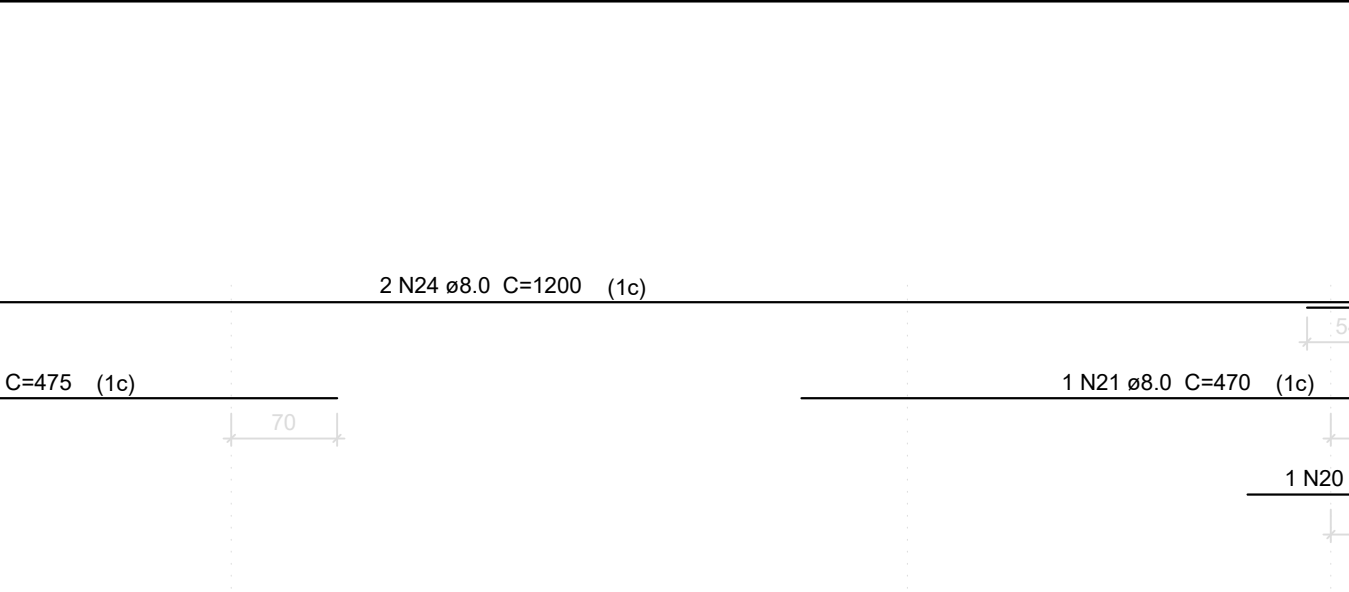
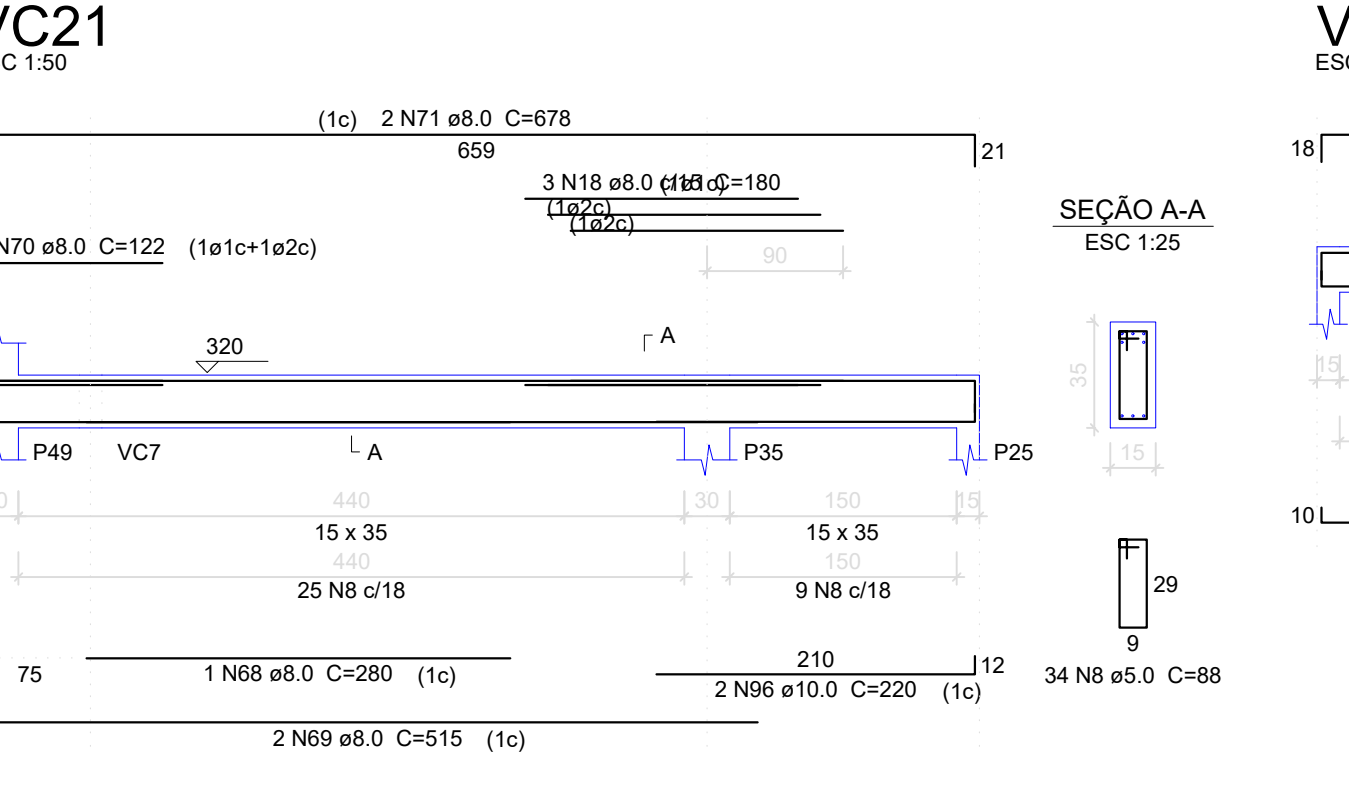
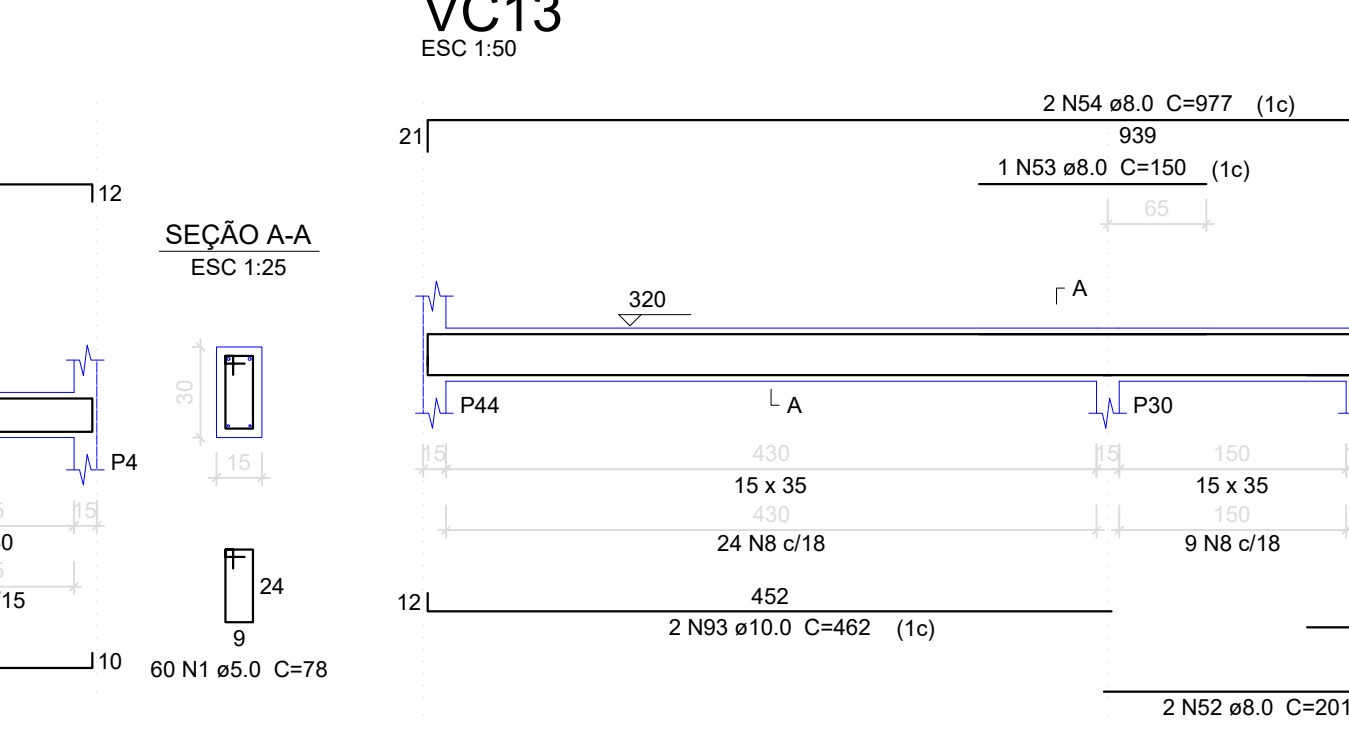
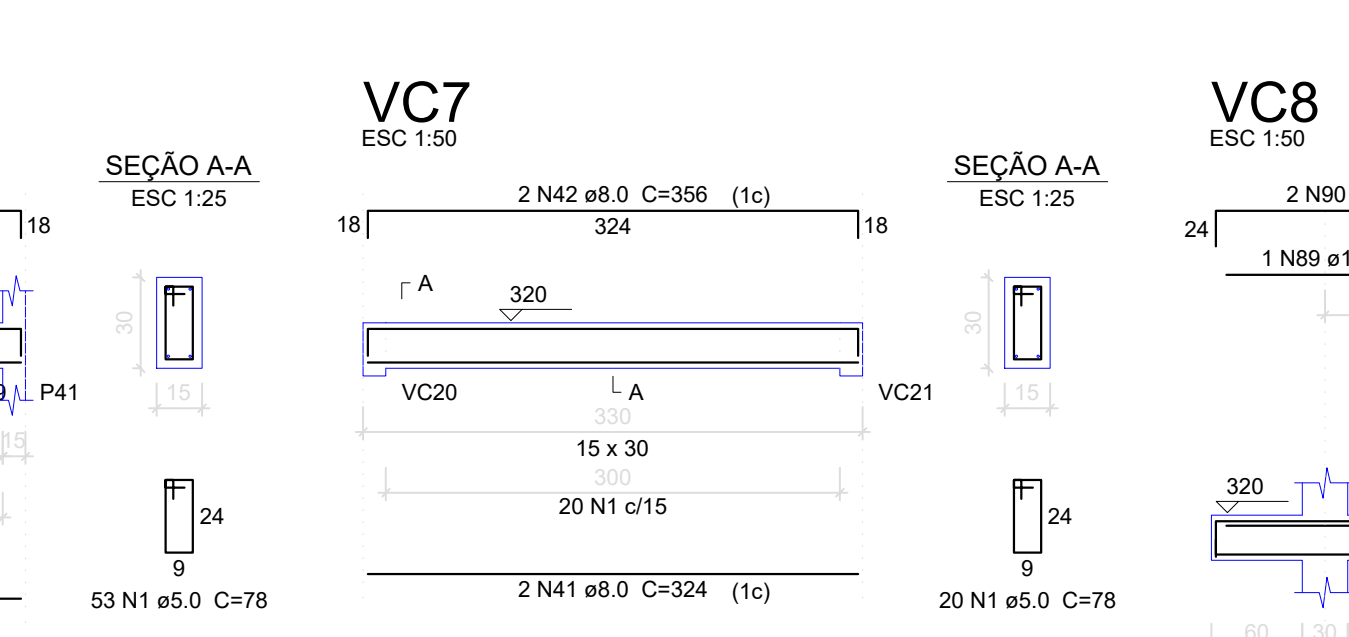
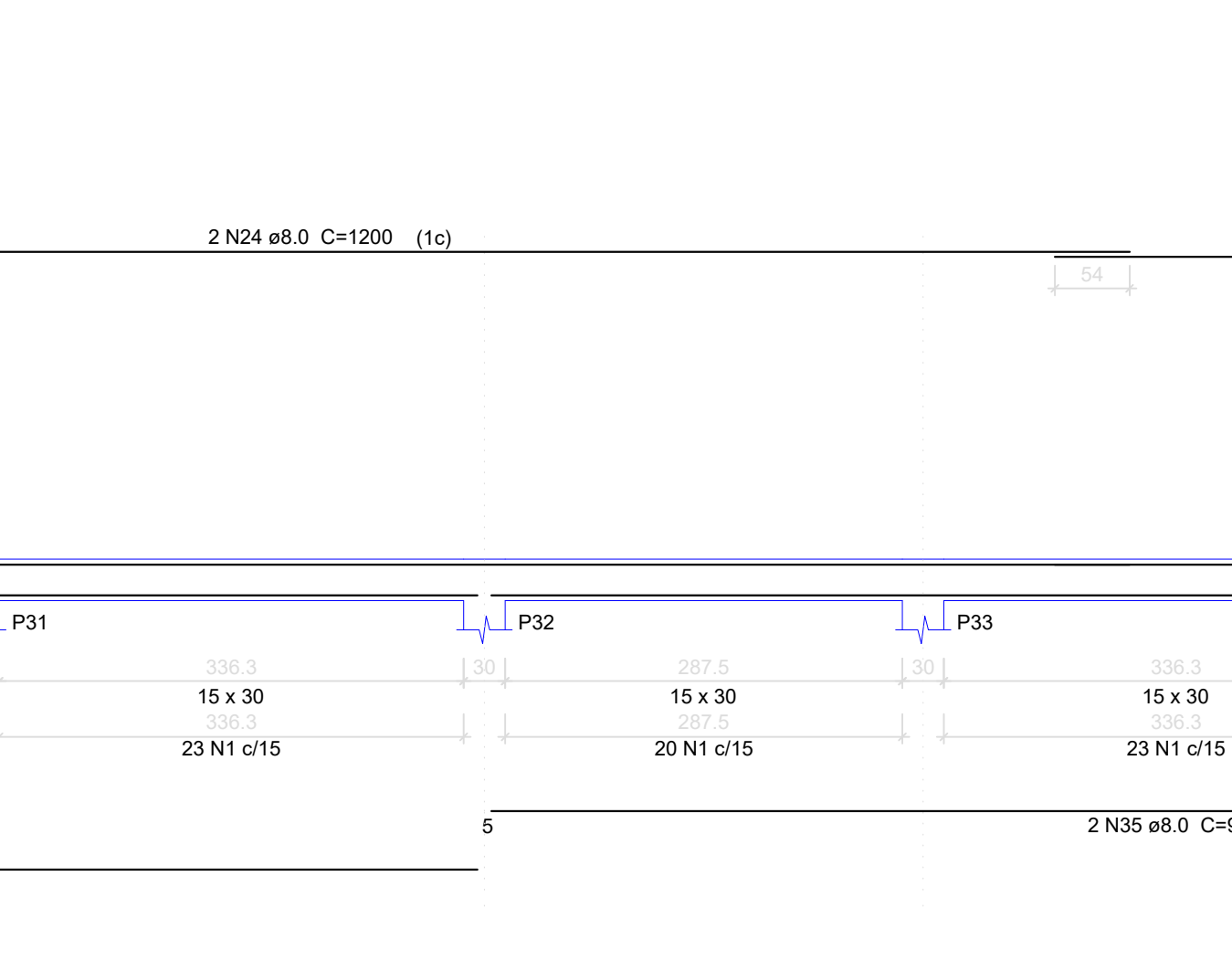
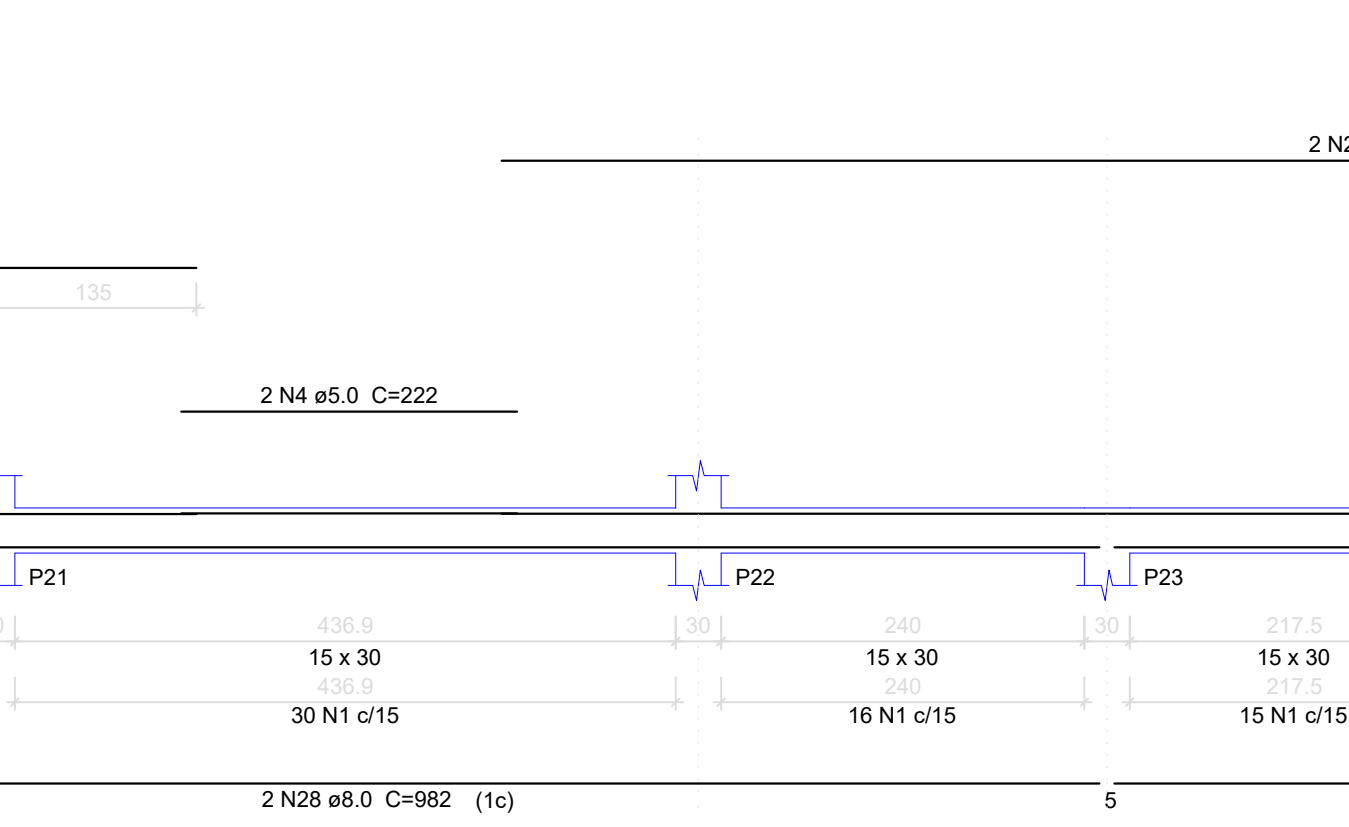
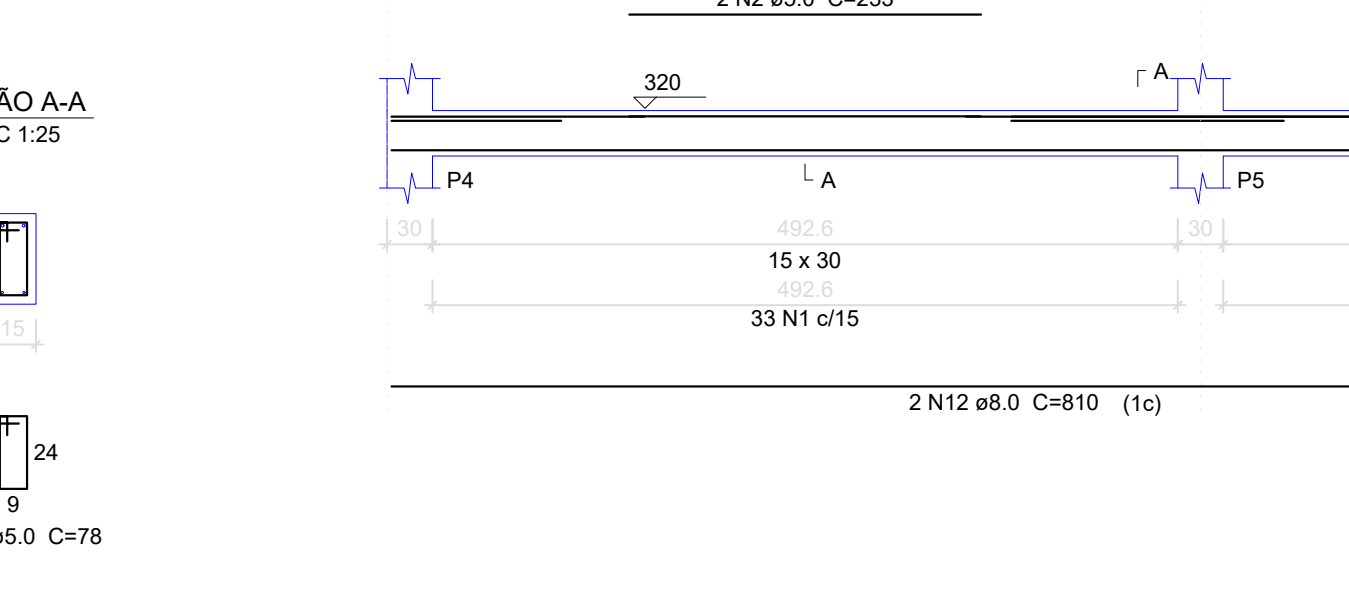
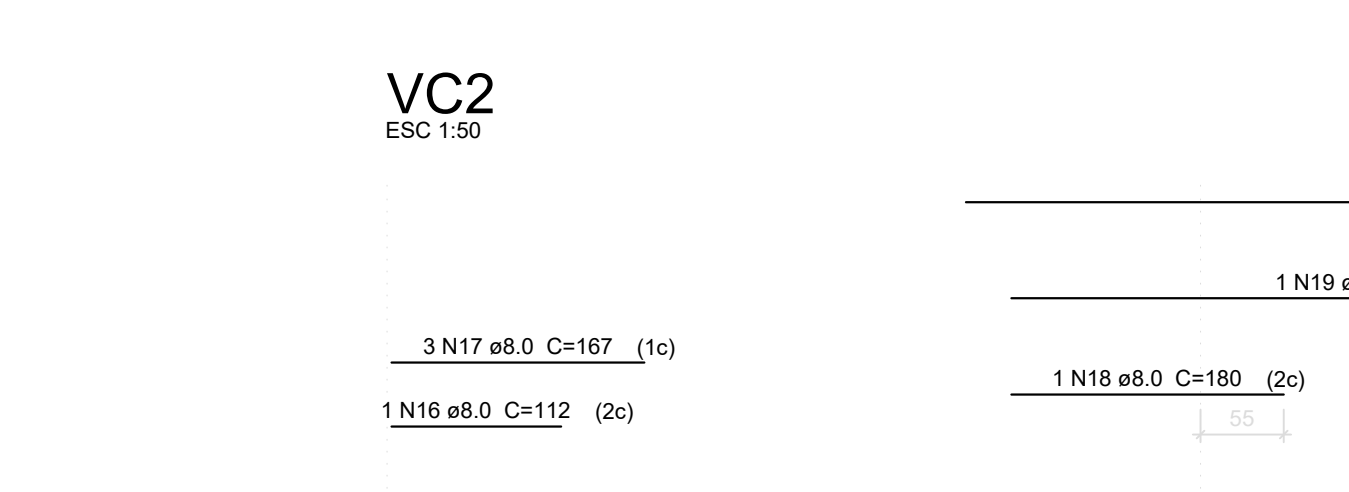


VC1



VC2



Relação do aço

AÇO	N	DIAM	Q	C.TOTAL (kg)	
				ESC 1:50	ESC 1:25
CA50	1	5.0	1281	78	9516
VC7	2	5.0	2	233	208
VC10	3	5.0	6	260	208
VC13	4	5.0	2	222	444
VC16	5	5.0	2	223	444
VC17	6	5.0	2	242	488
VC19	7	5.0	2	222	444
VC22	8	5.0	302	220	2676
VC25	9	5.0	2	230	500
VC28	10	5.0	2	694	1388
VC31	11	8.0	2	710	1420
VC4	12	8.0	2	810	1620
VC7	13	8.0	2	717	1434
VC13	14	8.0	4	1180	4720
VC16	15	8.0	2	717	1434
VC17	16	8.0	1	112	112
VC19	17	8.0	2	425	850
VC22	18	8.0	9	190	1620
VC25	19	8.0	1	475	475
VC28	20	8.0	2	175	350
VC31	21	8.0	1	470	470
VC4	22	8.0	2	425	850
VC7	23	8.0	2	170	340
VC13	24	8.0	10	1200	12000
VC16	25	8.0	2	642	1284
VC17	26	8.0	2	471	942
VC19	27	8.0	2	517	1034
VC22	28	8.0	2	407	814
VC25	29	8.0	1	155	155
VC28	30	8.0	2	190	380
VC31	31	8.0	2	276	552
VC4	32	8.0	1	241	241
VC7	33	8.0	2	1176	2352
VC10	34	8.0	2	980	1960
VC13	35	8.0	2	1042	2084
VC16	36	8.0	2	800	1600
VC17	37	8.0	2	259	518
VC19	38	8.0	2	488	976
VC22	39	8.0	2	850	1700
VC25	40	8.0	2	556	1112
VC28	41	8.0	2	324	648
VC31	42	8.0	2	714	1428
VC4	43	8.0	1	237	237
VC7	44	8.0	2	834	1668
VC13	45	8.0	4	167	668
VC16	46	8.0	2	730	1460
VC19	47	8.0	4	1644	4116
VC22	48	8.0	4	1076	4304
VC25	49	8.0	2	947	1894
VC28	50	8.0	1	85	85
VC31	51	8.0	2	145	290
VC4	52	8.0	3	310	930
VC7	53	8.0	1	150	150
VC10	54	8.0	2	977	1954
VC13	55	8.0	3	1107	3321
VC16	56	8.0	2	494	988
VC19	57	8.0	1	117	117
VC22	58	8.0	1	115	115
VC25	59	8.0	1	135	135
VC28	60	8.0	2	190	380
VC31	61	8.0	2	517	1034
VC4	62	8.0	10	345	3450
VC7	63	8.0	8	361	2888
VC10	64	8.0	6	315	1890
VC13	65	8.0	6	510	4080
VC16	66	8.0	9	132	1188
VC19	67	8.0	2	363	726
VC22	68	8.0	2	280	560
VC25	69	8.0	4	515	2060
VC28	70	8.0	4	122	488
VC31	71	8.0	4	678	2712
VC4	72	8.0	2	150	300
VC7	73	8.0	2	688	1376
VC10	74	8.0	1	92	92
VC13	75	8.0	1	150	150
VC16	76	8.0	2	988	1976
VC19	77	8.0	4	607	2428
VC22	78	8.0	1	220	220
VC25	79	8.0	3	165	495
VC28	80	8.0	2	693	1386
VC31	81	8.0	2	316	632
VC4	82	8.0	2	332	664
VC7	83	8.0	4	659	2636
VC10	84	8.0	1	82	82
VC13	85	8.0	2	190	380
VC16	86	8.0	2	142	284
VC19	87	10.0	2	545	1090
VC22	88	10.0	2	179	358
VC25	89	10.0	2	180	360
VC28	90	10.0	2	468	936
VC31	91	10.0	2	381	762
VC4	92	10.0	2	604	1208
VC7	93	10.0	2	462	924
VC10	94	10.0	4	368	1472
VC13	95	10.0	6	171	1026
VC16	96	10.0	4	220	880
VC19	97	10.0	2	692	1384
VC22	98	12.5	2	500	1000

Resumo do aço

AÇO	DIAM	C.TOTAL (kg)	PESO (kg)
CA50	8.0	1050.6	414.5
	10.0	100.5	63.8
CA80	12.5	11	10.6
	5.0	1313.6	202.5

PESO TOTAL: 689.4

Vol. de concreto total (C=30) = 12.34 m³
 Área de forma total = 204.23 m²

PREFEITURA MUNICIPAL DE GOVERNADOR LINDENBERG

PROJETO DE CONSTRUÇÃO DO CENTRO DE CONVIVÊNCIA

TÍTULO: **ESTRUTURAL**

CONTEÚDO: **NOVEMBRO de 2023**

DETALHAMENTO DAS VÍSGAS DO NÍVEL COBERTURA

ÁREA TOTAL COM ABRAÇADURA: **390,95 m²**

INDICADA

ABRANHO: **DISTRITO DE CORRICO MOACIR, GOVERNADOR LINDENBERG - ES**

01 / 08

PREFEITO: **LEONARDO FINCO**

RESP. TÉCNICO: **JOSÉ CARLOS FIORINI FIROTY CREA-ES 684642/20**

PREFEITURA MUNICIPAL DE GOVERNADOR LINDENBERG
 CNPJ: 04.217.886/0001-54
 (77) 3744-5214