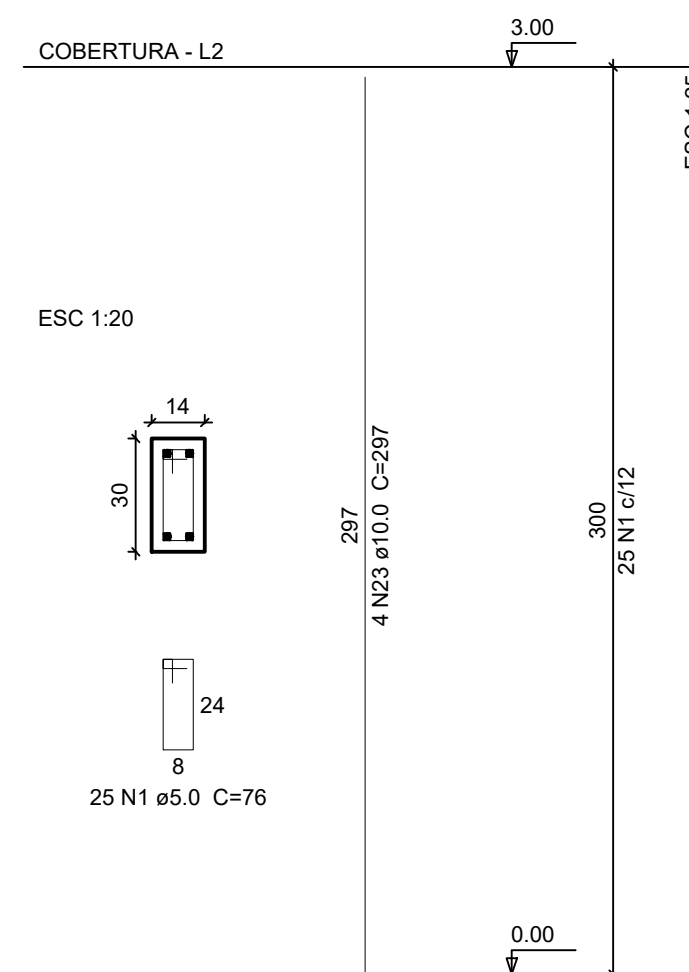
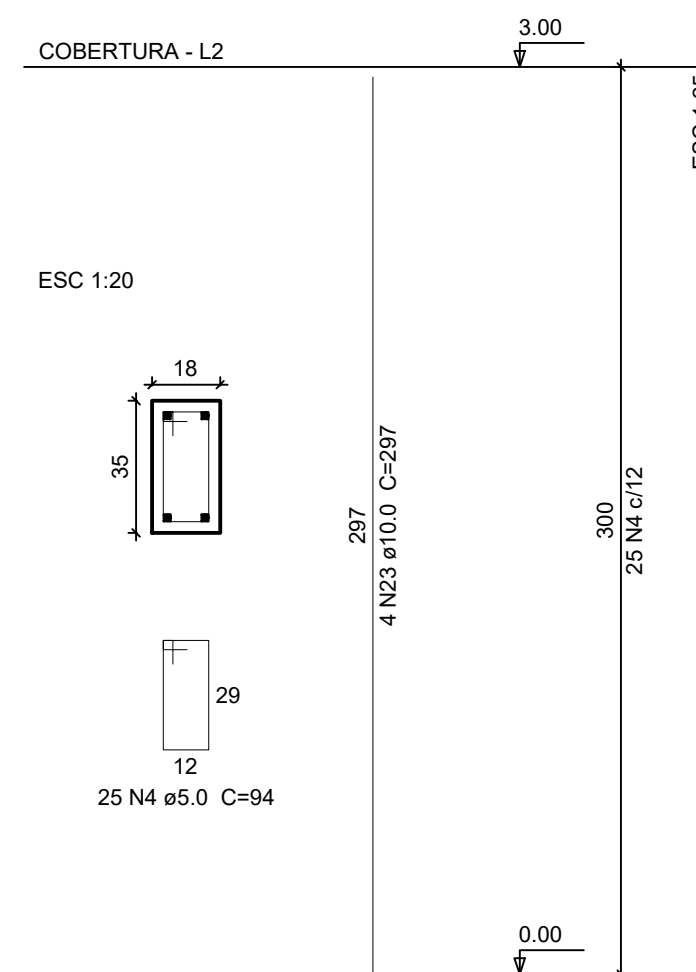


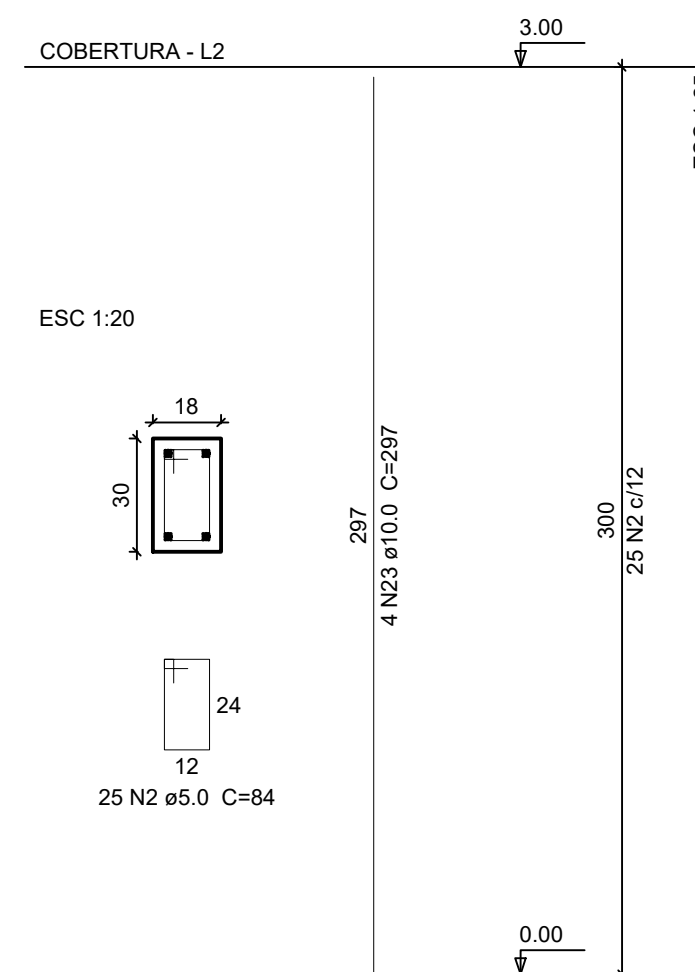
P1=P2=P4=P8=P10=P11=P12



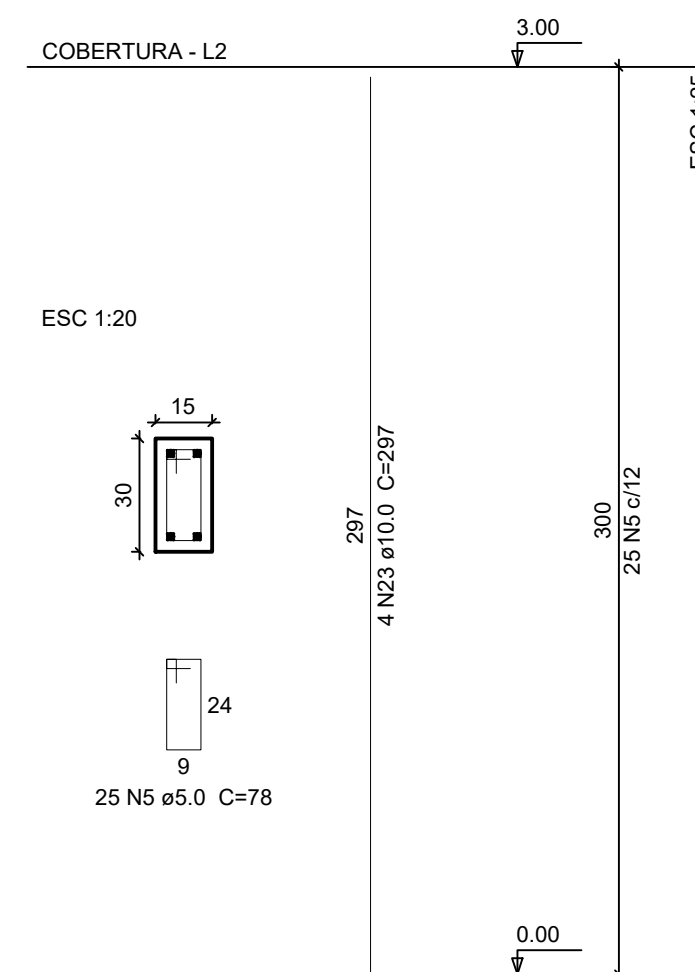
P3=P9



P5



P6



Relação do aço

7xP1	2xP3	P5
P6	VC1	VC2
VC3	VC4	VC5
VC6	VC7	VC8
VC9	VC10	

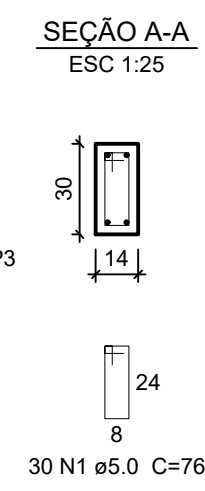
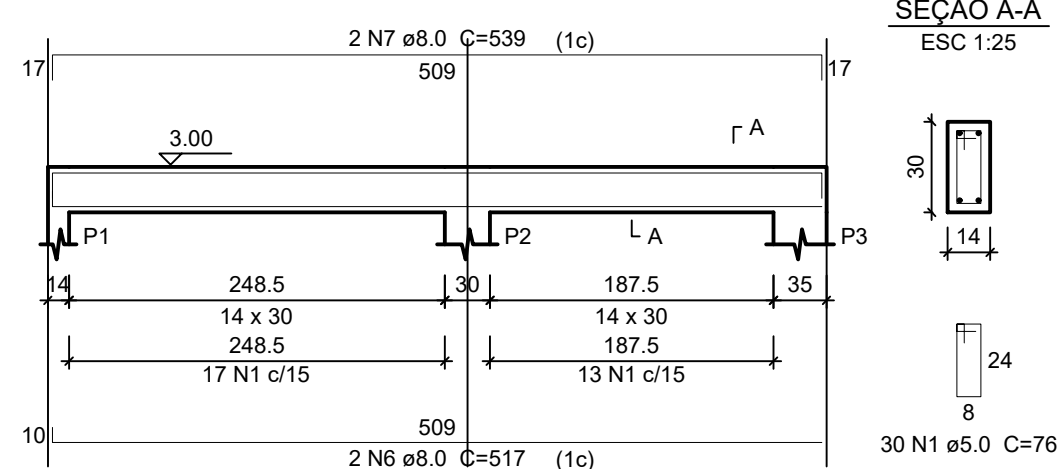
AÇO	N	DIAM	Q	UNIT (cm)	C.TOTAL (cm)
CA60	1	5.0	409	76	31084
	2	5.0	29	84	2436
	3	5.0	41	104	4264
	4	5.0	50	94	4700
	5	5.0	25	78	1950
CA50	6	8.0	2	517	1034
	7	8.0	2	539	1078
	8	8.0	4	74	296
	9	8.0	2	111	222
	10	8.0	2	242	484
	11	8.0	2	256	512
	12	8.0	2	247	494
	13	8.0	2	270	540
	14	8.0	2	116	232
	15	8.0	2	509	1018
	16	8.0	2	523	1046
	17	8.0	2	1039	2078
	18	8.0	2	233	466
	19	8.0	2	1045	2090
	20	10.0	2	1079	2158
	21	10.0	2	266	532
	22	10.0	2	837	1674
	23	10.0	44	297	13068
	24	12.5	2	1057	2114
	25	12.5	2	865	1730

Resumo do aço

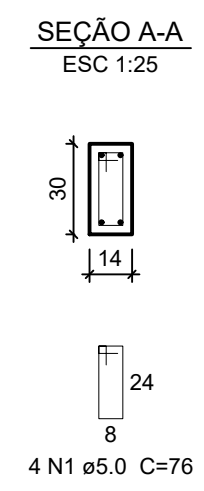
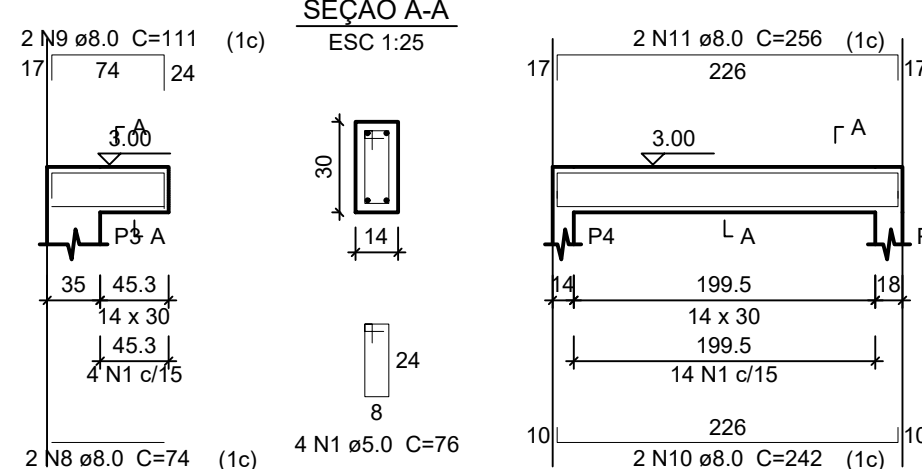
AÇO	DIAM	C.TOTAL (m)	PESO (kg)
CA50	8.0	115.9	45.7
	10.0	174.4	107.5
	12.5	38.5	37
CA60	5.0	444.4	68.5
PESO TOTAL			
CA50		190.2	
CA60		68.5	

Vol. de concreto total (C-30) = 3.83 m³  
Área de forma total = 67.99 m²

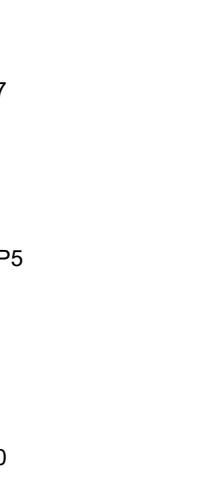
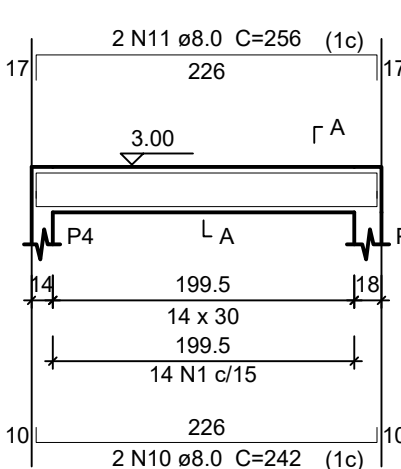
VC1 ESC 1:50



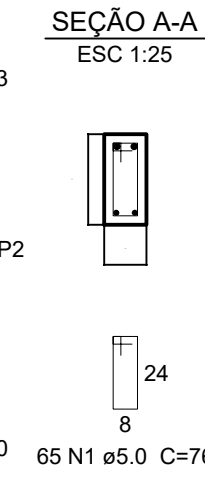
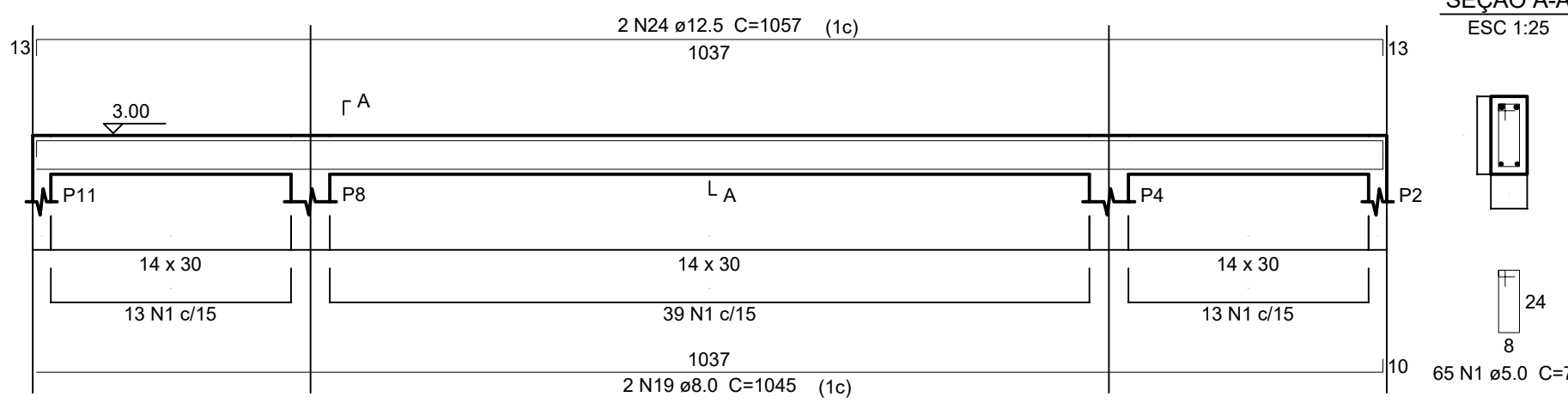
VC2 ESC 1:50



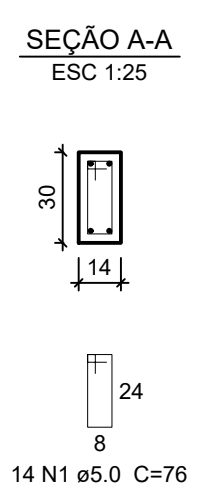
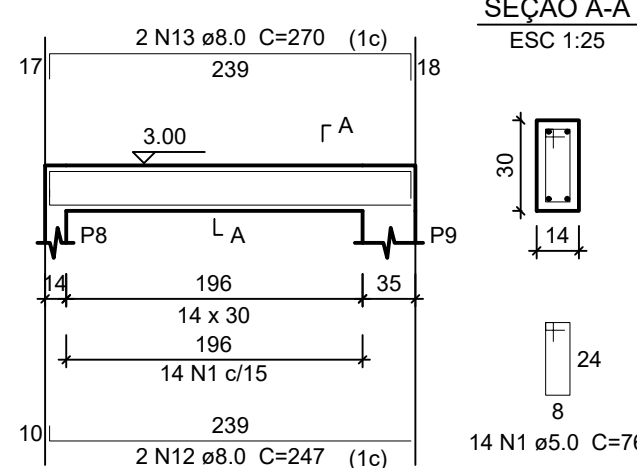
VC3 ESC 1:50



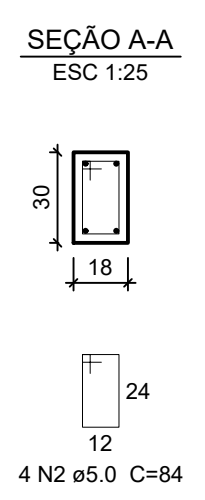
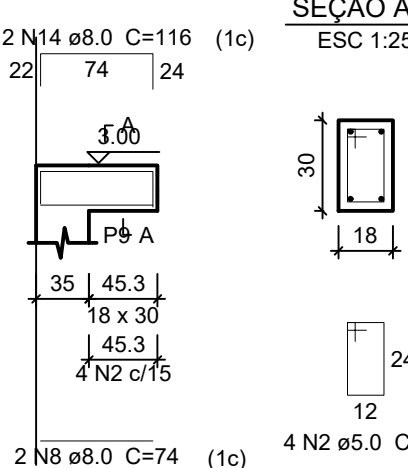
VC8 ESC 1:50



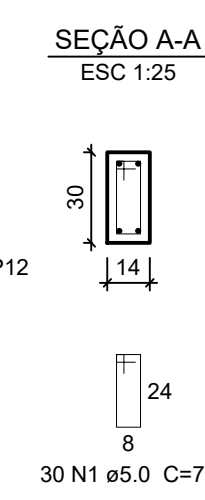
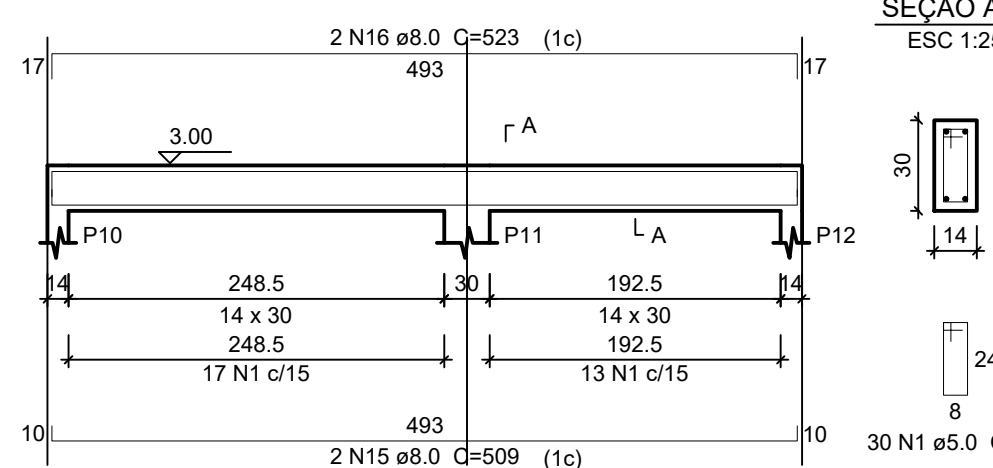
VC4 ESC 1:50



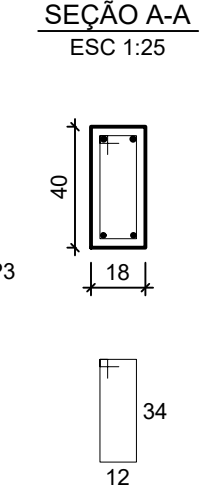
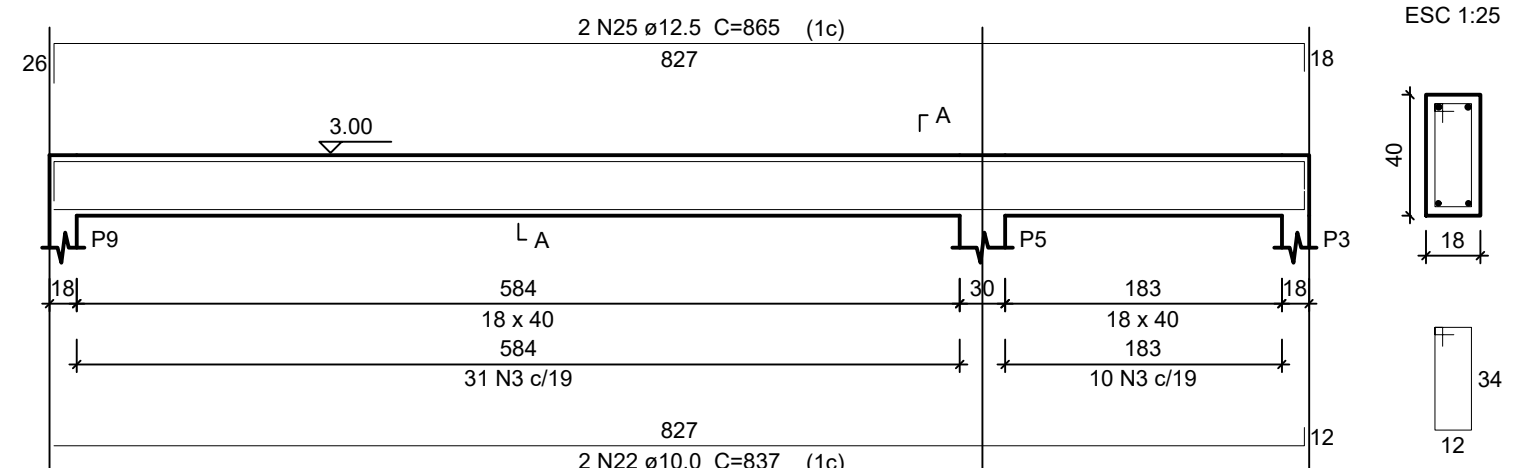
VC5 ESC 1:50



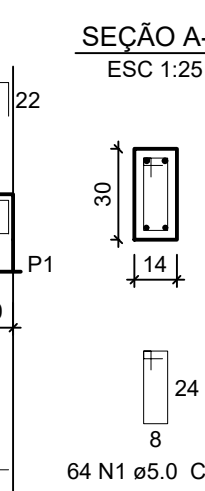
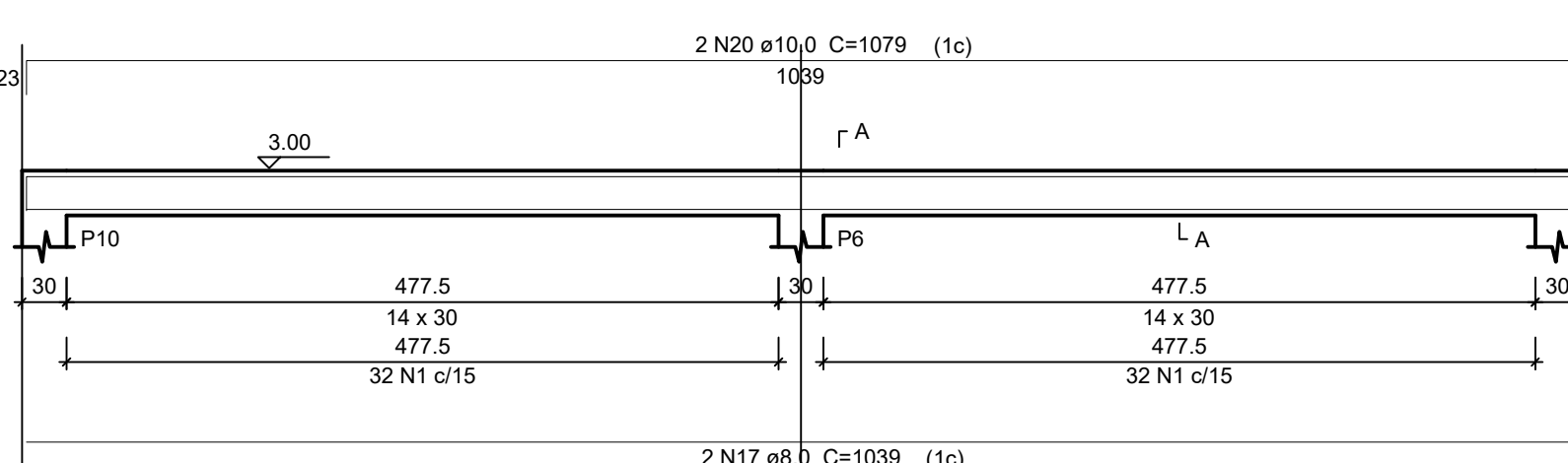
VC6 ESC 1:50



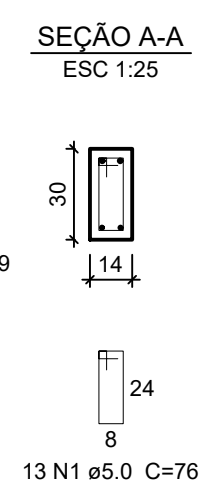
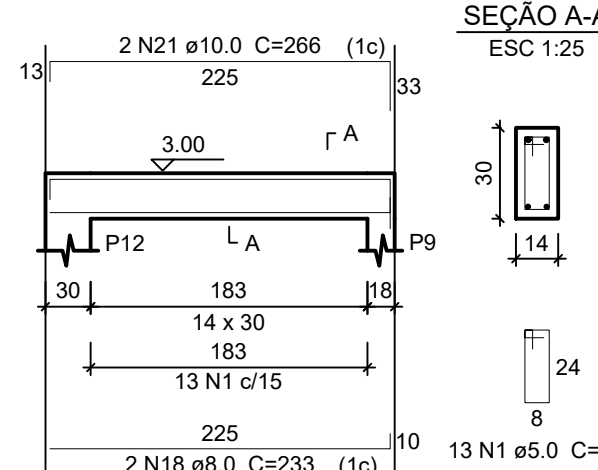
VC10 ESC 1:50



VC7 ESC 1:50



VC9 ESC 1:50



PREFEITURA MUNICIPAL DE GOVERNADOR LINDENBERG

TÍTULO: PROJETO DE CONSTRUÇÃO DO VESTIÁRIO CAMPO BOM DE BOLA

ESTRUTURAL

CONTEÚDO I	ÁREA TOTAL COM AMPLIAÇÃO I	ESCALA I
PILARES E VIGAS COBERTURA	52,25 m²	indicada
ASSUNTO I	ENDEREÇO I	CONJUNTO I
PROJETO DE CONSTRUÇÃO DO VESTIÁRIO CAMPO BOM DE BOLA	ES-245, DISTRITO DE NOVO BRASIL GOVERNADOR LINDENBERG - ES	02
		06 08

PREFEITO: LEONARDO FINCO  
RESP. TÉCNICO: MARLLONE DOS SANTOS PLOTTEGHER CREA-ES 0048556/D  
PREFEITURA MUNICIPAL DE GOVERNADOR LINDENBERG  
CNPJ: 04.237.786/0001-54  
(27) 3744-5214