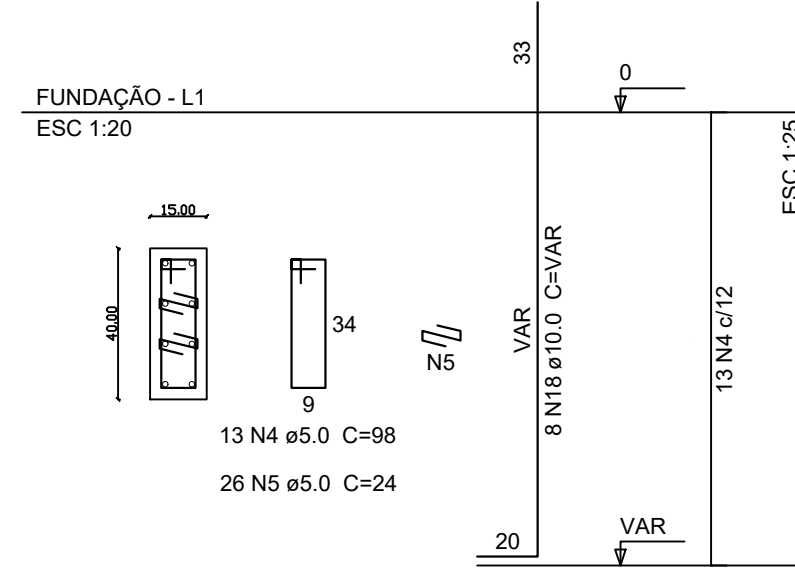
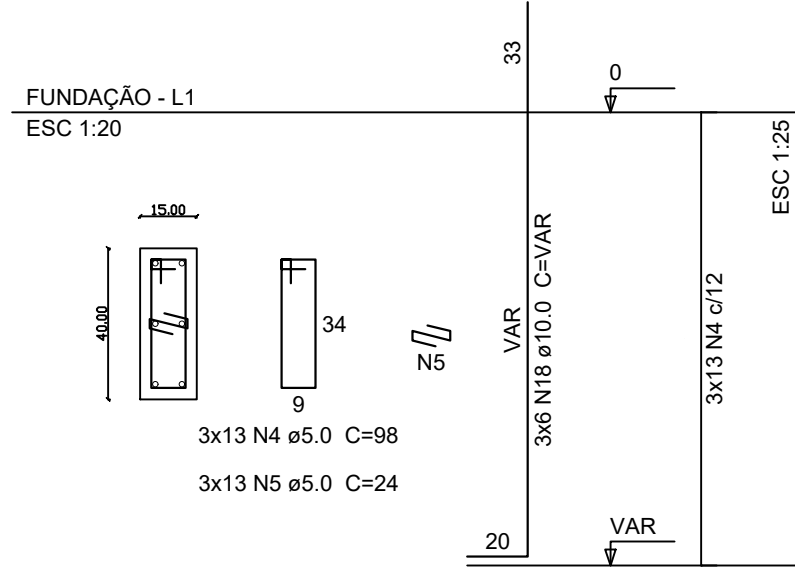


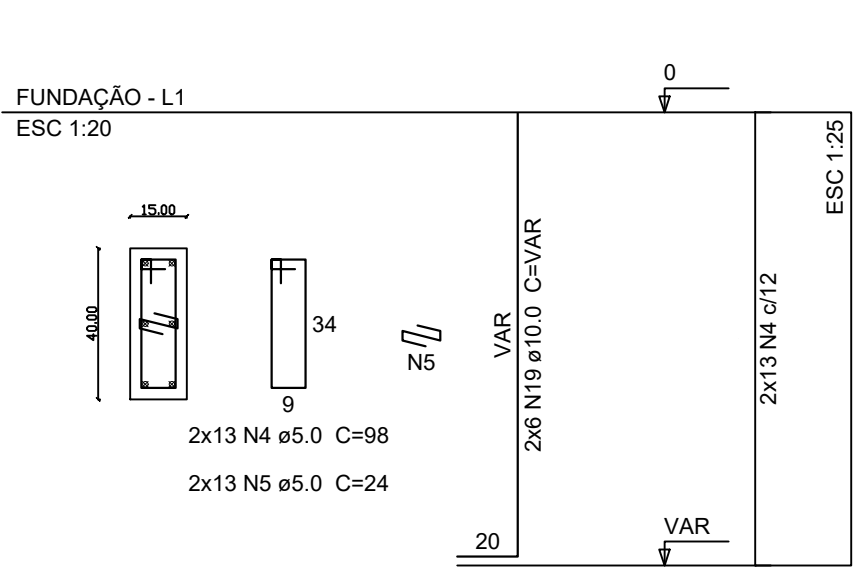
P12



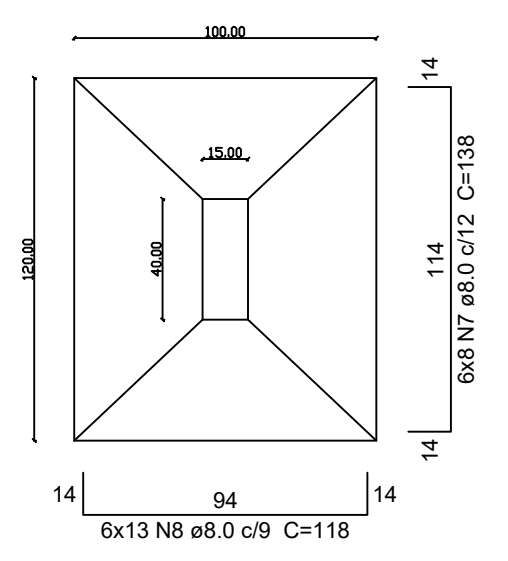
P11=P14=P15



P28=P30

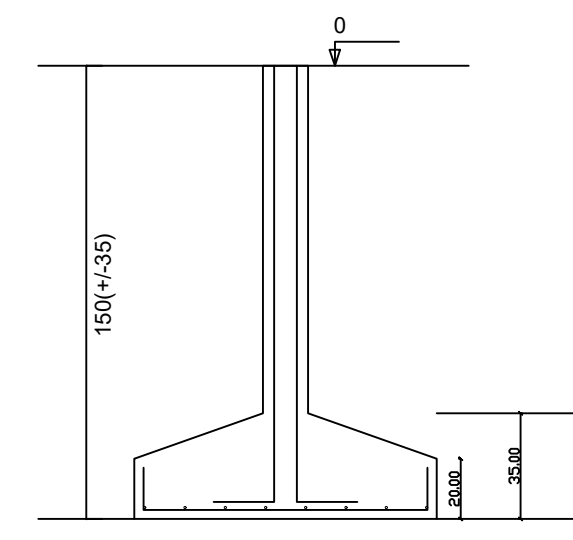


PLANTA
ESC 1:25



Solo com capacidade de suporte > 150.00 kN/m²
Solo compactado sobre a sapata
peso específico > 16.00 kN/m³

CORTE
ESC 1:25



Relação do aço

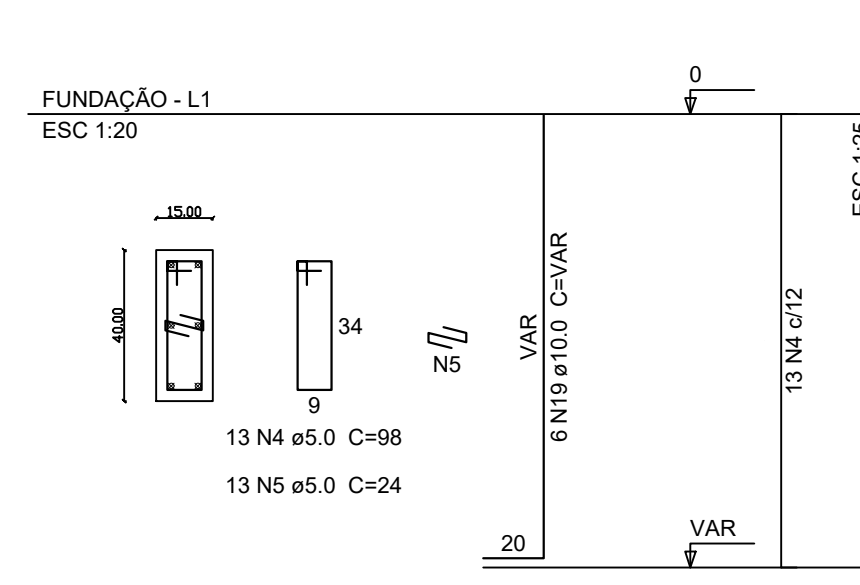
AÇO	N	DIAM	Q	UNIT (cm)	C.TOTAL (cm)
CA60	1	5.0	52	128	6656
	2	5.0	104	29	3016
	3	5.0	52	138	7176
	4	5.0	286	98	28028
	5	5.0	338	24	8112
CA50	6	8.0	65	108	7020
	7	8.0	83	138	11454
	8	8.0	206	118	24308
	9	8.0	56	143	8008
	10	8.0	45	93	4185
	11	8.0	10	88	880
	12	8.0	6	118	708
	13	8.0	44	103	4532
	14	8.0	28	128	3584
	15	8.0	9	103	927
	16	8.0	7	123	861
	17	8.0	14	168	2352
	18	10.0	176	VAR	VAR
	19	10.0	24	VAR	VAR
	20	10.0	14	142	1988

Resumo do aço

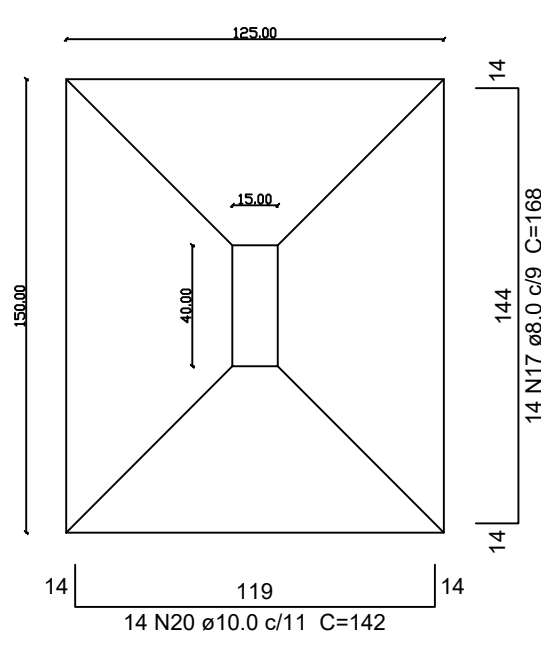
AÇO	DIAM	C.TOTAL (m)	PESO * 10 % (kg)
CA50	8.0	669.2	298.7
CA60	10.0	413.3	280.3
CA60	5.0	529.9	89.8
PESO TOTAL			
CA50	579		
CA60	89.8		

Vol. de concreto total (C-30) = 11.8 m³
Área de forma total = 78.8 m²

P27

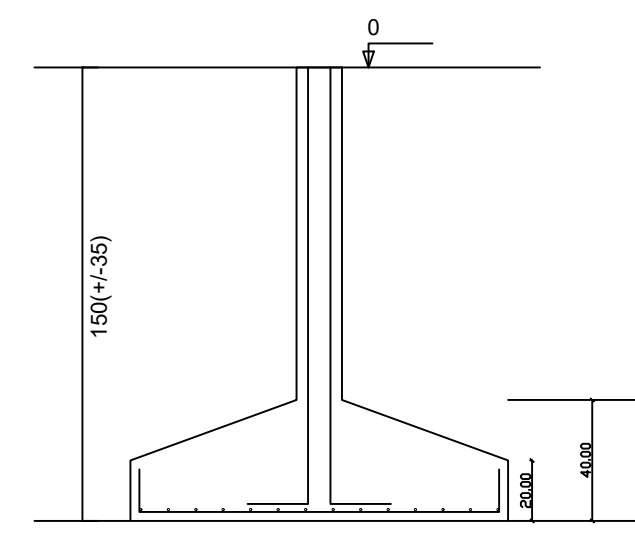


S27
PLANTA
ESC 1:25

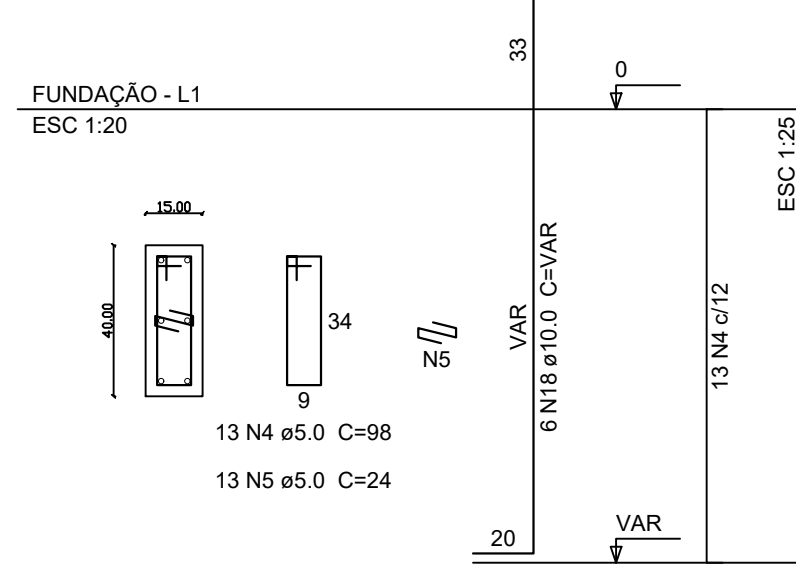


Solo com capacidade de suporte > 150.00 kN/m²
Solo compactado sobre a sapata
peso específico > 16.00 kN/m³

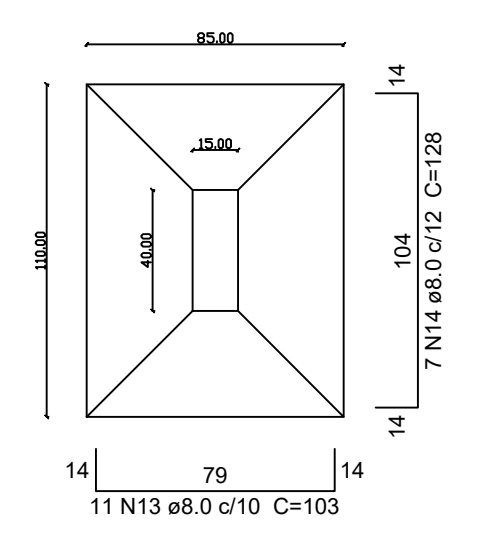
CORTE
ESC 1:25



P7=P10=P19=P22

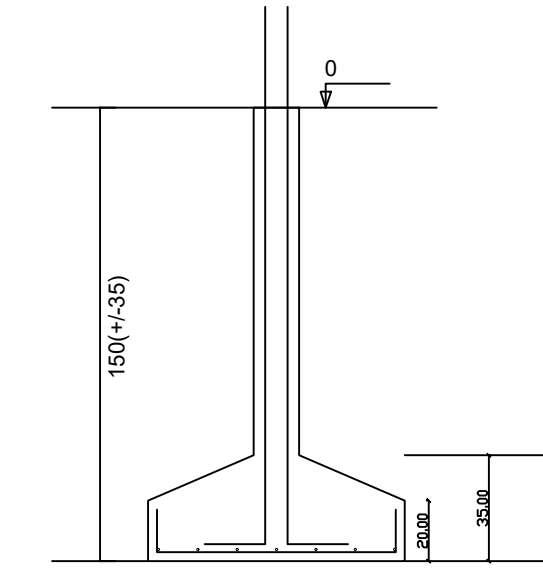


S7=S10=S19=S22
PLANTA
ESC 1:25

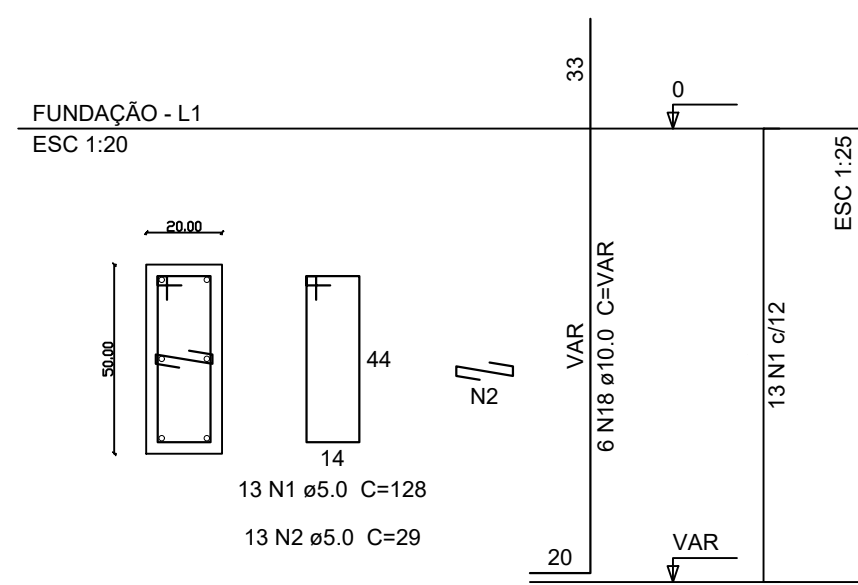


Solo com capacidade de suporte > 150.00 kN/m²
Solo compactado sobre a sapata
peso específico > 16.00 kN/m³

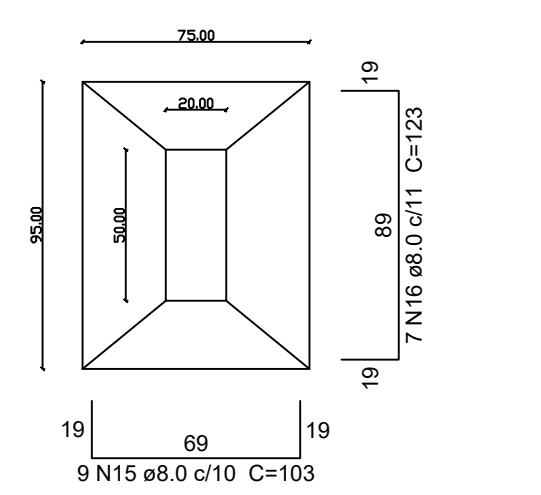
CORTE
ESC 1:25



P20

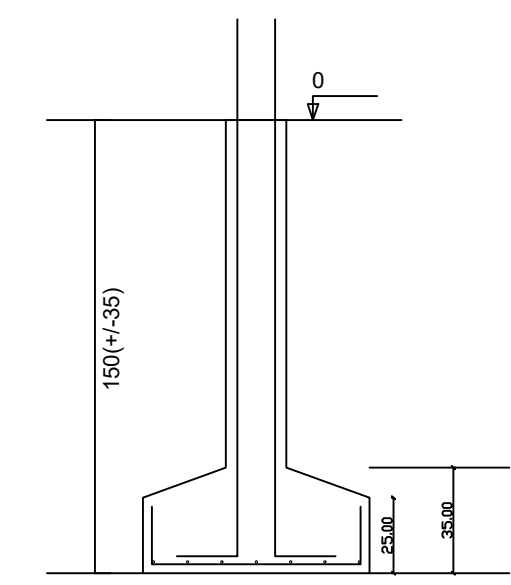


S20
PLANTA
ESC 1:25

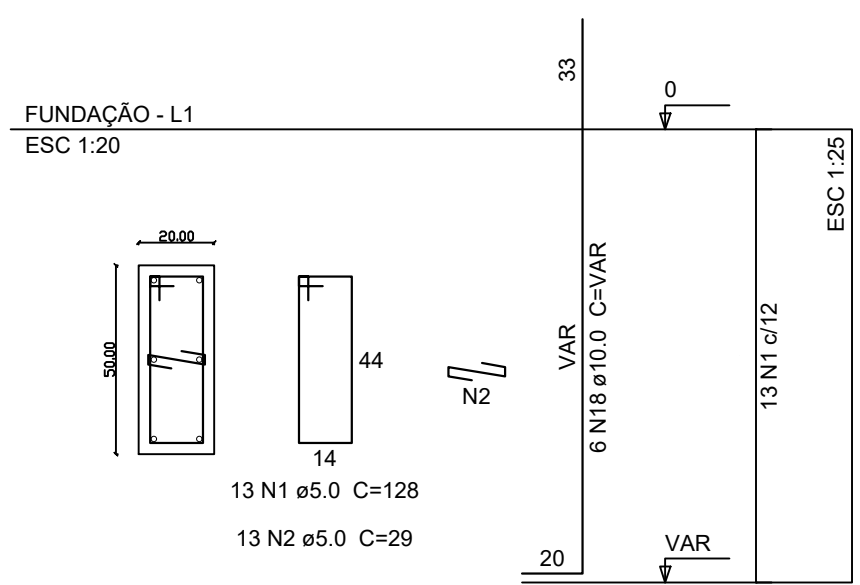


Solo com capacidade de suporte > 150.00 kN/m²
Solo compactado sobre a sapata
peso específico > 16.00 kN/m³

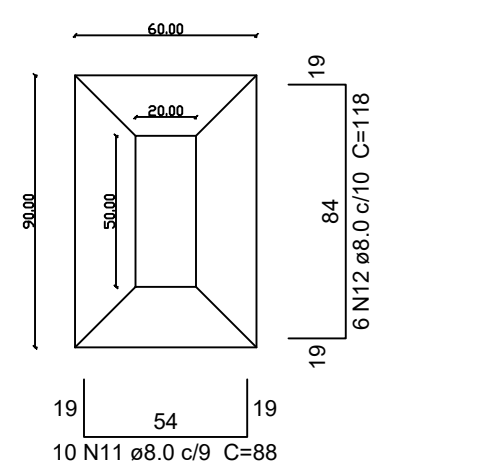
CORTE
ESC 1:25



P5

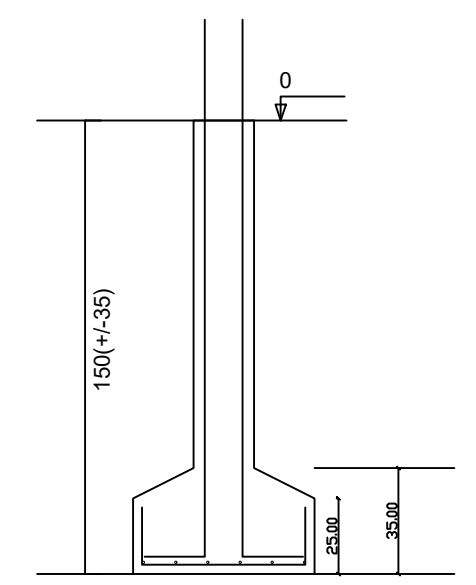


S5
PLANTA
ESC 1:25



Solo com capacidade de suporte > 150.00 kN/m²
Solo compactado sobre a sapata
peso específico > 16.00 kN/m³

CORTE
ESC 1:25



PREFEITURA MUNICIPAL DE GOVERNADOR LINDENBERG

PROJETO DE AMPLIAÇÃO - CEIM ARCO-ÍRIS

ESTRUTURAL

CONTEÚDO DETALHAMENTO DAS SAPATAS	ÁREA TOTAL 400 m ²	ESCALA indicada
ASSUNTO PROJETO ESTRUTURAL DE AMPLIAÇÃO CEIM ARCO-ÍRIS	ENDEREÇO RUA PROJETADA, NOVA BRASÍLIA, GOVERNADOR LINDENBERG - ES	CONSELHO 06 04/10

PREFEITO: LEONARDO PRANDO FINCO

RESP. TÉCNICO: MARLLONE DOS SANTOS PLOTGHER
CREA-ES 0048566/D

PREFEITURA MUNICIPAL DE GOVERNADOR LINDENBERG
CNPJ: 04.237.786/0001-54
(27) 3604-1010