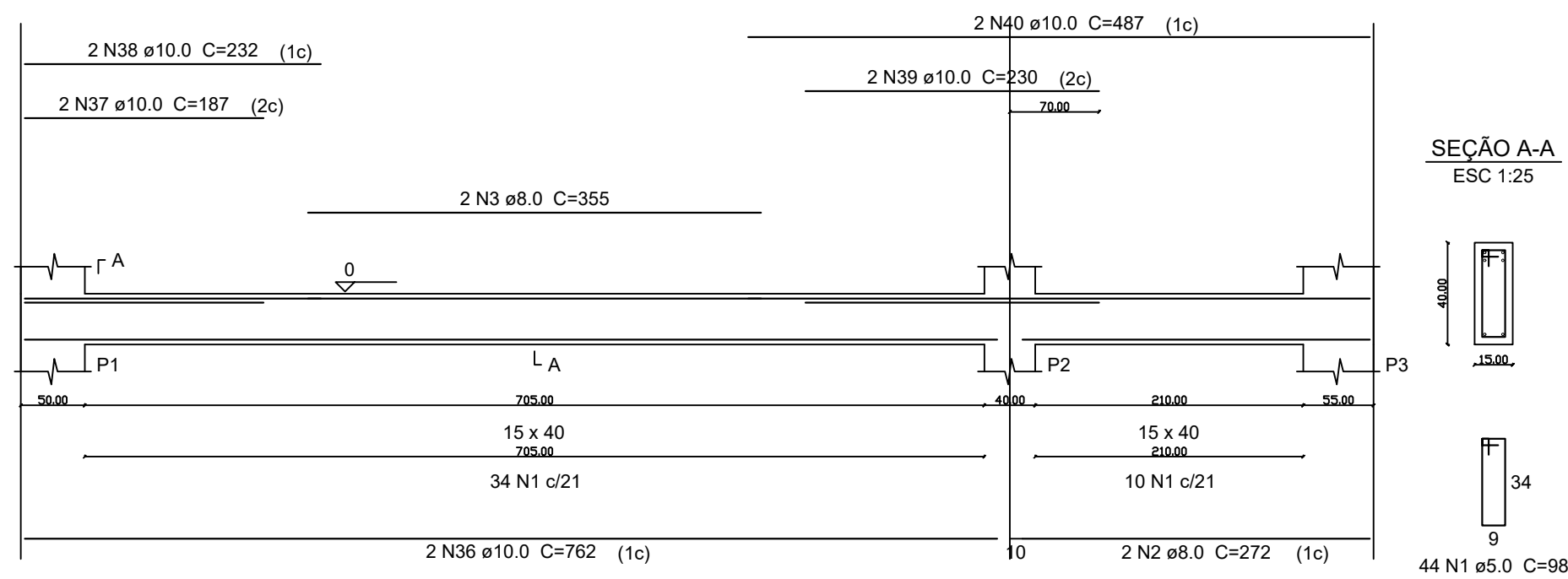
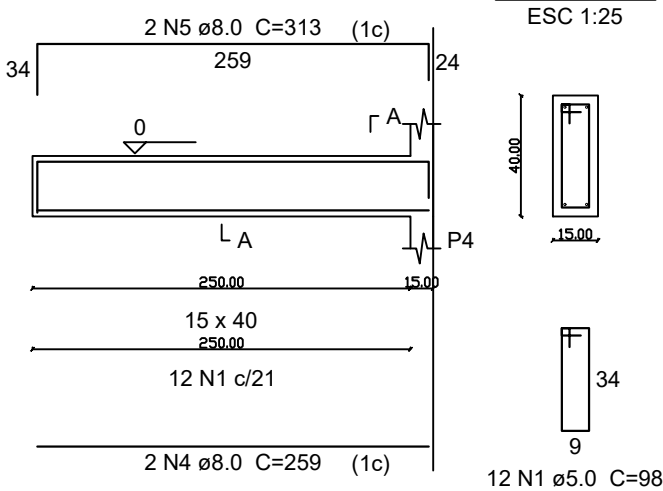


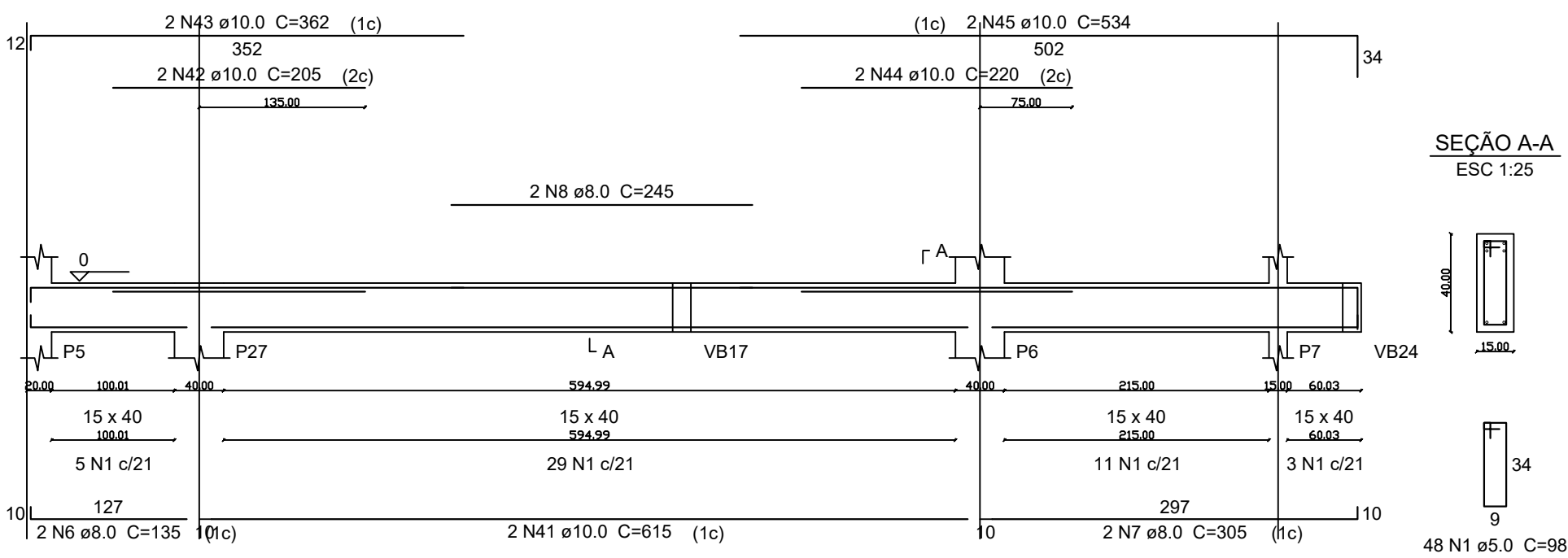
VB1
ESC 1:50



VB2
ESC 1:50



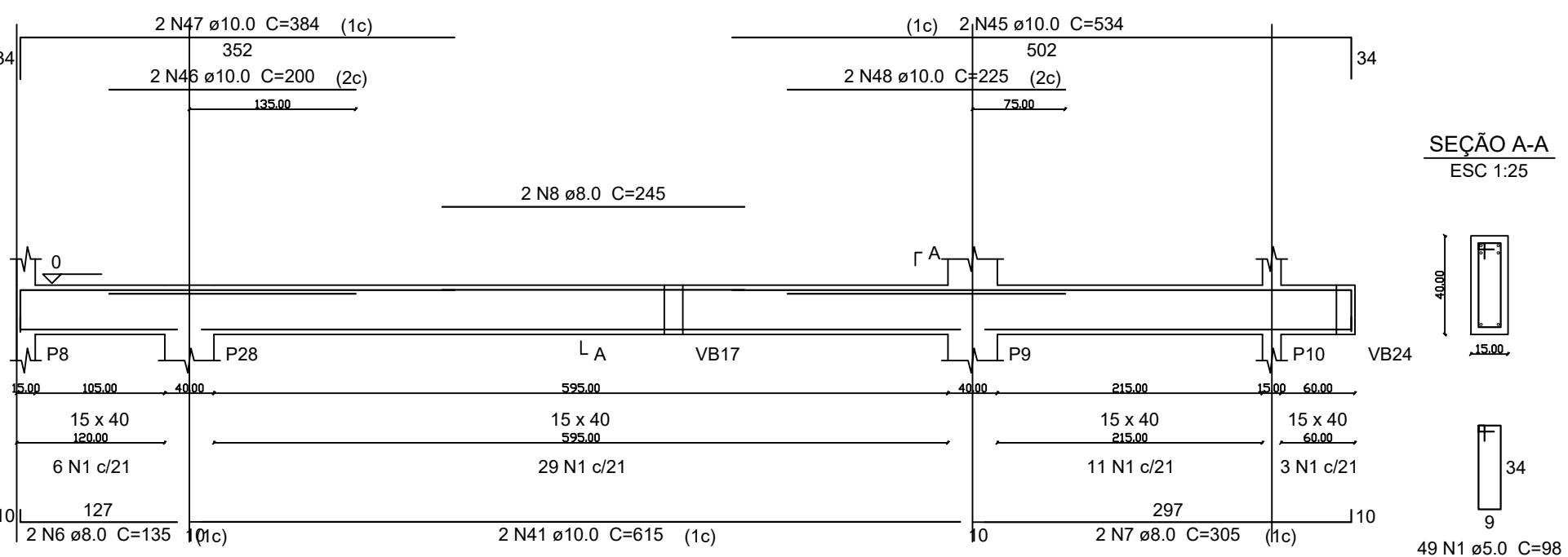
VB3
ESC 1:50



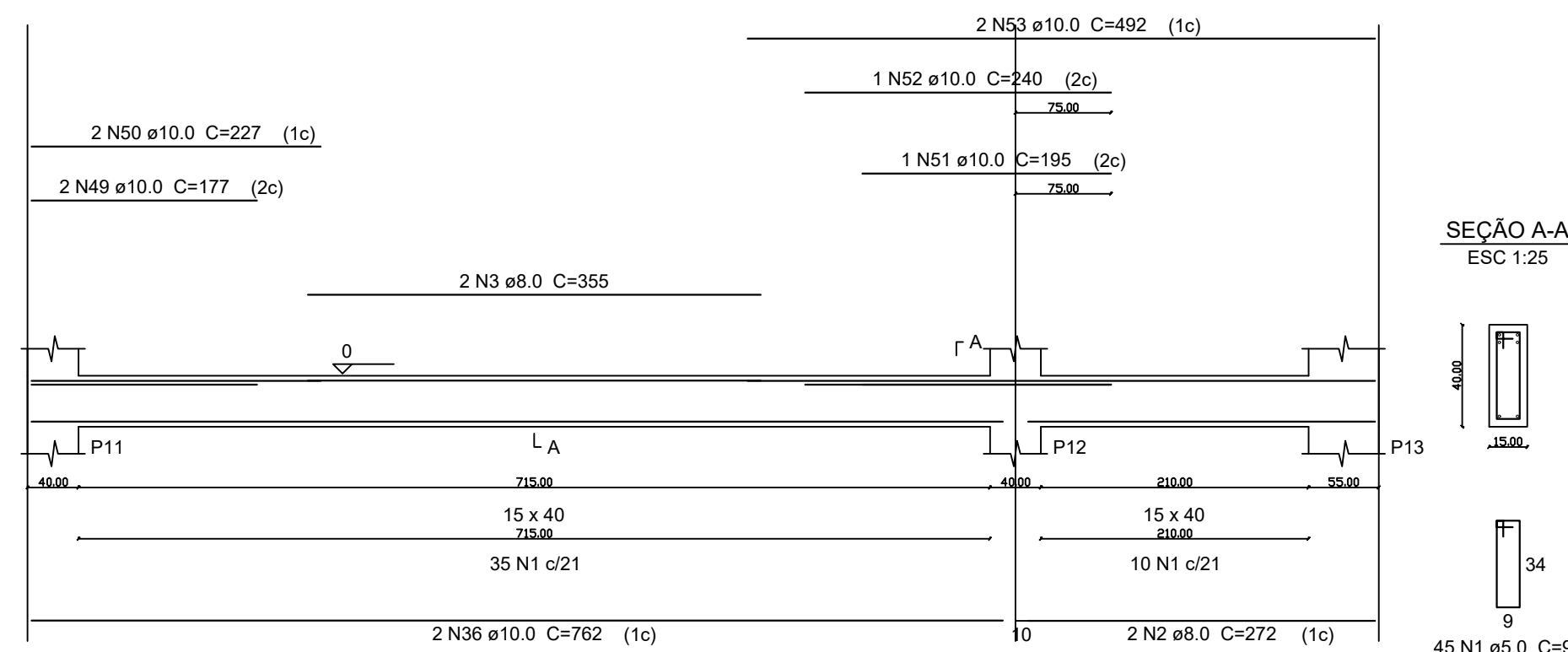
Relação do aço

ACO	N	DIAM	Q	UNIT (cm)	C.TOTAL (cm)
CA60	1	5.0	834	98	81732
CA50	2	8.0	8	272	2176
	3	8.0	8	355	2840
	4	8.0	4	259	1036
	5	8.0	4	313	1252
	6	8.0	4	135	540
	7	8.0	4	305	1220
	8	8.0	4	245	980
	9	8.0	2	293	586
	10	8.0	4	1095	4380
	11	8.0	4	243	972
	12	8.0	4	288	1152
	13	8.0	8	574	4522
	14	8.0	4	582	2328
	15	8.0	4	811	3244
	16	8.0	4	572	2288
	17	8.0	4	283	1132
	18	8.0	12	306	3672
	19	8.0	12	350	4200
	20	8.0	1	273	273
	21	8.0	4	869	3476
	22	8.0	2	547	1094
	23	8.0	1	88	88
	24	8.0	2	153	306
	25	8.0	2	164	328
	26	8.0	2	258	516
	27	8.0	2	280	560
	28	8.0	2	89	178
	29	8.0	4	154	616
	30	8.0	2	507	1014
	31	8.0	2	597	1194
	32	8.0	4	305	1220
	33	8.0	6	265	1590
	34	8.0	2	567	1134
	35	8.0	2	260	520
	36	10.0	8	762	6096
	37	10.0	4	187	748
	38	10.0	4	232	928
	39	10.0	4	230	920
	40	10.0	4	487	1948
	41	10.0	4	615	2460
	42	10.0	2	205	410
	43	10.0	2	362	724
	44	10.0	2	220	440
	45	10.0	4	554	2136
	46	10.0	2	200	400
	47	10.0	2	384	768
	48	10.0	4	225	900
	49	10.0	10	177	1770
	50	10.0	4	227	908
	51	10.0	5	195	975
	52	10.0	3	240	720
	53	10.0	4	492	1968
	54	10.0	2	215	430
	55	10.0	4	394	1576
	56	10.0	4	527	2108
	57	10.0	2	499	998
	58	10.0	1	517	517
	59	10.0	2	657	1314
	60	10.0	4	186	744
	61	10.0	6	172	1032
	62	10.0	2	544	1088

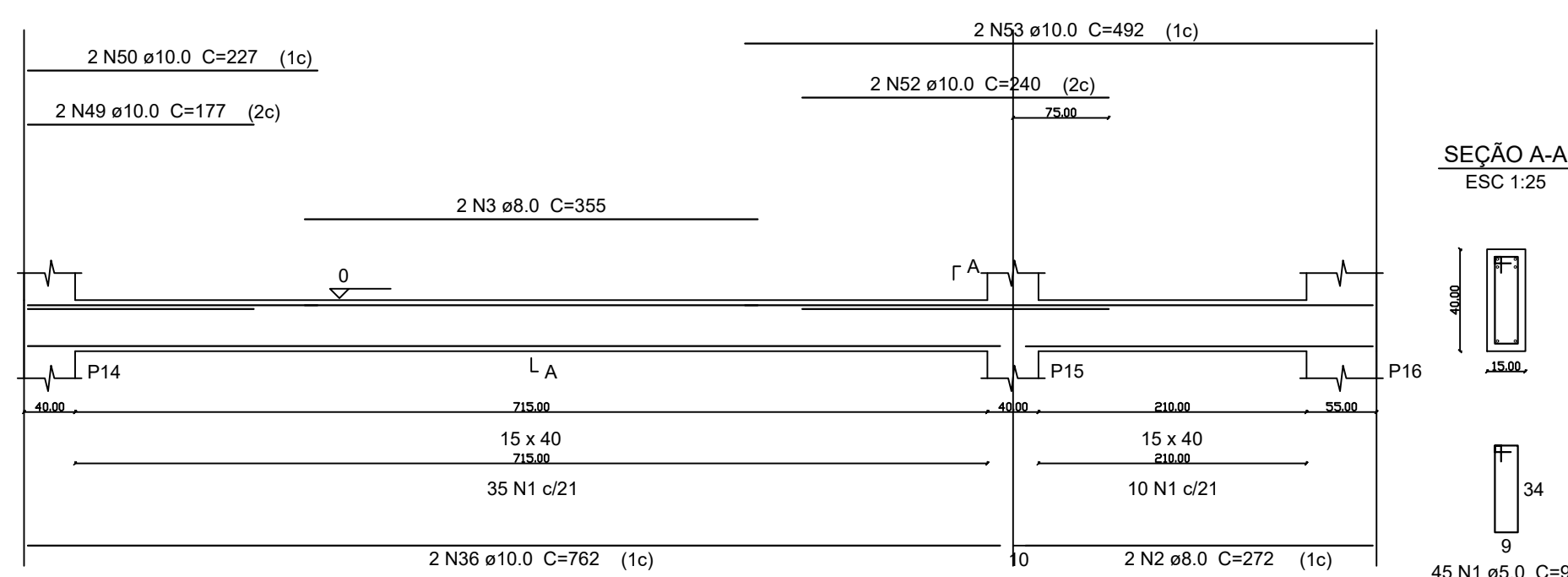
VB4
ESC 1:50



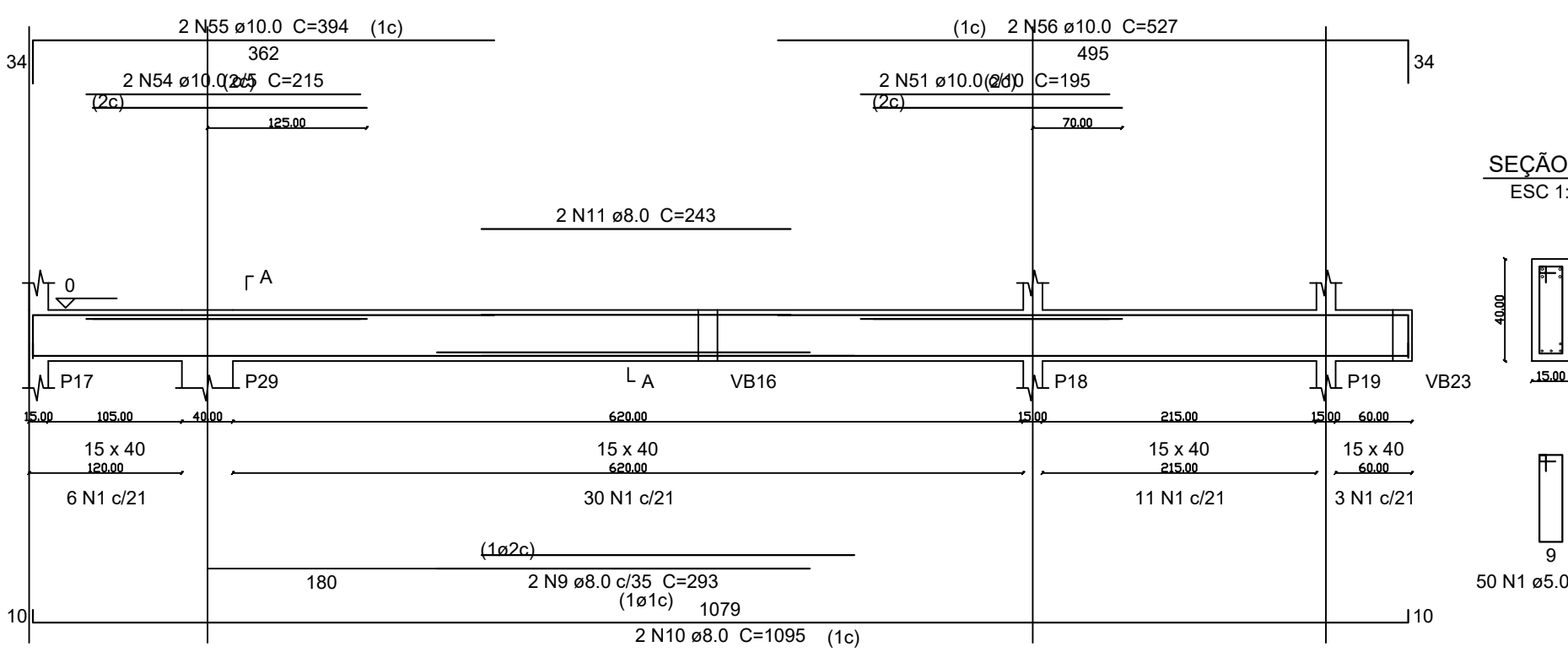
VB5
ESC 1:50



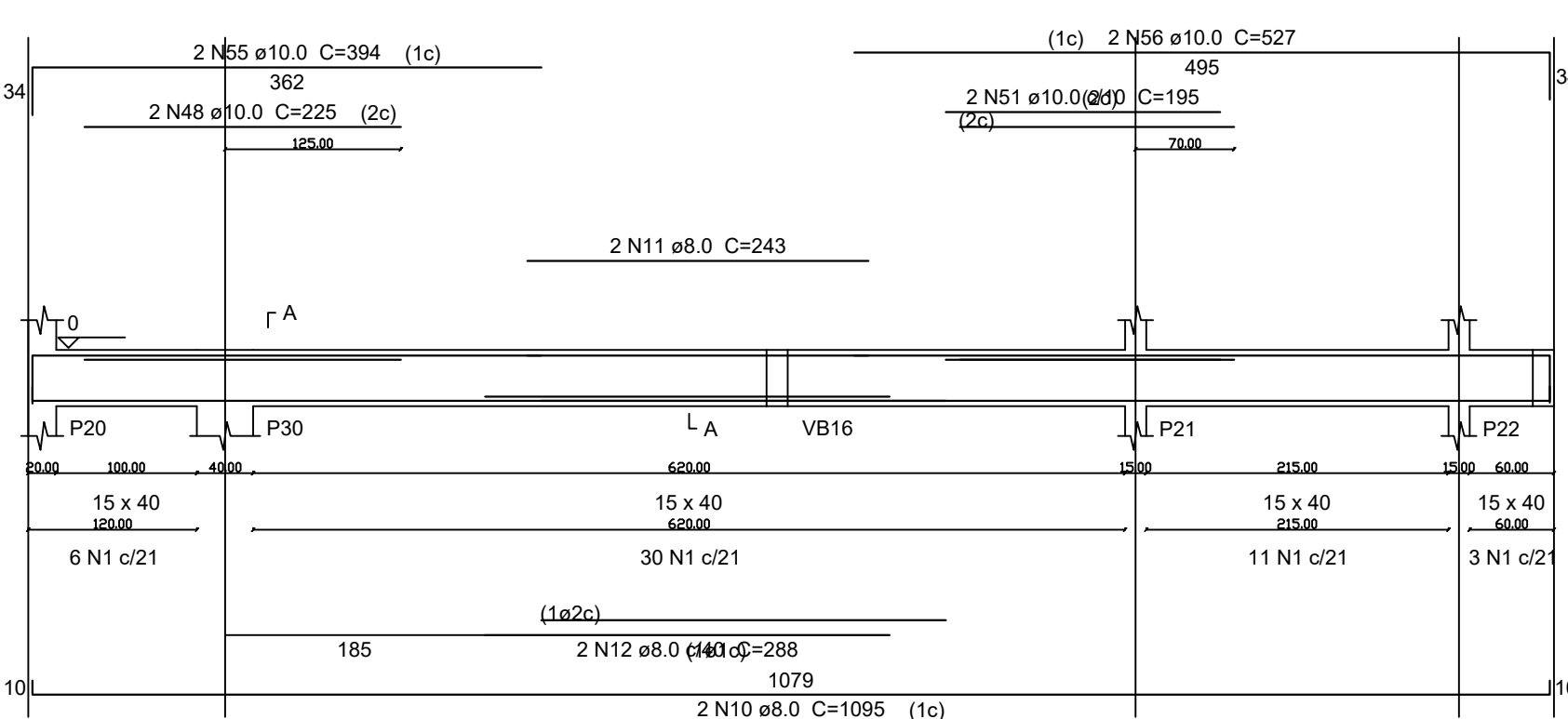
VB6
ESC 1:50



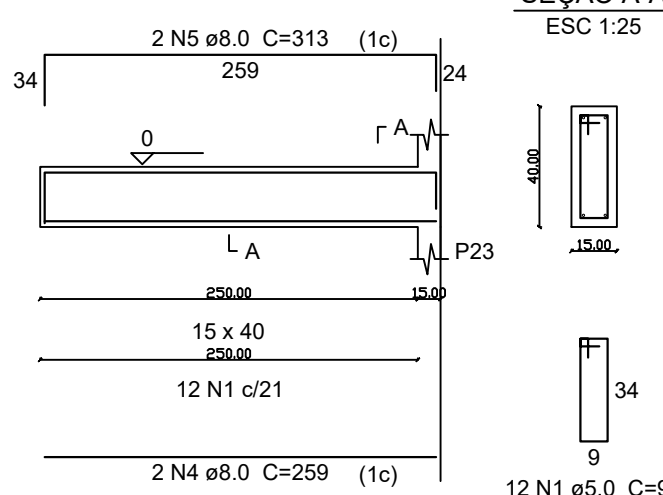
VB7
ESC 1:50



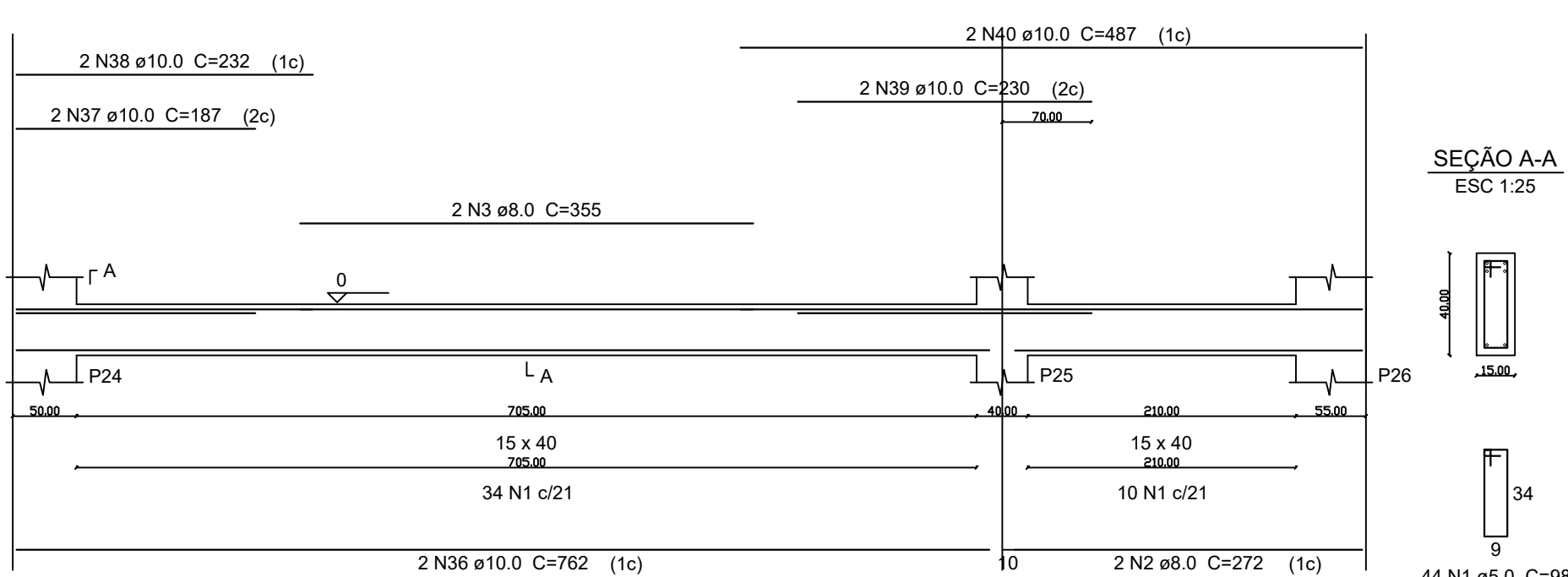
VB8
ESC 1:50



VB9
ESC 1:50



VB10
ESC 1:50



Resumo do aço

ACO	DIAM	C.TOTAL (m)	PESO + 10 % (kg)
CA50	8.0	527	228.7
	10.0	350.3	237.5
CA60	5.0	817.4	138.6
PESO TOTAL			
CA50	466.3		
CA60	138.6		

Vol. de concreto total (C-30) = 11.37 m³
Área de forma total = 180.07 m²

PREFEITURA MUNICIPAL DE GOVERNADOR LINDENBERG

TÍTULO:
PROJETO DE AMPLIAÇÃO - CEIM ARCO-ÍRIS

TIPO I:
ESTRUTURAL

CONTEÚDO I: DETALHAMENTO VIGAS BALDRAMES	ÁREA TOTAL I: 400 m²	ESCALA I: indicada
ASSUNTO I: PROJETO ESTRUTURAL DE AMPLIAÇÃO CEIM ARCO-ÍRIS	ENDEREÇO I: RUA PROJETADA, NOVA BRASÍLIA, GOVERNADOR LINDENBERG - ES	CONSELHO I: 06 05 10

PREFEITO: LEONARDO PRANDO FINCO	PREFEITURA MUNICIPAL DE GOVERNADOR LINDENBERG CNPJ: 04.217.786/0001-54 (27) 3604-1010
RESP. TÉCNICO: MARLLONE DOS SANTOS PLOTGHER CREA-ES 0048566D	