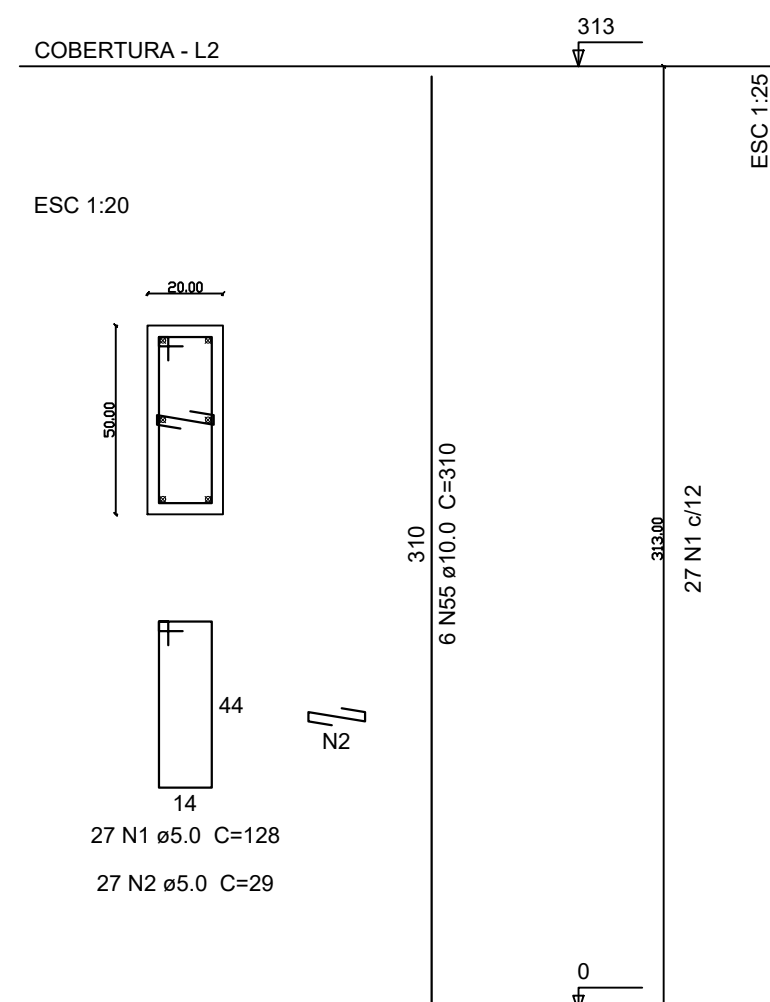
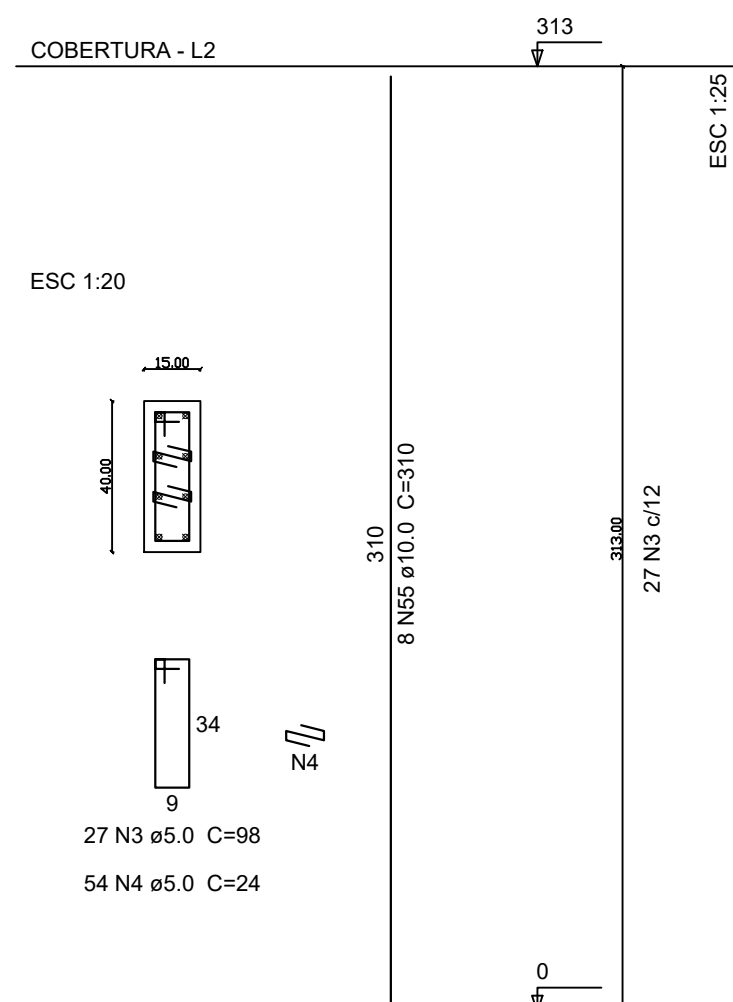


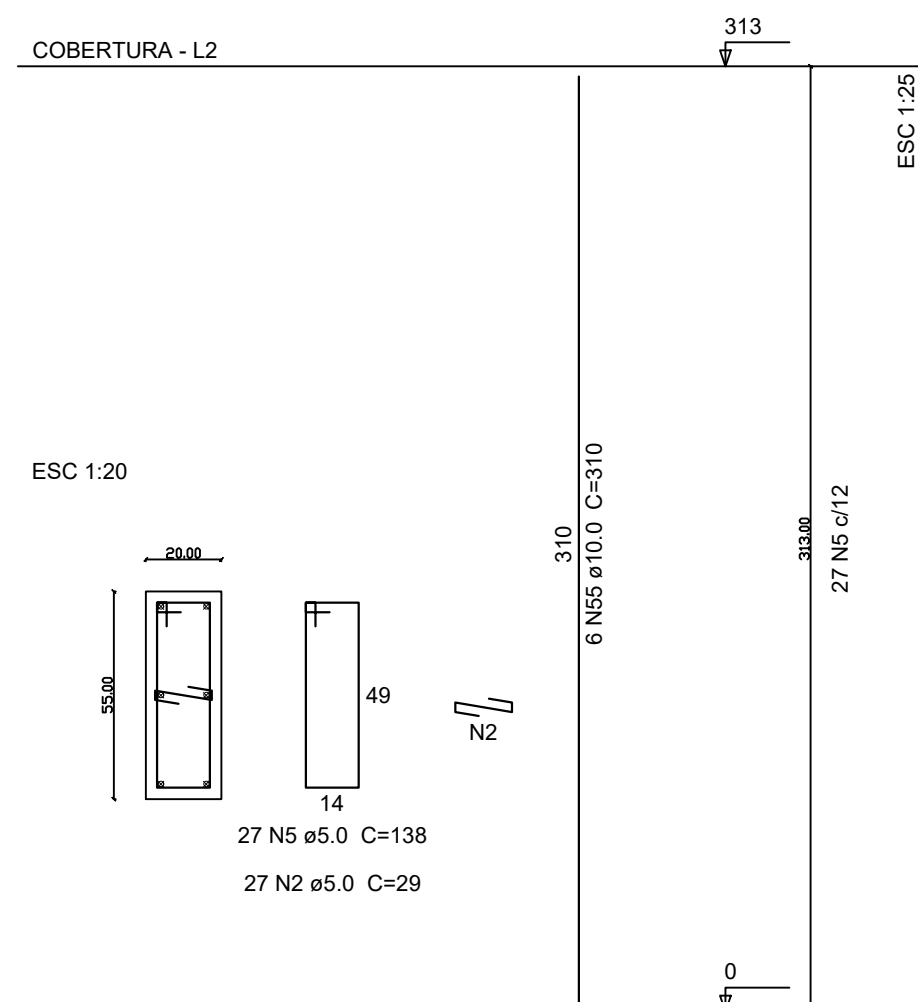
P1=P5=P20=P24



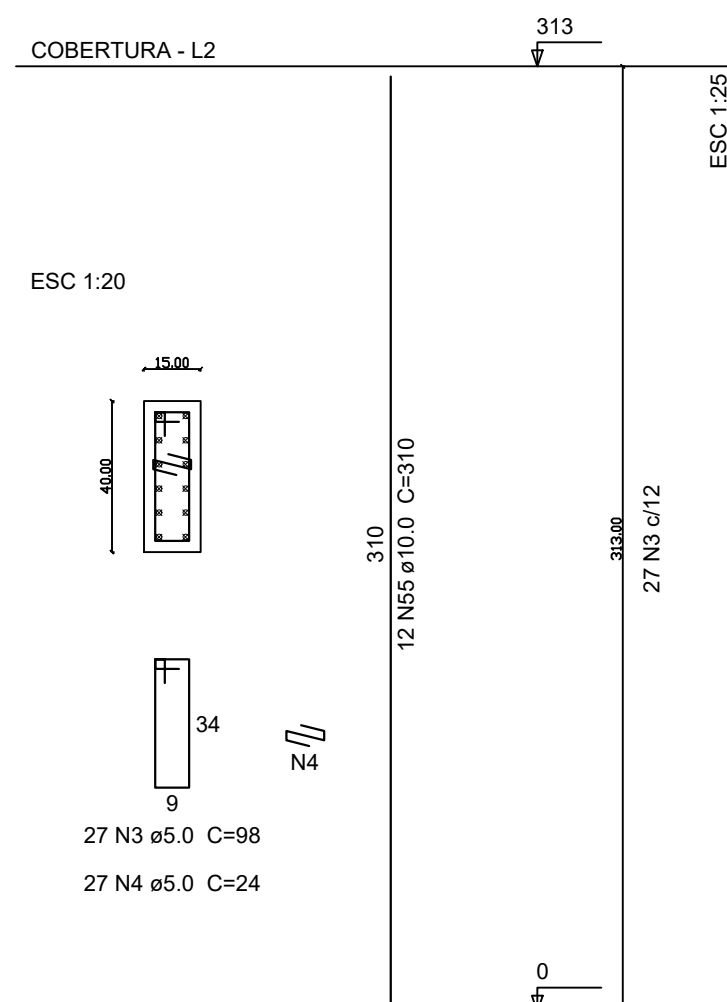
P2=P12=P18=P21



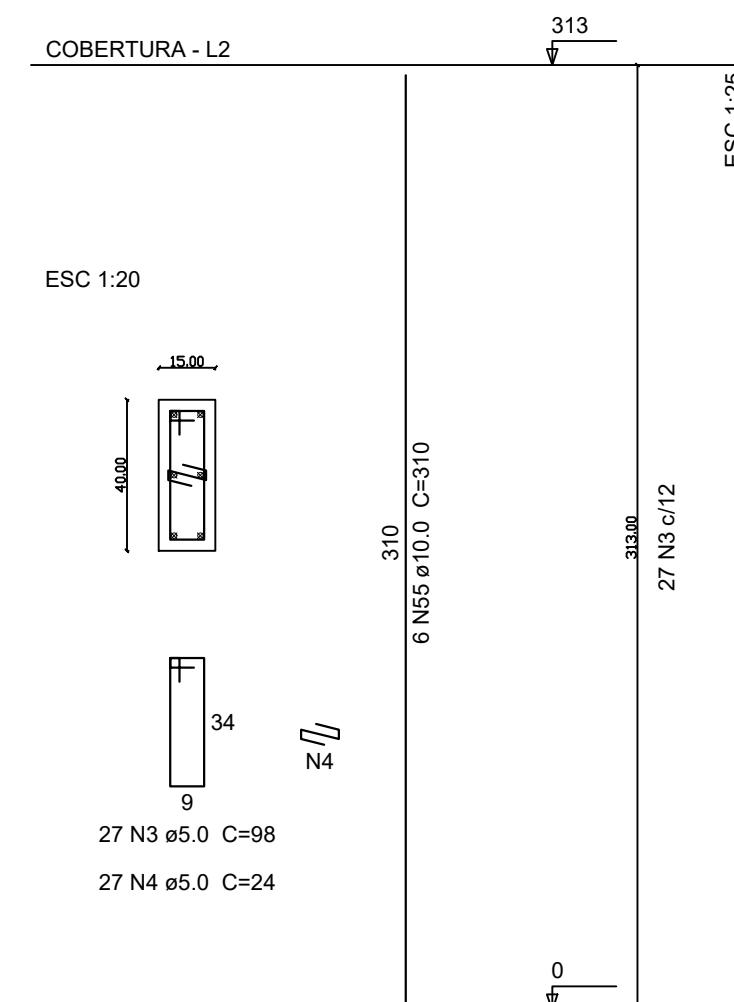
P3=P13=P16=P26



P4=P23



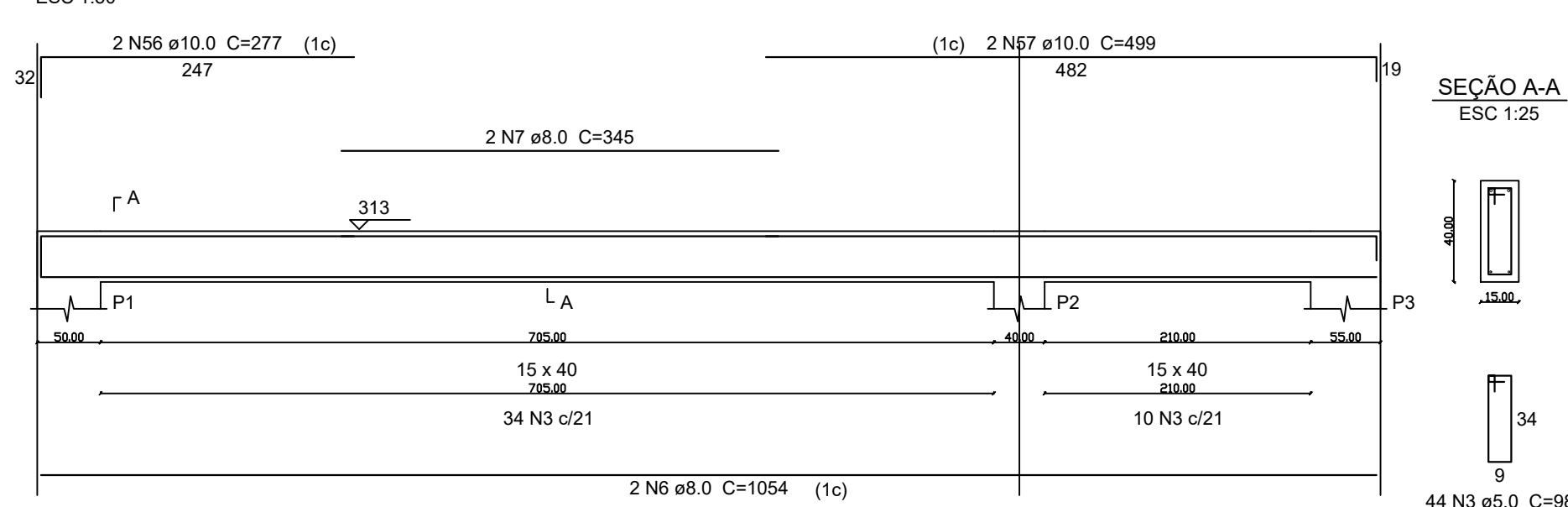
P6=P7=P8=P9=P10=P11=P14=P15=P17=P19=P22=P25



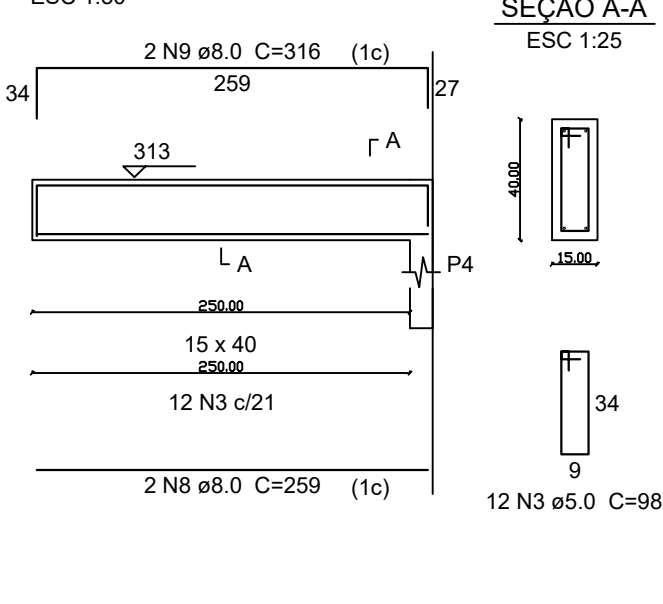
Relação do aço

AÇO	N	DIAM	Q	UNIT (cm)	C.TOTAL (cm)
CA60	1	5.0	108	128	13824
	2	5.0	216	29	6264
	3	5.0	1304	98	127792
	4	5.0	594	24	14256
	5	5.0	108	138	14904
CA50	6	8.0	8	1054	8432
	7	8.0	2	345	690
	8	8.0	4	259	1036
	9	8.0	4	316	1264
	10	8.0	8	1087	8696
	11	8.0	2	259	518
	12	8.0	4	559	2236
	13	8.0	4	335	1340
	14	8.0	2	177	354
	15	8.0	2	418	836
	16	8.0	6	279	1674
	17	8.0	2	504	1008
	18	8.0	2	524	1048
	19	8.0	6	315	1890
	20	8.0	2	192	384
	21	8.0	2	532	1064
	22	8.0	2	430	860
	23	8.0	2	517	1034
	24	8.0	2	358	716
	25	8.0	1	320	320
	26	8.0	2	365	730
	27	8.0	2	644	1288
	28	8.0	2	698	1396
	29	8.0	4	366	1464
	30	8.0	4	410	1640
	31	8.0	4	811	3244
	32	8.0	4	572	2288
	33	8.0	2	129	258
	34	8.0	4	209	836
	35	8.0	2	489	978
	36	8.0	6	273	1638
	37	8.0	6	574	3444
	38	8.0	2	618	1236
	39	8.0	2	976	1952
	40	8.0	2	584	1168
	41	8.0	2	277	554
	42	8.0	2	627	1254
	43	8.0	2	157	314
	44	8.0	2	268	536
	45	8.0	2	869	1738
	46	8.0	4	152	608
	47	8.0	2	587	1174
	48	8.0	2	90	180
	49	8.0	4	150	600
	50	8.0	4	290	1160
	51	8.0	2	567	1134
	52	8.0	4	265	1060
	53	8.0	4	306	1224
	54	8.0	4	350	1400
	55	10.0	176	310	54560
	56	10.0	2	277	554
	57	10.0	4	499	1996
	58	10.0	1	156	156
	59	10.0	2	256	512
	60	10.0	1	175	175
	61	10.0	2	199	398
	62	10.0	4	198	792
	63	10.0	2	544	1088
	64	10.0	2	200	400

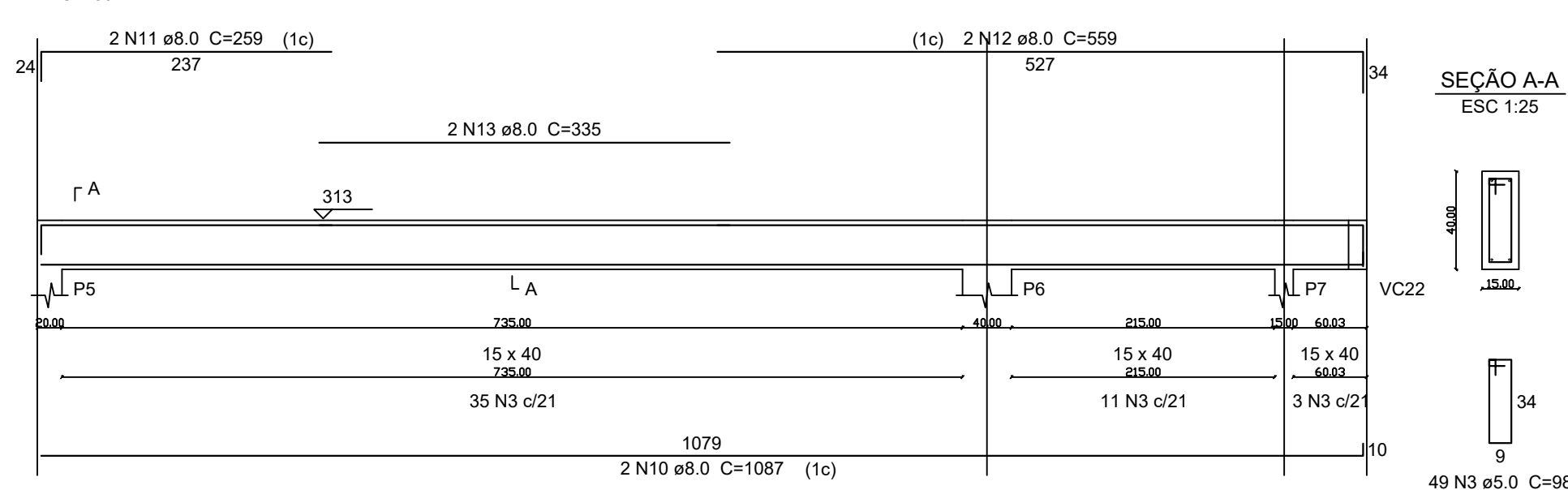
VC1



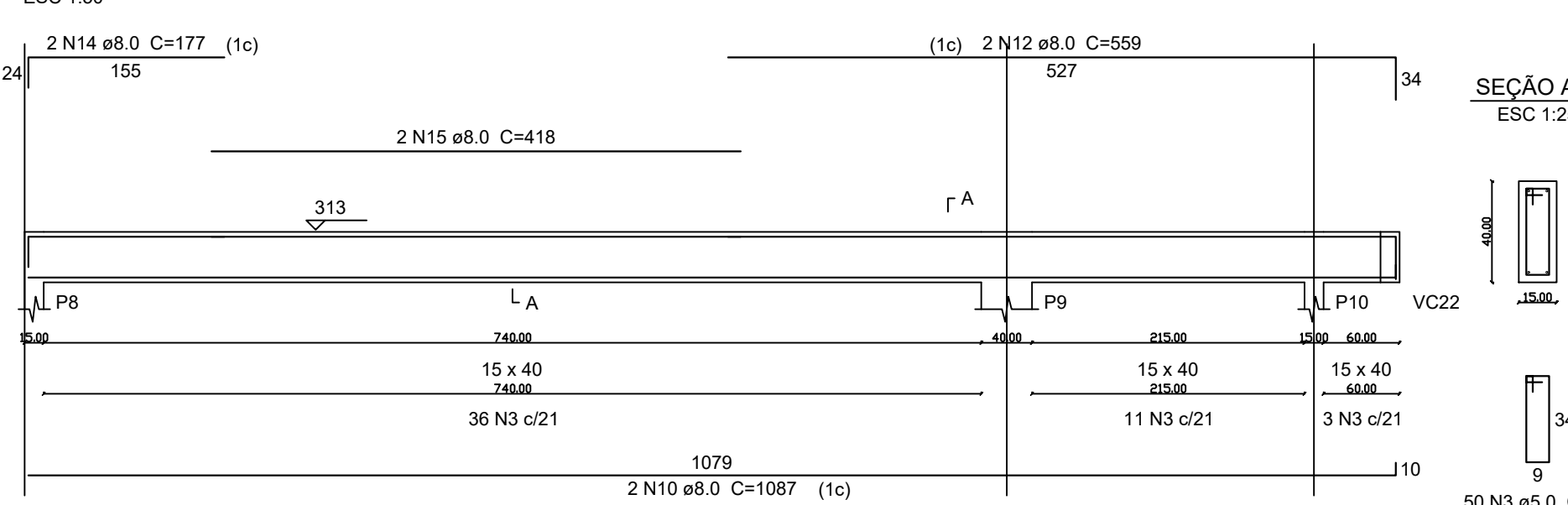
VC2



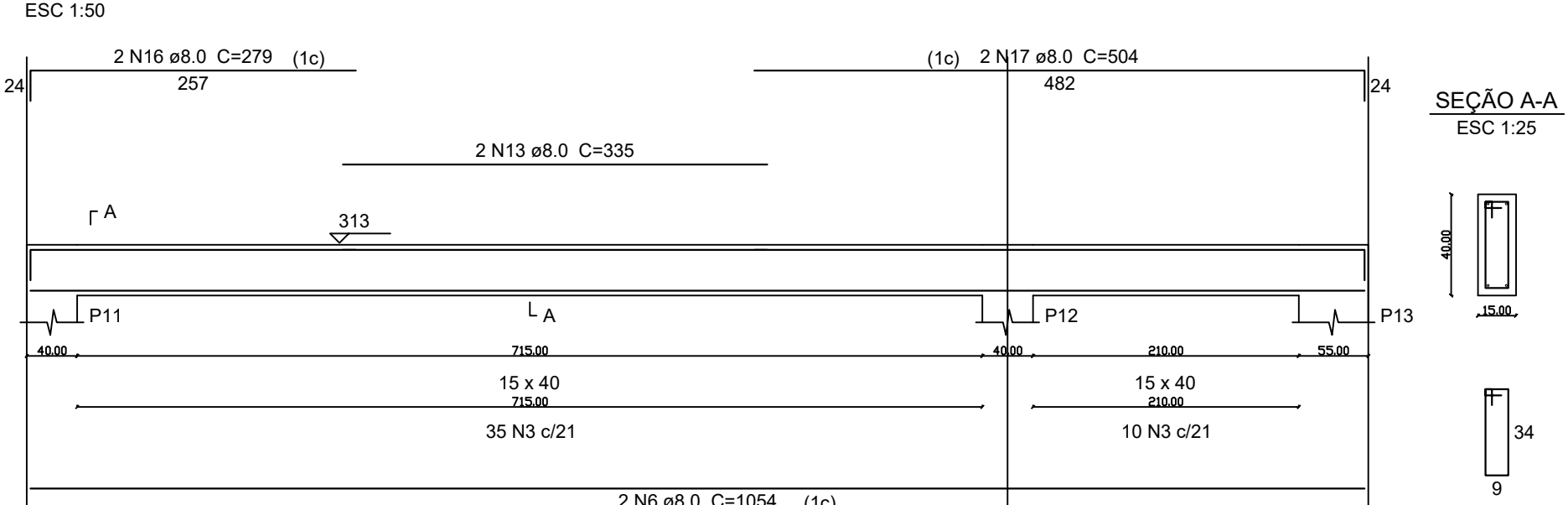
VC3



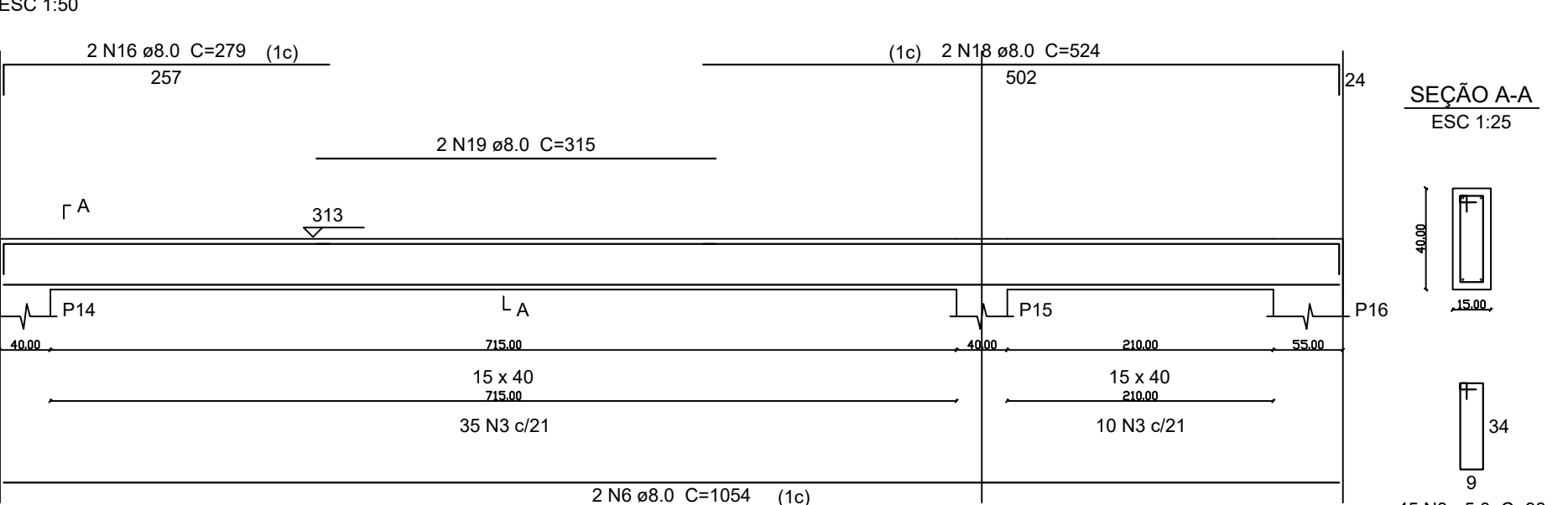
VC4



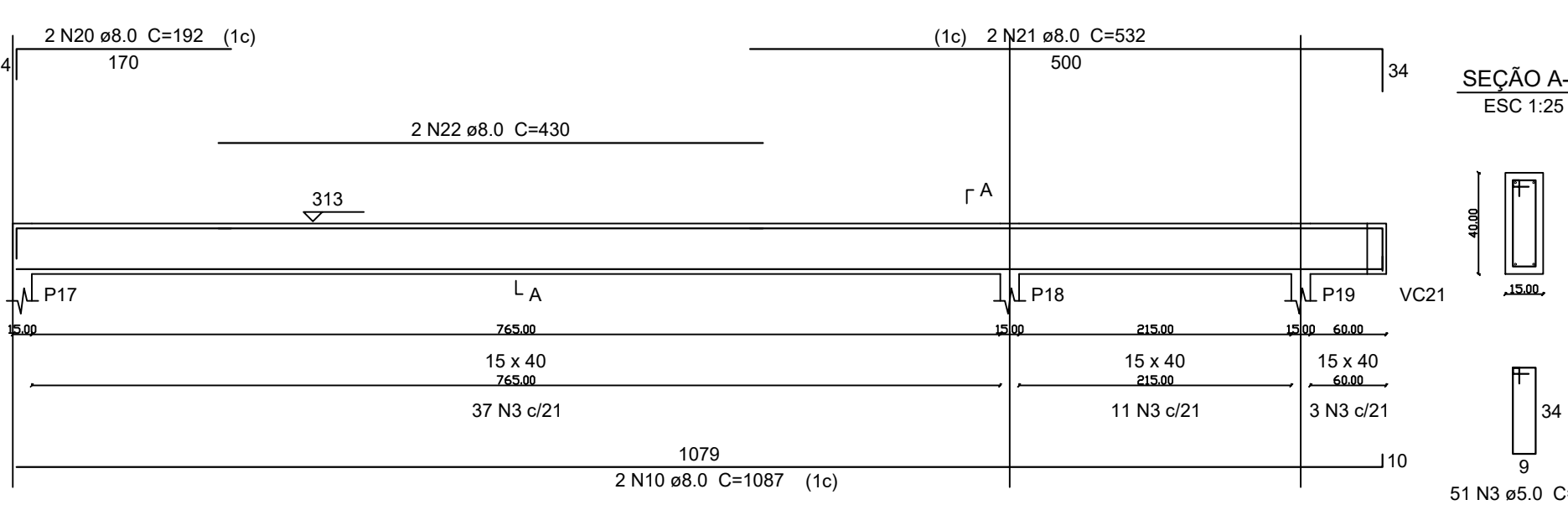
VC5



VC6



VC7



Resumo do aço

AÇO	DIAM	C.TOTAL (m)	PESO + 10 % (kg)
CA50	8.0	719	312.1
CA60	5.0	1770.4	411.2
CA60	8.0	1770.4	300.2

Vol. de concreto total (C-30) = 17.16 m³
Área de forma total = 274.9 m²

PREFEITURA MUNICIPAL DE GOVERNADOR LINDENBERG

PROJETO DE AMPLIAÇÃO - CEIM ARCO-ÍRIS

ESTRUTURAL

CONTEÚDO: NOVEMBRO DE 2024	ÁREA TOTAL: 400 m²	ESCALA: indicada
DETALHAMENTO PILARES E VIGAS DE COBERTURA	ENDEREÇO: RUA PROJETADA, NOVA BRASÍLIA, GOVERNADOR LINDENBERG - ES	CONJUNTO: 06
ASSUNTO: PROJETO ESTRUTURAL DE AMPLIAÇÃO CEIM ARCO-ÍRIS		08/10

PREFEITO: LEONARDO PRANDO FINCO	PREFEITURA MUNICIPAL DE GOVERNADOR LINDENBERG
RESP. TÉCNICO: MARLLONE DOS SANTOS PLOTTEGHER CREA-ES 0048556/D	CNPJ: 04.237.786/0001-54 (27) 3604-1010