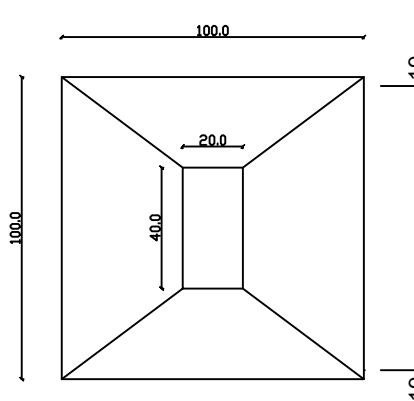
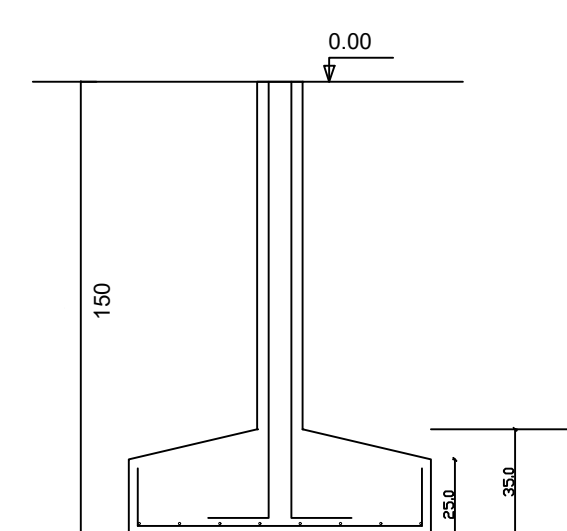


S1=S2=S3=S4=S5=S6=S7=S8=S9=S10=S11=S12=S13=S14=S15=S16=
S17=S18=S19=S20=S21=S22=S23=S24=S25=S26=S27=S28=S29=S30=S31

PLANTA
ESC 1:25

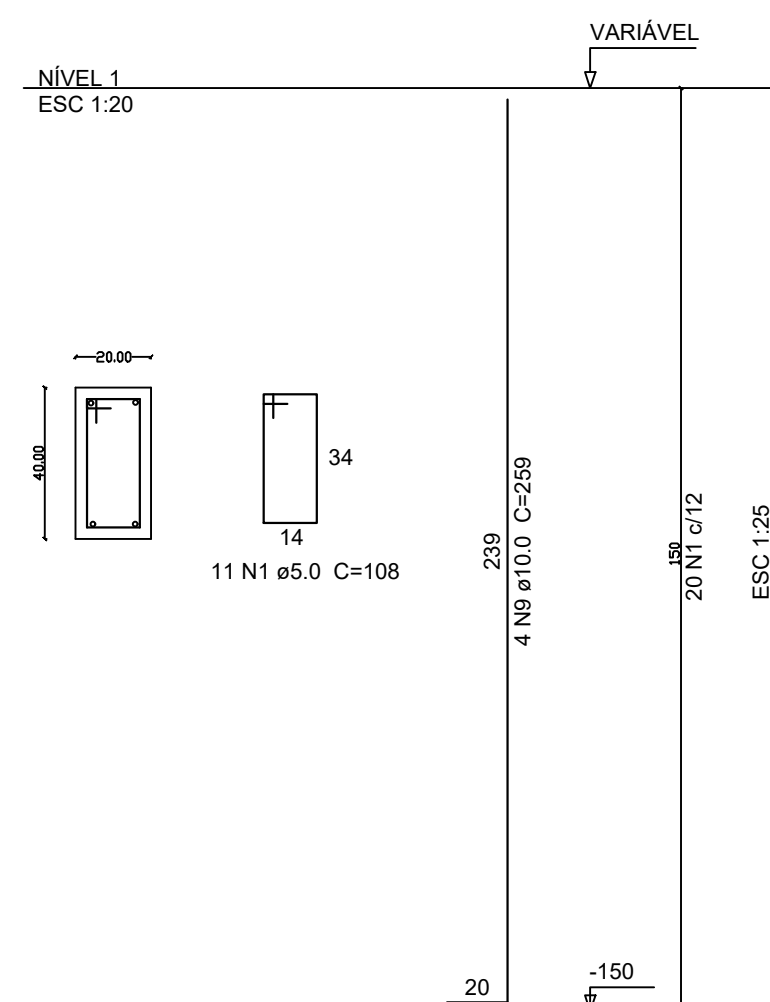


CORTE
ESC 1:25



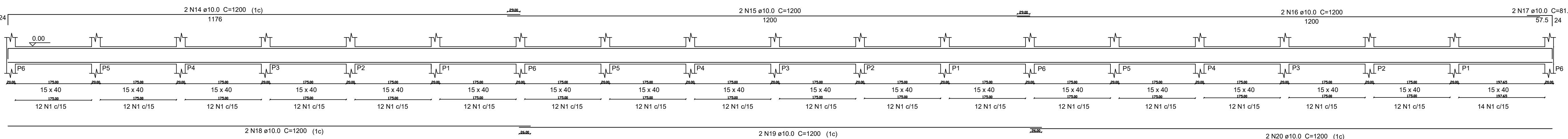
Solo com capacidade de suporte > 150.00 kN/m²
Solo compactado sobre a sapata
peso específico > 16.00 kN/m³

P3

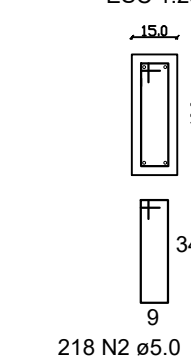


VB3

ESC 1:50

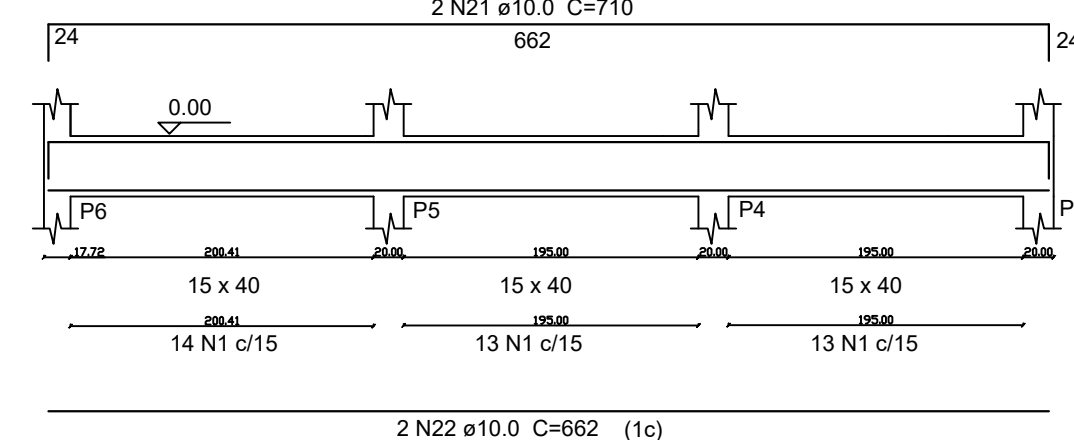


SEÇÃO A-A
ESC 1:25

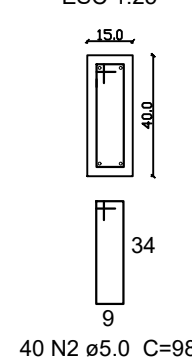


VB4

ESC 1:50

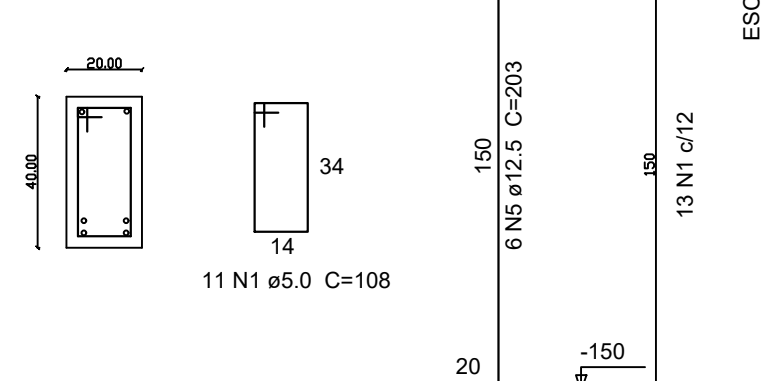


SEÇÃO A-A
ESC 1:25



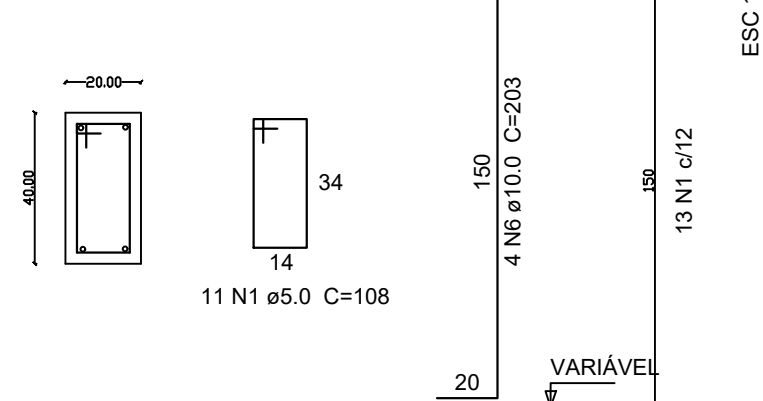
P9=P10=P11=P12=P13=P14=P15=P16=P17=P18=P19=
P20=P21=P22=P23=P24=P25=P26=P27=P28=P29=P30=P31

FUNDAÇÃO - L1
ESC 1:20



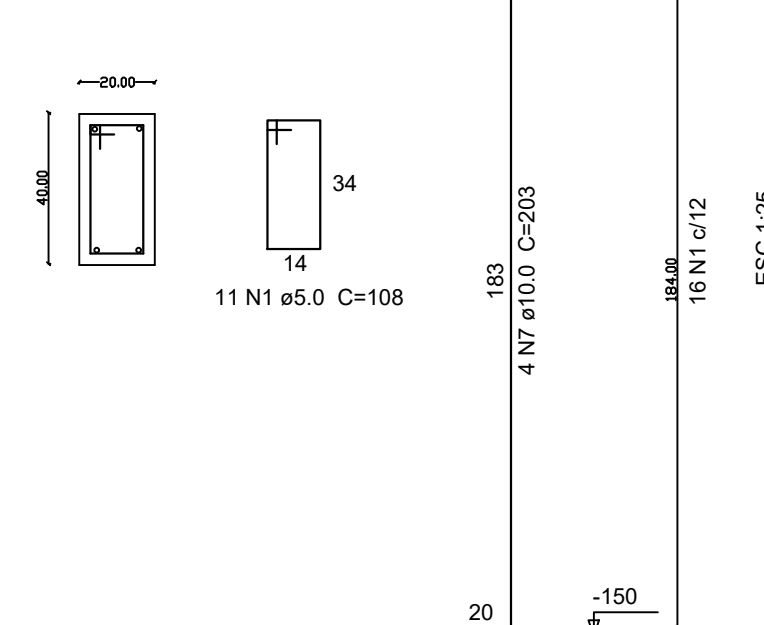
P4=P5=P6=P7=P8

FUNDAÇÃO - L1
ESC 1:20



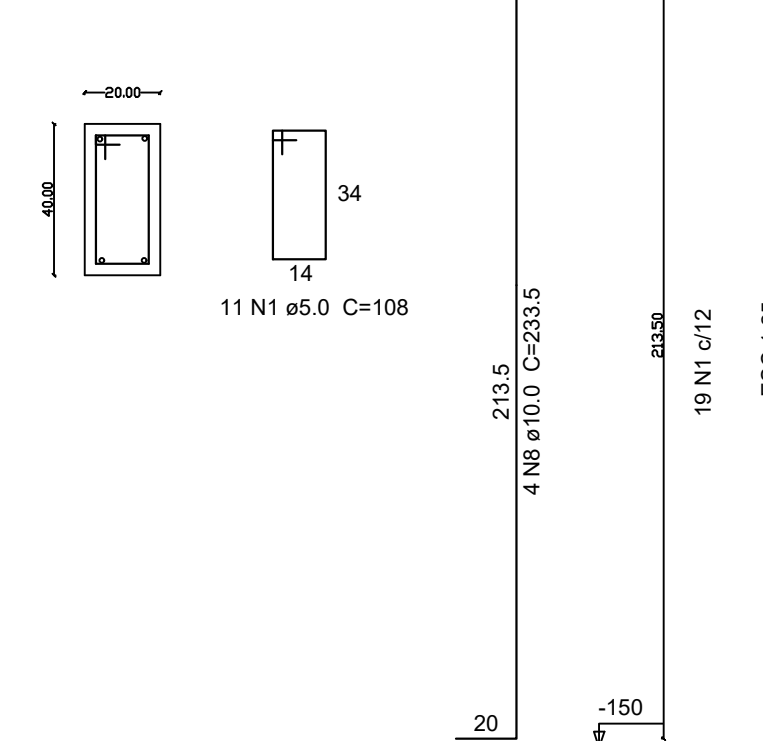
P1

NÍVEL 1
ESC 1:20



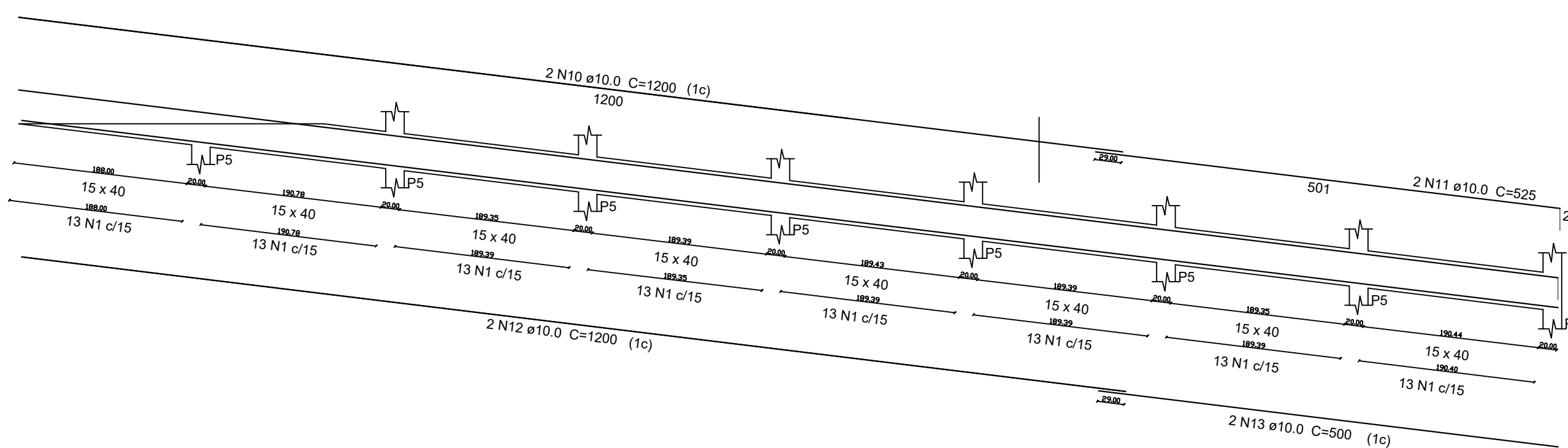
P2

NÍVEL 1
ESC 1:20

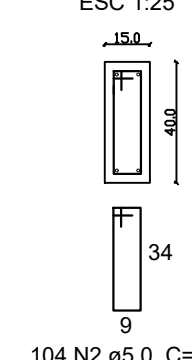


VB1

ESC 1:50

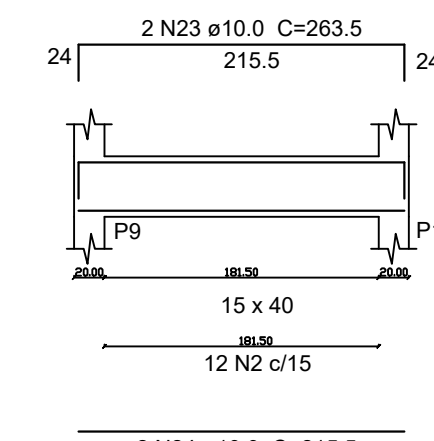


SEÇÃO A-A
ESC 1:25

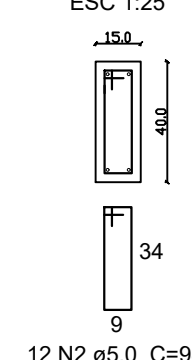


VB2

ESC 1:50



SEÇÃO A-A
ESC 1:25



RELAÇÃO DE AÇO - FUNDAÇÃO

AÇO	N	DIAM	Q	UNIT (cm)	C.TOTAL (m)
CA60	1	5.0	419	108	452.52
	2	5.0	362	98	354.76
CA50	3	8.0	341	132	450.12
	4	8.0	341	132	450.12
	5	12.5	138	203	280.14
	6	10.0	20	203	40.60
	7	10.0	4	203	8.12
	8	10.0	4	233.5	9.34
	9	10.0	4	259	10.36
	10	10.0	2	1200	24
	11	10.0	2	525	10.5
	12	10.0	2	1200	24
	13	10.0	2	500	10
	14	10.0	2	1200	24
	15	10.0	2	1200	24
	16	10.0	2	1200	24
	17	10.0	2	81.5	1.63
	18	10.0	2	1200	24
	19	10.0	2	1200	24
	20	10.0	2	1200	24
	21	10.0	2	710	14.20
	22	10.0	2	662	13.24

RESUMO DE AÇO

AÇO	DIAM	C.TOTAL (m)	PESO (kg)
CA50	8.0	900.24	355.59
	10.0	309.99	191.26
	12.5	280.14	269.77
CA60	5.0	807.28	124.32
PESO TOTAL			
CA50		940.94	
CA60		124.32	

Vol. de concreto total (C-30) = 15.02 m³
Área de forma total = 143.67 m²

PREFEITURA MUNICIPAL DE GOVERNADOR LINDENBERG

PROJETO DE MURO DE CONTENÇÃO

ESTRUTURAL

CONTEÚDO	ÁREA TOTAL	ESCALA
DETALHAMENTO DA FUNDAÇÃO		indicada
ASSUNTO	ENDEREÇO	CONJUNTO
PROJETO DE MURO DE CONTENÇÃO - CRECHE ARCO-IRIS	NOVA BRASÍLIA, GOVERNADOR LINDENBERG - ES	01 02 03

PREFEITO	RES. TÉCNICO	PREFEITURA MUNICIPAL DE GOVERNADOR LINDENBERG
LEONARDO PRANDO FINCO	MARLLONE DOS SANTOS PLOTGHER CREA-ES 004856/D	(27) 3744-5214